

Product datasheet for **TA308864**

CD44 Rabbit Polyclonal Antibody

Product data:

Product Type:	Primary Antibodies
Applications:	IF, IHC, WB
Recommended Dilution:	ICC/IF:1:100-1:1000; IHC:1:100-1:1000; WB:1:1000-1:20000
Reactivity:	Human
Host:	Rabbit
Isotype:	IgG
Clonality:	Polyclonal
Immunogen:	Recombinant protein fragment contain a sequence corresponding to a region within amino acids 1 and 258 of CD44
Formulation:	1XPBS, 20% Glycerol (pH7). 0.025% ProClin 300 was added as a preservative.
Concentration:	lot specific
Purification:	Purified by antigen-affinity chromatography.
Conjugation:	Unconjugated
Storage:	Store at -20°C as received.
Stability:	Stable for 12 months from date of receipt.
Predicted Protein Size:	53 kDa
Gene Name:	CD44 molecule (Indian blood group)
Database Link:	NP_001001392 Entrez Gene 960 Human P16070



[View online »](#)

Background:

The protein encoded by this gene is a cell-surface glycoprotein involved in cell-cell interactions, cell adhesion and migration. It is a receptor for hyaluronic acid (HA) and can also interact with other ligands, such as osteopontin, collagens, and matrix metalloproteinases (MMPs). This protein participates in a wide variety of cellular functions including lymphocyte activation, recirculation and homing, hematopoiesis, and tumor metastasis. Transcripts for this gene undergo complex alternative splicing that results in many functionally distinct isoforms, however, the full length nature of some of these variants has not been determined. Alternative splicing is the basis for the structural and functional diversity of this protein, and may be related to tumor metastasis. [provided by RefSeq]

Synonyms:

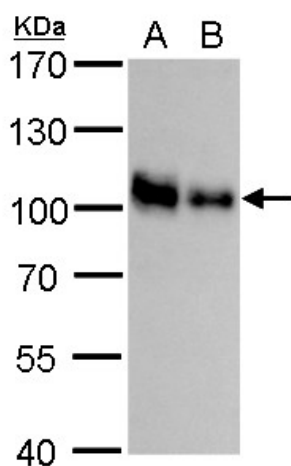
CDW44; CSPG8; ECMR-III; HCELL; HUTCH-I; IN; LHR; MC56; MDU2; MDU3; MIC4; Pgp1

Protein Families:

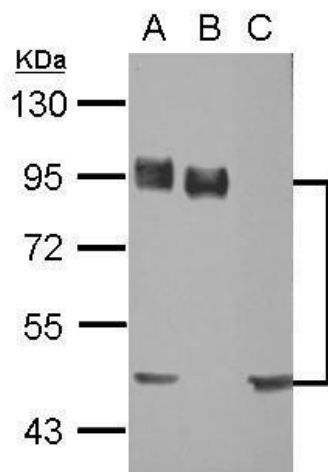
Adult stem cells, Cancer stem cells, Druggable Genome, Embryonic stem cells, ES Cell Differentiation/IPS, Stem cell relevant signaling - DSL/Notch pathway, Transmembrane

Protein Pathways:

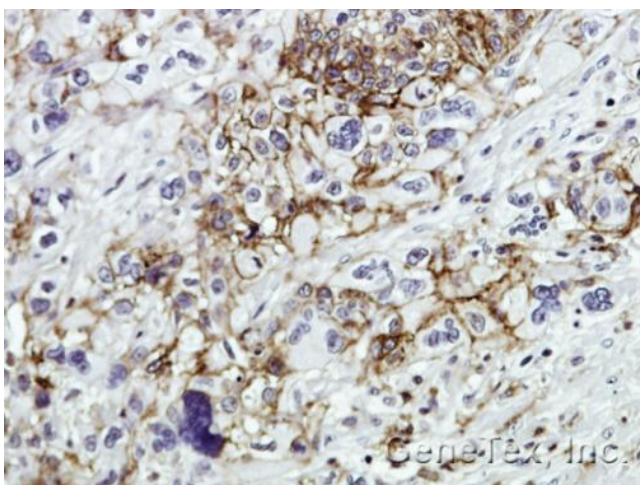
ECM-receptor interaction, Hematopoietic cell lineage

Product images:

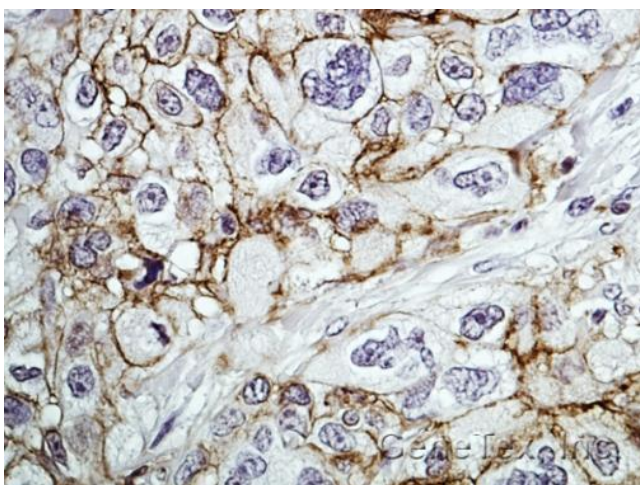
CD44 antibody detects CD44 protein by western blot analysis. A. 30 ug A549 whole cell lysate/extract. B. 30 ug H1299 whole cell lysate/extract. 7.5 % SDS-PAGE. CD44 antibody (TA308864) dilution: 1:5000



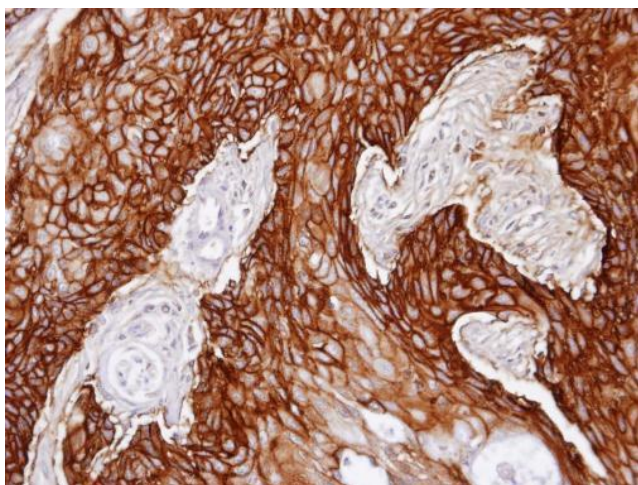
Sample (30 ug of whole cell lysate). A: A549. B: H1299. C: MCF-7. 10% SDS PAGE. TA308864 diluted at 1:10000.



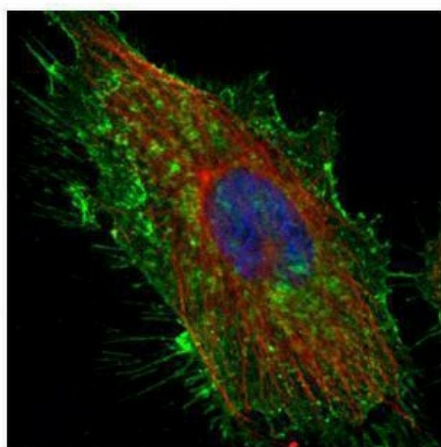
Immunohistochemical analysis of paraffin-embedded Human pancreatic tumor, using CD44 (TA308864) antibody at 1:100 dilution.



Immunohistochemical analysis of paraffin-embedded Human pancreatic tumor, using CD44 (TA308864) antibody at 1:100 dilution.



Immunohistochemical analysis of paraffin-embedded Cal27 xenograft, using CD44 (TA308864) antibody at 1:100 dilution.



Confocal immunofluorescence analysis (Olympus FV10i) of methanol-fixed HeLa, using CD44 (TA308864) antibody (Green) at 1:500 dilution. Alpha-tubulin filaments were labeled with anti-alpha tubulin antibody (Red) at 1:2000.