

## Product datasheet for **TA308863**

### Caveolin 2 (CAV2) Rabbit Polyclonal Antibody

#### Product data:

Product Type:	Primary Antibodies
Applications:	IF, IHC, IP, WB
Recommended Dilution:	ICC/IF:1:100-1:1000; IHC:1:100-1:1000; WB:1:500-1:3000
Reactivity:	Human (Predicted: Rat, Dog, Feline, Pig, Rabbit, Sheep, Bovine, Rhesus Monkey, Mouse)
Host:	Rabbit
Isotype:	IgG
Clonality:	Polyclonal
Immunogen:	Synthetic peptide corresponding to a region within amino acids 1 and 45 of Caveolin 2
Formulation:	0.1M Tris, 0.1M Glycine, 10% Glycerol (pH7). 0.01% Thimerosal was added as a preservative.
Concentration:	lot specific
Purification:	Purified by antigen-affinity chromatography.
Conjugation:	Unconjugated
Storage:	Store at -20°C as received.
Stability:	Stable for 12 months from date of receipt.
Predicted Protein Size:	18 kDa
Gene Name:	caveolin 2
Database Link:	<a href="#">NP_001224</a> <a href="#">Entrez Gene 12390</a> <a href="#">MouseEntrez Gene 363425</a> <a href="#">RatEntrez Gene 475294</a> <a href="#">DogEntrez Gene 858</a> <a href="#">Human</a> <a href="#">P51636</a>

**Background:** The protein encoded by this gene is a major component of the inner surface of caveolae, small invaginations of the plasma membrane, and is involved in essential cellular functions, including signal transduction, lipid metabolism, cellular growth control and apoptosis. This protein may function as a tumor suppressor. CAV1 and CAV2 are located next to each other on chromosome 7 and express colocalizing proteins that form a stable hetero-oligomeric complex. Two transcript variants encoding distinct isoforms have been identified for this gene. By using alternative initiation codons in the same reading frame, two isoforms (alpha and beta) are encoded by one transcript. [provided by RefSeq]



[View online »](#)

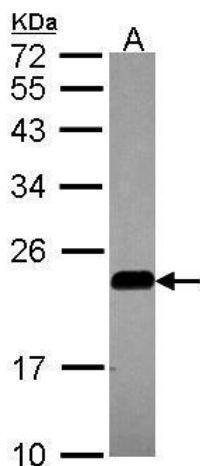
**Synonyms:** CAV

**Note:** Seq homology of immunogen across species: Mouse (100%), Rat (100%), Dog (93%), Cat (100%), Pig (100%), Rabbit (100%), Sheep (100%), Rhesus Monkey (100%), Bovine (100%)

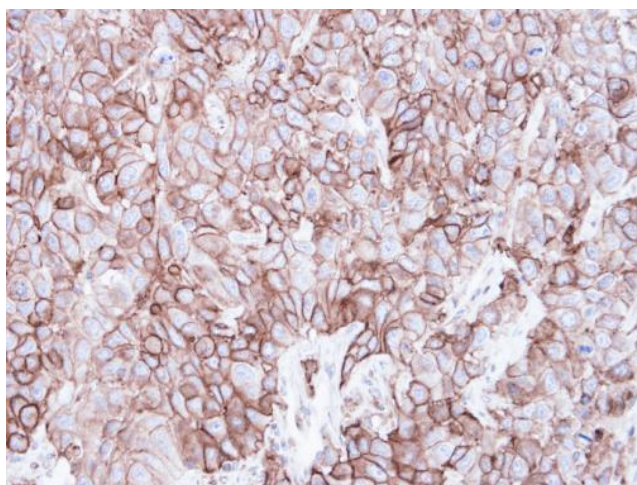
**Protein Families:** Druggable Genome, Transmembrane

**Protein Pathways:** Focal adhesion

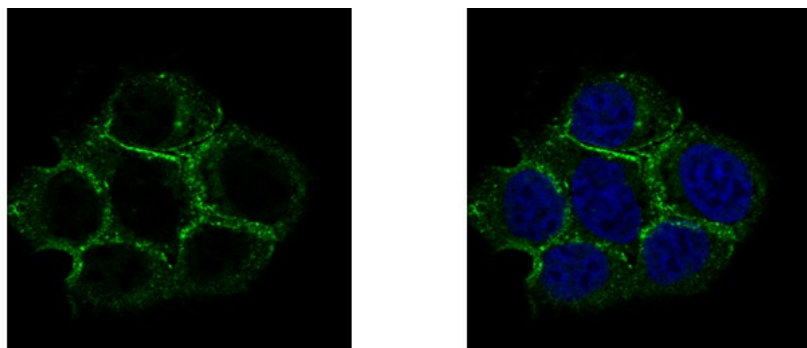
**Product images:**



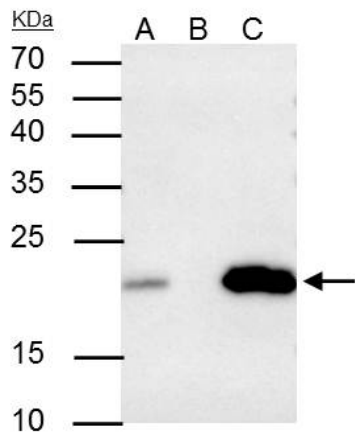
Sample (30 ug of whole cell lysate). A: A549. 12% SDS PAGE. TA308863 diluted at 1:1000.



Immunohistochemical analysis of paraffin-embedded FaDu xenograft, using Caveolin 2 (TA308863) antibody at 1:500 dilution.



Caveolin 2 antibody detects Caveolin 2 protein at membrane by immunofluorescent analysis.  
 Sample: A431 cells were fixed in 4% paraformaldehyde at RT for 15 min. Green: Caveolin 2 protein stained by Caveolin 2 antibody (TA308863) diluted at 1:500. Blue: Ho



Caveolin 2 antibody immunoprecipitates caveolin 2 protein in IP experiments. IP samples: A549 whole cell extract. A. 30 ug A549 whole cell extract. B. Control with 4 ug of preimmune Rabbit IgG. C. Immunoprecipitation of caveolin 2 protein by 4 ug Caveolin