

Product datasheet for **TA308862**

CASQ1 Rabbit Polyclonal Antibody

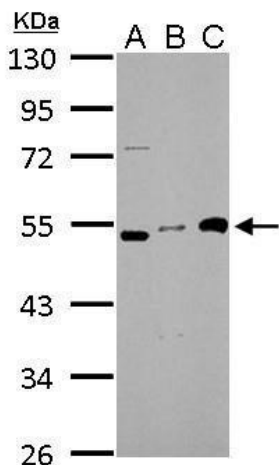
Product data:

Product Type:	Primary Antibodies
Applications:	IHC, WB
Recommended Dilution:	IHC:1:100-1:1000; WB:1:1000-1:10000
Reactivity:	Human
Host:	Rabbit
Isotype:	IgG
Clonality:	Polyclonal
Immunogen:	Recombinant fragment corresponding to a region within amino acids 36 and 295 of Calsequestrin 1 (Uniprot ID#P31415)
Formulation:	0.1M Tris, 0.1M Glycine, 10% Glycerol (pH7). 0.01% Thimerosal was added as a preservative.
Concentration:	lot specific
Purification:	Purified by antigen-affinity chromatography.
Conjugation:	Unconjugated
Storage:	Store at -20°C as received.
Stability:	Stable for 12 months from date of receipt.
Predicted Protein Size:	45 kDa
Gene Name:	calsequestrin 1
Database Link:	NP_001222 Entrez Gene 844 Human P31415
Background:	The protein encoded by this gene is a mitochondrial calcium-binding protein located in the luminal space of the terminal cisternae of the sarcoplasmic reticulum. The protein binds and putatively stores calcium ions. The protein is absent in patients with Duchenne and Becker types of muscular dystrophy. [provided by RefSeq]
Synonyms:	CASQ; PDIB1; VMCQA

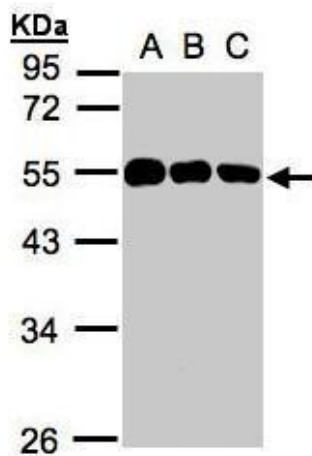


[View online »](#)

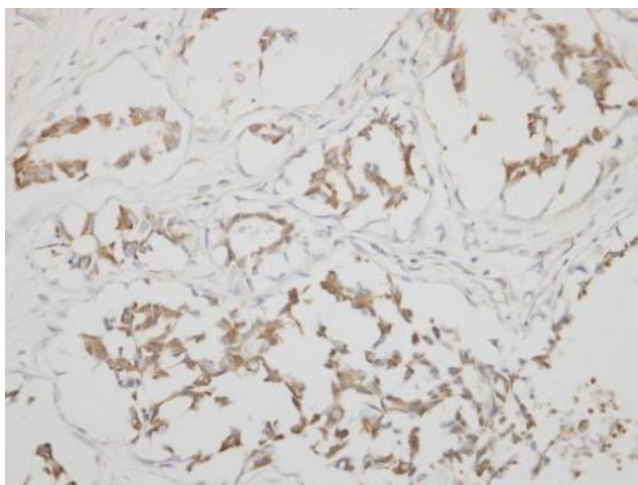
Product images:



Calsequestrin 1 antibody detects CASQ1 protein by Western blot analysis. A. 30 ug GL261 whole cell lysate/extract. B. 30 ug Raw264.7 whole cell lysate/extract. C. 30 ug C2C12 whole cell lysate/extract. 10 % SDS-PAGE. Calsequestrin 1 antibody (TA308862) di



Sample (30 ug whole cell lysate). A:H1299. B:HeLa S3. C:Hep G2. 10% SDS PAGE. TA308862 diluted at 1:1000



Immunohistochemical analysis of paraffin-embedded SNU16 xenograft, using Calsequestrin 1 (TA308862) antibody at 1:500 dilution.