

Product datasheet for **TA308856**

Complement C5 (C5) Rabbit Polyclonal Antibody

Product data:

Product Type:	Primary Antibodies
Applications:	IHC, WB
Recommended Dilution:	IHC:1:100-1:1000; WB:1:500-1:3000
Reactivity:	Human (Predicted: Pig)
Host:	Rabbit
Isotype:	IgG
Clonality:	Polyclonal
Immunogen:	Recombinant fragment corresponding to a region within amino acids 1223 and 1451 of C5 (Uniprot ID#P01031)
Formulation:	0.1M Tris, 0.1M Glycine, 10% Glycerol (pH7). 0.01% Thimerosal was added as a preservative.
Concentration:	lot specific
Purification:	Purified by antigen-affinity chromatography.
Conjugation:	Unconjugated
Storage:	Store at -20°C as received.
Stability:	Stable for 12 months from date of receipt.
Predicted Protein Size:	188 kDa
Gene Name:	complement component 5
Database Link:	NP_001726 Entrez Gene 727 Human P01031



[View online »](#)

Background:

The protein encoded by this gene is the fifth component of complement, which plays an important role in inflammatory and cell killing processes. This protein is comprised of alpha and beta polypeptide chains that are linked by a disulfide bridge. An activation peptide, C5a, which is an anaphylatoxin that possesses potent spasmogenic and chemotactic activity, is derived from the alpha polypeptide via cleavage with a convertase. The C5b macromolecular cleavage product can form a complex with the C6 complement component, and this complex is the basis for formation of the membrane attack complex, which includes additional complement components. Mutations in this gene cause complement component 5 deficiency, a disease where patients show a propensity for severe recurrent infections. Defects in this gene have also been linked to a susceptibility to liver fibrosis and to rheumatoid arthritis. [provided by RefSeq]

Synonyms:

C5a; C5b; C5D; CPAMD4; ECLZB

Note:

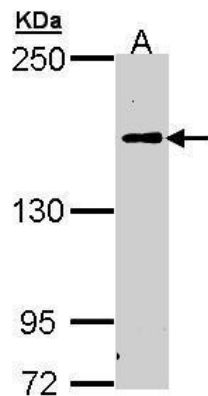
Seq homology of immunogen across species: Pig (80%)

Protein Families:

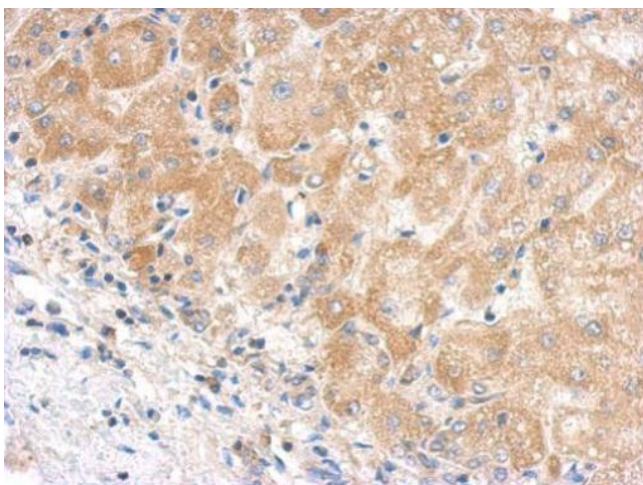
Druggable Genome

Protein Pathways:

Complement and coagulation cascades, Prion diseases, Systemic lupus erythematosus

Product images:

Sample (30 ug of whole cell lysate). A: H1299. 5% SDS PAGE. TA308856 diluted at 1:1000.



Immunohistochemical analysis of paraffin-embedded hepatoma, using C5 antibody (TA308856) antibody at 1:500 dilution.