

## Product datasheet for **TA308855**

### Complement C3 (C3) Rabbit Polyclonal Antibody

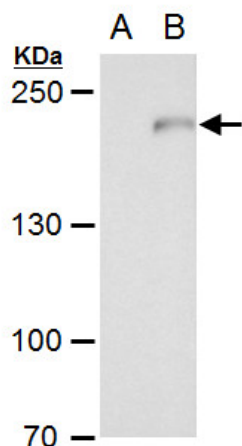
#### Product data:

Product Type:	Primary Antibodies
Applications:	IF, IHC, WB
Recommended Dilution:	ICC/IF:1:100-1:1000; IHC:1:100-1:1000; WB:1:5000-1:20000
Reactivity:	Human
Host:	Rabbit
Isotype:	IgG
Clonality:	Polyclonal
Immunogen:	Recombinant fragment corresponding to a region within amino acids 1448 and 1655 of (Uniprot ID#P01024)
Formulation:	1XPBS, 1% BSA, 20% Glycerol (pH7). 0.025% ProClin 300 was added as a preservative.
Concentration:	lot specific
Purification:	Purified by antigen-affinity chromatography.
Conjugation:	Unconjugated
Storage:	Store at -20°C as received.
Stability:	Stable for 12 months from date of receipt.
Predicted Protein Size:	187 kDa
Gene Name:	complement component 3
Database Link:	<a href="#">NP_000055</a> <a href="#">Entrez Gene 718 Human P01024</a>
Background:	Complement component C3 plays a central role in the activation of complement system. Its activation is required for both classical and alternative complement activation pathways. People with C3 deficiency are susceptible to bacterial infection. [provided by RefSeq]
Synonyms:	AHUS5; ARMD9; ASP; C3a; C3b; CPAMD1; HEL-S-62p
Protein Families:	Druggable Genome
Protein Pathways:	Complement and coagulation cascades, Systemic lupus erythematosus

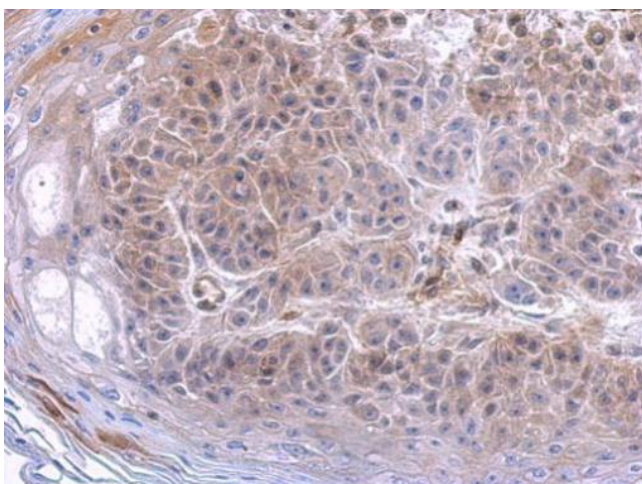


[View online »](#)

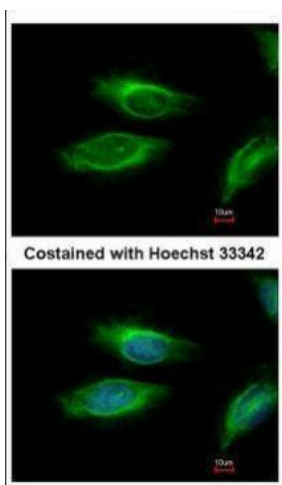
Product images:



C3 antibody [C3], C-term detects C3 protein by western blot analysis. A. 30 ug 293T whole cell extract. B. 30 ug whole cell extract of human C3-transfected 293T cells. 5 % SDS-PAGE. C3 antibody [C3], C-term (TA308855) dilution: 1:20000



Immunohistochemical analysis of paraffin-embedded mouse brain, using C3 (TA308855) antibody at 1:500 dilution.



Immunofluorescence analysis of paraformaldehyde-fixed HeLa, using C3 (TA308855) antibody at 1:200 dilution.