

Product datasheet for **TA308854**

C2 Rabbit Polyclonal Antibody

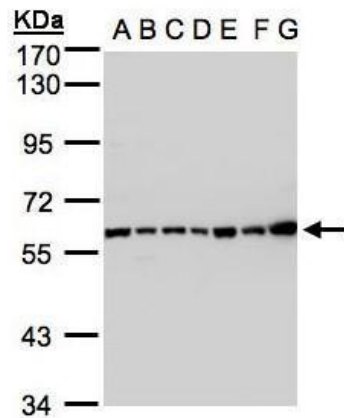
Product data:

Product Type:	Primary Antibodies
Applications:	IF, WB
Recommended Dilution:	ICC/IF:1:100-1:1000; WB:1:500-1:3000
Reactivity:	Human (Predicted: Pig, Bovine)
Host:	Rabbit
Isotype:	IgG
Clonality:	Polyclonal
Immunogen:	Recombinant fragment corresponding to a region within amino acids 265 and 642 of Complement C2 (Uniprot ID#P06681)
Formulation:	0.1M Tris, 0.1M Glycine, 10% Glycerol (pH7). 0.01% Thimerosal was added as a preservative.
Concentration:	lot specific
Purification:	Purified by antigen-affinity chromatography.
Conjugation:	Unconjugated
Storage:	Store at -20°C as received.
Stability:	Stable for 12 months from date of receipt.
Predicted Protein Size:	83 kDa
Gene Name:	complement component 2
Database Link:	NP_001139375 Entrez Gene 717 Human P06681

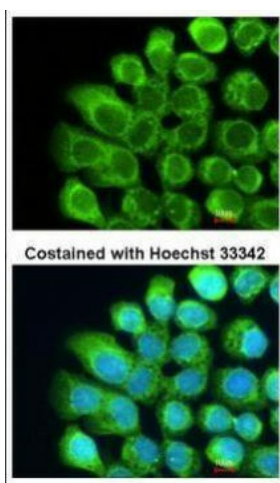


[View online »](#)

- Background:** Component C2 is a serum glycoprotein that functions as part of the classical pathway of the complement system. Activated C1 cleaves C2 into C2a and C2b. The serine proteinase C2a then combines with complement factor 4b to create the C3 or C5 convertase. Deficiency of C2 has been reported to associated with certain autoimmune diseases and SNPs in this gene have been associated with altered susceptibility to age-related macular degeneration. This gene localizes within the class III region of the MHC on the short arm of chromosome 6. Alternative splicing results in multiple transcript variants encoding distinct isoforms. Additional transcript variants have been described in publications but their full-length sequence has not been determined.
- Synonyms:** ARMD14; CO2
- Note:** Seq homology of immunogen across species: Pig (84%), Bovine (80%)
- Protein Families:** Druggable Genome, Protease, Secreted Protein
- Protein Pathways:** Complement and coagulation cascades, Systemic lupus erythematosus
- Product images:**



Sample (30 ug whole cell lysate). A: 293T. B: A431. C: H1299. D: HeLa S3. E: Hep G2. F: MOLT4. G: Raji. 7.5% SDS PAGE. TA308854 diluted at 1:1000



Immunofluorescence analysis of methanol-fixed A431, using Complement C2 (TA308854) antibody at 1:200 dilution.