

Product datasheet for **TA308853**

BPGM Rabbit Polyclonal Antibody

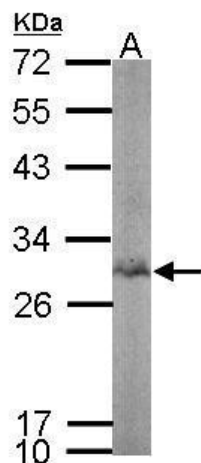
Product data:

Product Type:	Primary Antibodies
Applications:	IF, WB
Recommended Dilution:	ICC/IF:1:100-1:1000; WB:1:500-1:3000
Reactivity:	Human, Mouse (Predicted: Chicken, Rabbit, Rat, Bovine)
Host:	Rabbit
Isotype:	IgG
Clonality:	Polyclonal
Immunogen:	Recombinant fragment corresponding to a region within amino acids 1 and 246 of BPGM (Uniprot ID#P07738)
Formulation:	0.1M Tris, 0.1M Glycine, 10% Glycerol (pH7). 0.01% Thimerosal was added as a preservative.
Concentration:	lot specific
Purification:	Purified by antigen-affinity chromatography.
Conjugation:	Unconjugated
Storage:	Store at -20°C as received.
Stability:	Stable for 12 months from date of receipt.
Predicted Protein Size:	30 kDa
Gene Name:	bisphosphoglycerate mutase
Database Link:	NP_954655 Entrez Gene 12183 MouseEntrez Gene 296973 RatEntrez Gene 669 Human P07738
Synonyms:	DPGM
Note:	Seq homology of immunogen across species: Chicken (81%), Rabbit (97%), Rat (92%), Bovine (94%)
Protein Families:	Druggable Genome
Protein Pathways:	Glycolysis / Gluconeogenesis, Metabolic pathways

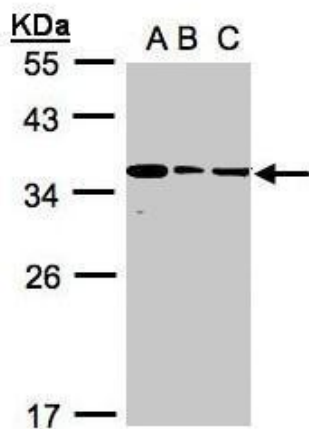


[View online »](#)

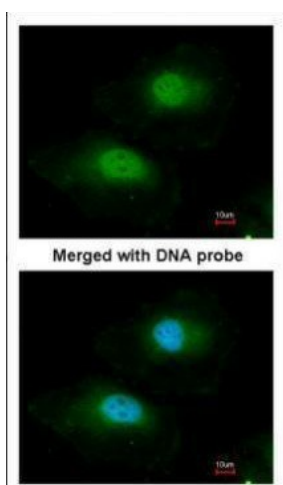
Product images:



Sample (50 ug of whole cell lysate). A: mouse spleen. 12% SDS PAGE. TA308853 diluted at 1:1000.



Sample (30 ug whole cell lysate). A:293T. B:A431. C:H1299. 12% SDS PAGE. TA308853 diluted at 1:1000



Immunofluorescence analysis of paraformaldehyde-fixed HeLa, using BPGM (TA308853) antibody at 1:100 dilution.