

## Product datasheet for **TA308852**

### **Bcl x (BCL2L1) Rabbit Polyclonal Antibody**

#### **Product data:**

Product Type:	Primary Antibodies
Applications:	IF, IHC, IP, WB
Recommended Dilution:	ICC/IF:1:100-1:1000; IHC:1:100-1:1000; WB:1:500-1:3000
Reactivity:	Human, Mouse (Predicted: Dog)
Host:	Rabbit
Isotype:	IgG
Clonality:	Polyclonal
Immunogen:	Recombinant fragment corresponding to a region within amino acids 1 and 208 of Bcl-X (Uniprot ID#Q07817)
Formulation:	0.1M Tris, 0.1M Glycine, 10% Glycerol (pH7). 0.01% Thimerosal was added as a preservative.
Concentration:	lot specific
Purification:	Purified by antigen-affinity chromatography.
Conjugation:	Unconjugated
Storage:	Store at -20°C as received.
Stability:	Stable for 12 months from date of receipt.
Predicted Protein Size:	26 kDa
Gene Name:	BCL2 like 1
Database Link:	<a href="#">NP_001182</a> <a href="#">Entrez Gene 12048 Mouse</a> <a href="#">Entrez Gene 403618 Dog</a> <a href="#">Entrez Gene 598 Human</a> <a href="#">Q07817</a>



[View online »](#)

**Background:**

The protein encoded by this gene belongs to the BCL-2 protein family. BCL-2 family members form hetero- or homodimers and act as anti- or pro-apoptotic regulators that are involved in a wide variety of cellular activities. The proteins encoded by this gene are located at the outer mitochondrial membrane, and have been shown to regulate outer mitochondrial membrane channel (VDAC) opening. VDAC regulates mitochondrial membrane potential, and thus controls the production of reactive oxygen species and release of cytochrome C by mitochondria, both of which are the potent inducers of cell apoptosis. Two alternatively spliced transcript variants, which encode distinct isoforms, have been reported. The longer isoform acts as an apoptotic inhibitor and the shorter form acts as an apoptotic activator. [provided by RefSeq]

**Synonyms:**

Bcl-X; BCL-XL; BCL2L; BCLX; PPP1R52; S

**Note:**

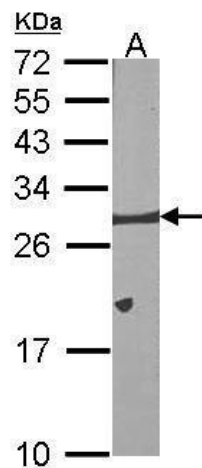
Seq homology of immunogen across species: Dog (100%)

**Protein Families:**

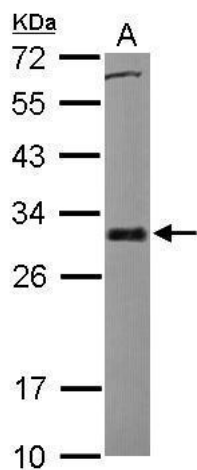
Druggable Genome, ES Cell Differentiation/IPS, Transmembrane

**Protein Pathways:**

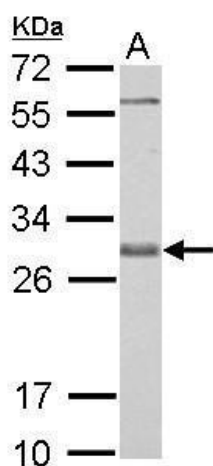
Amyotrophic lateral sclerosis (ALS), Apoptosis, Chronic myeloid leukemia, Jak-STAT signaling pathway, Pancreatic cancer, Pathways in cancer, Small cell lung cancer

**Product images:**

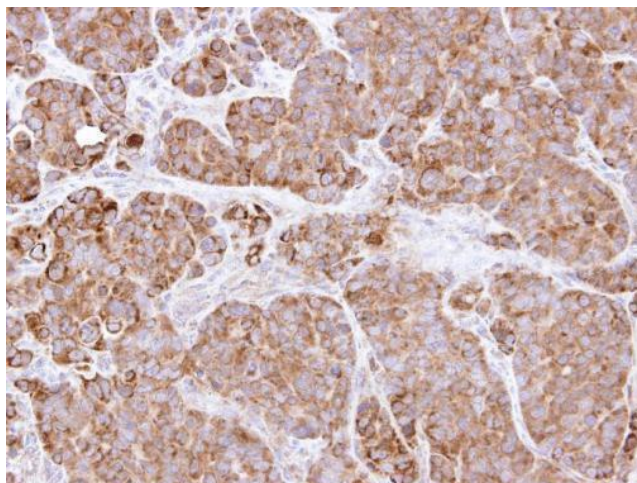
Sample (30 ug of whole cell lysate). A:NIH-3T3.  
12% SDS PAGE. TA308852 diluted at 1:1000.



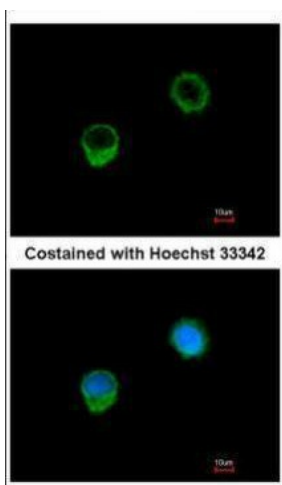
Sample (30 ug of whole cell lysate). A: HCT116. 12% SDS PAGE. TA308852 diluted at 1:1000.



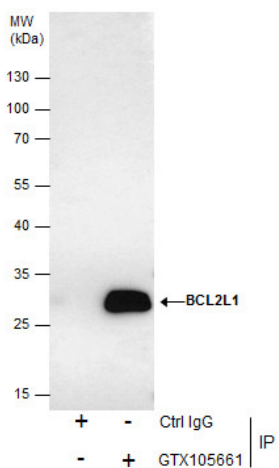
Bcl-X antibody detects BCL2L1 protein by Western blot analysis. A. 30 ug PC-12 whole cell lysate/extract. 12 % SDS-PAGE. Bcl-X antibody (TA308852) dilution: 1:1000



Immunohistochemical analysis of paraffin-embedded SW480 xenograft, using BCL2L1 (TA308852) antibody at 1:500 dilution.



Immunofluorescence analysis of methanol-fixed A549, using BCL-x (TA308852) antibody at 1:500 dilution.



Immunoprecipitation of Bcl-X protein from HCT-116 whole cell extracts using 5 µg of Bcl-X antibody (TA308852). Western blot analysis was performed using Bcl-X antibody (TA308852). An anti-rabbit IgG was used as a secondary reagent.