

Product datasheet for **TA308849**

ARF3 Rabbit Polyclonal Antibody

Product data:

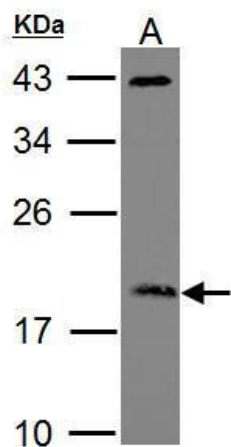
Product Type:	Primary Antibodies
Applications:	IF, IHC, WB
Recommended Dilution:	ICC/IF:1:100-1:1000; IHC:1:100-1:1000; WB:1:500-1:3000
Reactivity:	Human (Predicted: Mouse, Rat, Xenopus, Pig, Bovine, X. tropicalis)
Host:	Rabbit
Isotype:	IgG
Clonality:	Polyclonal
Immunogen:	Synthetic peptide corresponding to a region within amino acids 15 and 181 of ARF3
Formulation:	0.1M Tris, 0.1M Glycine, 20% Glycerol (pH7). 0.01% Thimerosal was added as a preservative.
Concentration:	lot specific
Purification:	Purified by antigen-affinity chromatography.
Conjugation:	Unconjugated
Storage:	Store at -20°C as received.
Stability:	Stable for 12 months from date of receipt.
Predicted Protein Size:	21 kDa
Gene Name:	ADP ribosylation factor 3
Database Link:	NP_001650 Entrez Gene 11842 Mouse Entrez Gene 140940 Rat Entrez Gene 377 Human P61204
Background:	ADP-ribosylation factor 3 (ARF3) is a member of the human ARF gene family. These genes encode small guanine nucleotide-binding proteins that stimulate the ADP-ribosyltransferase activity of cholera toxin and play a role in vesicular trafficking and as activators of phospholipase D. The gene products include 6 ARF proteins and 11 ARF-like proteins and constitute 1 family of the RAS superfamily. The ARF proteins are categorized as class I (ARF1, ARF2, and ARF3), class II (ARF4 and ARF5) and class III (ARF6) and members of each class share a common gene organization. The ARF3 gene contains five exons and four introns. [provided by RefSeq]
Synonyms:	ADP-ribosylation factor 3; ADP-ribosylation factor protein 3; small GTP binding protein



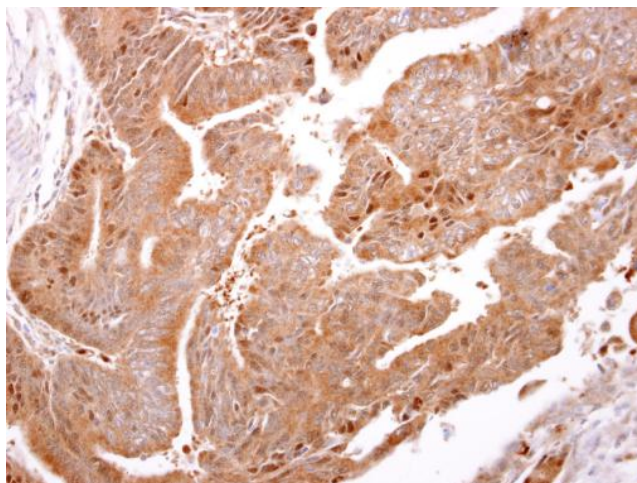
[View online »](#)

Note: Seq homology of immunogen across species: Mouse (100%), Rat (100%), Xenopus laevis (100%), Xenopus Tropicalis (100%), Pig (100%), Bovine (100%)

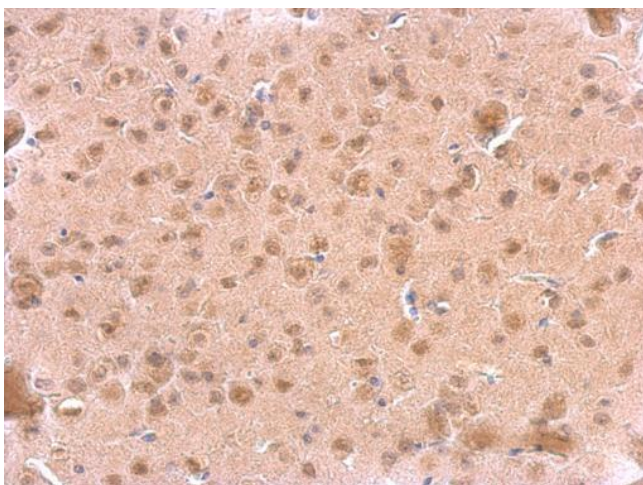
Product images:



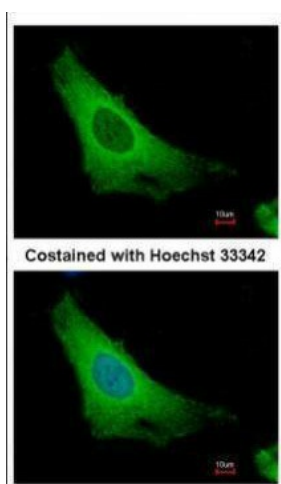
Sample (30 ug of whole cell lysate). A: Raji. 12% SDS PAGE. ADP-ribosylation factor 3 antibody. TA308849 diluted at 1:1000



ARF3 antibody detects ARF3 protein at cytosol on human colon carcinoma by immunohistochemical analysis. Sample: Paraffin-embedded human colon carcinoma. ARF3 antibody (TA308849) dilution: 1:500.



ARF3 antibody detects ARF3 protein at cytosol on mouse fore brain by immunohistochemical analysis. Sample: Paraffin-embedded mouse fore brain. ARF3 antibody (TA308849) dilution: 1:500.



Immunofluorescence analysis of methanol-fixed HeLa, using ARF3 (TA308849) antibody at 1:500 dilution.