

Product datasheet for **TA308848**

Amyloid Precursor Protein (APP) Rabbit Polyclonal Antibody

Product data:

Product Type:	Primary Antibodies
Applications:	IF, IHC, WB
Recommended Dilution:	ICC/IF:1:100-1:1000; IHC:1:100-1:1000; WB:1:500-1:3000
Reactivity:	Human, Mouse (Predicted: Dog, Pig, Chimpanzee, Bovine)
Host:	Rabbit
Isotype:	IgG
Clonality:	Polyclonal
Immunogen:	Recombinant fragment corresponding to a region within amino acids 602 and 770 of beta Amyloid (Uniprot ID#P05067)
Formulation:	1XPBS, 10% Glycerol (pH7). 0.01% Thimerosal was added as a preservative.
Concentration:	lot specific
Purification:	Purified by antigen-affinity chromatography.
Conjugation:	Unconjugated
Storage:	Store at -20°C as received.
Stability:	Stable for 12 months from date of receipt.
Predicted Protein Size:	87 kDa
Gene Name:	amyloid beta precursor protein
Database Link:	NP_001129603 Entrez Gene 11820 Mouse Entrez Gene 403407 Dog Entrez Gene 351 Human P05067

Background: This gene encodes a cell surface receptor and transmembrane precursor protein that is cleaved by secretases to form a number of peptides. Some of these peptides are secreted and can bind to the acetyltransferase complex APBB1/TIP60 to promote transcriptional activation, while others form the protein basis of the amyloid plaques found in the brains of patients with Alzheimer disease. Mutations in this gene have been implicated in autosomal dominant Alzheimer disease and cerebroarterial amyloidosis (cerebral amyloid angiopathy). Multiple transcript variants encoding several different isoforms have been found for this gene. [provided by RefSeq]



[View online »](#)

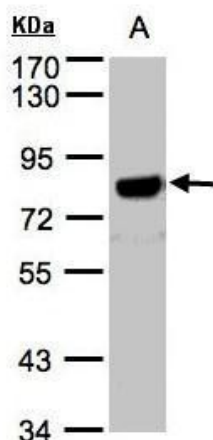
Synonyms: AAA; ABETA; ABPP; AD1; APPI; CTFgamma; CVAP; PN-II; PN2

Note: Seq homology of immunogen across species: Dog (100%), Pig (100%), Chimpanzee (100%), Bovine (100%)

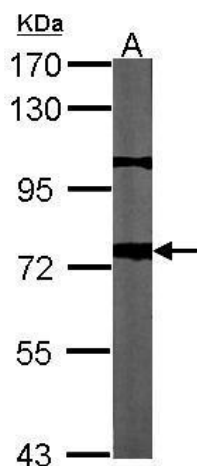
Protein Families: Druggable Genome, Transmembrane

Protein Pathways: Alzheimer's disease

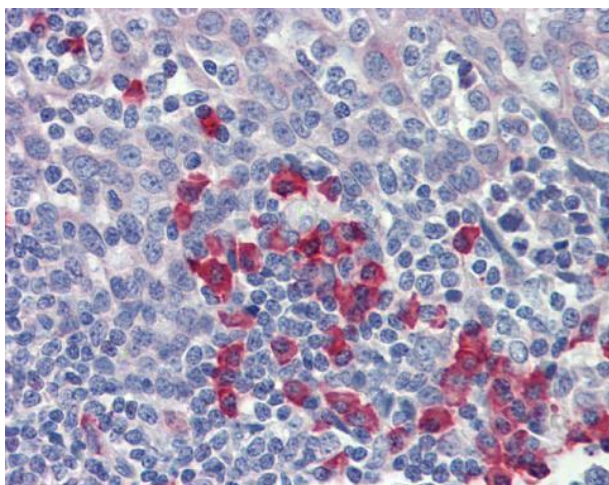
Product images:



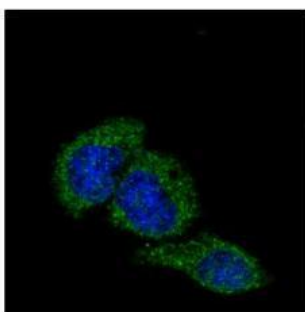
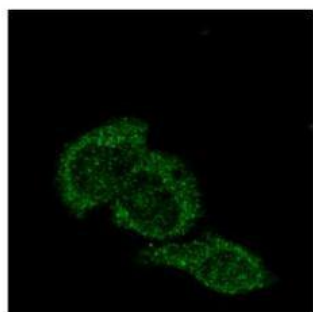
Sample (30 ug of whole cell lysate). A:Hep G2.
7.5% SDS PAGE. TA308848 diluted at 1:1500



Sample (30 ug of whole cell lysate). A:NIH-3T3
7.5% SDS PAGE. TA308848 diluted at 1:1000.



Immunohistochemical analysis of paraffin-embedded Tonsil, plasma cells, using beta A4 Amyloid (TA308848) antibody (10 ug/ml).



beta Amyloid antibody [C2C3], C-term detects APP protein at cytoplasm by confocal immunofluorescent analysis. Sample: A431 cells were fixed in ice-cold MeOH for 5 min. Green: APP protein stained by beta Amyloid antibody [C2C3], C-term (TA308848) diluted a