

Product datasheet for **TA308842**

gamma Actin (ACTG1) Rabbit Polyclonal Antibody

Product data:

Product Type:	Primary Antibodies
Applications:	IHC, WB
Recommended Dilution:	IHC:1:100-1:1000; WB:1:500-1:3000
Reactivity:	Human, Mouse (Predicted: Rat, Xenopus, Chicken, Bovine, X. tropicalis)
Host:	Rabbit
Isotype:	IgG
Clonality:	Polyclonal
Immunogen:	Recombinant protein fragment contain a sequence corresponding to a region within amino acids 1 and 375 of gamma Actin
Formulation:	1XPBS, 10% Glycerol (pH7). 0.01% Thimerosal was added as a preservative.
Concentration:	lot specific
Purification:	Purified by antigen-affinity chromatography.
Conjugation:	Unconjugated
Storage:	Store at -20°C as received.
Stability:	Stable for 12 months from date of receipt.
Predicted Protein Size:	42 kDa
Gene Name:	actin gamma 1
Database Link:	NP_001605 Entrez Gene 11465 Mouse Entrez Gene 287876 Rat Entrez Gene 71 Human P63261
Background:	Actins are highly conserved proteins that are involved in various types of cell motility, and maintenance of the cytoskeleton. In vertebrates, three main groups of actin isoforms, alpha, beta and gamma have been identified. The alpha actins are found in muscle tissues and are a major constituent of the contractile apparatus. The beta and gamma actins co-exist in most cell types as components of the cytoskeleton, and as mediators of internal cell motility. Actin, gamma 1, encoded by this gene, is a cytoplasmic actin found in nonmuscle cells. [provided by RefSeq]
Synonyms:	ACT; ACTG; BRWS2; DFNA20; DFNA26; HEL-176

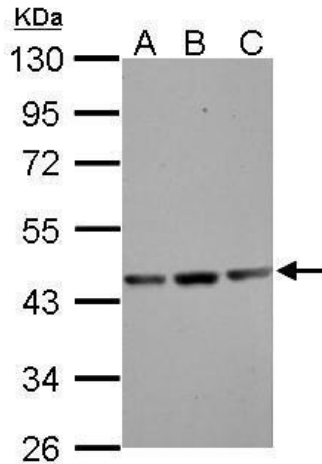


[View online »](#)

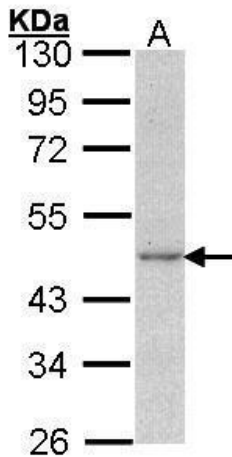
Note: Seq homology of immunogen across species: Rat (100%), Xenopus laevis (100%), Xenopus Tropicalis (100%), Chicken (100%), Bovine (100%)

Protein Pathways: Adherens junction, Arrhythmogenic right ventricular cardiomyopathy (ARVC), Dilated cardiomyopathy, Focal adhesion, Hypertrophic cardiomyopathy (HCM), Leukocyte transendothelial migration, Pathogenic Escherichia coli infection, Regulation of actin cytoskeleton, Tight junction, Vibrio cholerae infection, Viral myocarditis

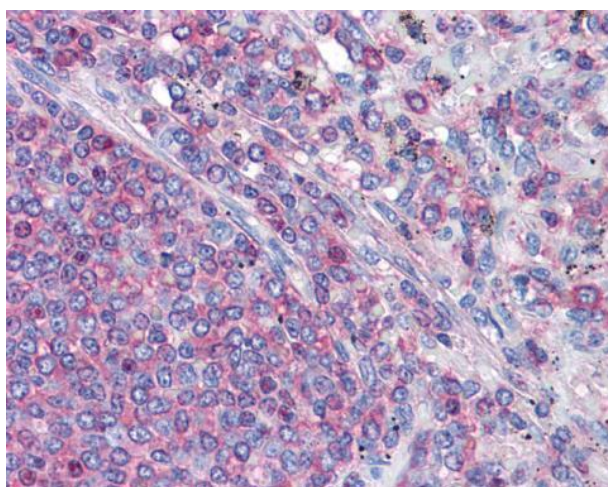
Product images:



Sample (30 ug of whole cell lysate). A: NIH-3T3. B: JC. C: BCL-1. 10% SDS PAGE. TA308842 diluted at 1:1000.



Sample (30 ug of whole cell lysate). A: A431. 10% SDS PAGE. TA308842 diluted at 1:1000.



Immunohistochemical analysis of paraffin-embedded Spleen, using gamma Actin (TA308842) antibody (10 ug/ml).