

Product datasheet for **TA308841**

ACTC1 Rabbit Polyclonal Antibody

Product data:

Product Type:	Primary Antibodies
Applications:	IF, IHC, WB
Recommended Dilution:	ICC/IF:1:100-1:1000; IHC:1:100-1:1000; WB:1:500-1:10000
Reactivity:	Human, Mouse (Predicted: Chicken, Pig, Xenopus, Bovine, X. tropicalis)
Host:	Rabbit
Isotype:	IgG
Clonality:	Polyclonal
Immunogen:	Recombinant fragment contain a sequence corresponding to a region within amino acids 99 and 354 of alpha Actin (cardiac muscle) (Uniprot ID#P68032)
Formulation:	1XPBS, 20% Glycerol (pH7). 0.025% ProClin 300 was added as a preservative.
Concentration:	lot specific
Purification:	Purified by antigen-affinity chromatography.
Conjugation:	Unconjugated
Storage:	Store at -20°C as received.
Stability:	Stable for 12 months from date of receipt.
Predicted Protein Size:	42 kDa
Gene Name:	actin, alpha, cardiac muscle 1
Database Link:	NP_005150 Entrez Gene 11464 Mouse Entrez Gene 70 Human P68032

Background: Actins are highly conserved proteins that are involved in various types of cell motility. Polymerization of globular actin (G-actin) leads to a structural filament (F-actin) in the form of a two-stranded helix. Each actin can bind to four others. The protein encoded by this gene belongs to the actin family which is comprised of three main groups of actin isoforms, alpha, beta, and gamma. The alpha actins are found in muscle tissues and are a major constituent of the contractile apparatus. Defects in this gene have been associated with idiopathic dilated cardiomyopathy (IDC) and familial hypertrophic cardiomyopathy (FHC). [provided by RefSeq]

Synonyms: ACTC; ASD5; CMD1R; CMH11; LVNC4

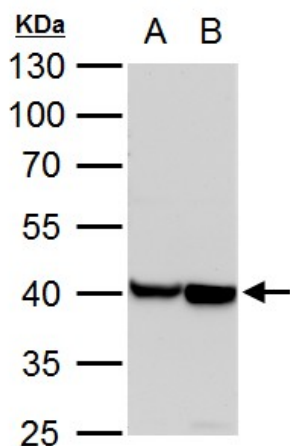


[View online »](#)

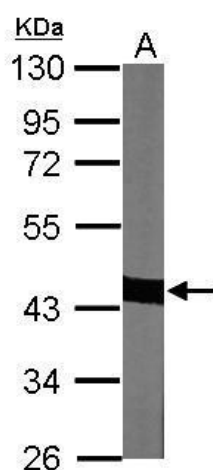
Note: Seq homology of immunogen across species: Xenopus laevis (100%), Xenopus Tropicalis (100%), Pig (100%), Chicken (100%), Bovine (100%)

Protein Pathways: Cardiac muscle contraction, Dilated cardiomyopathy, Hypertrophic cardiomyopathy (HCM)

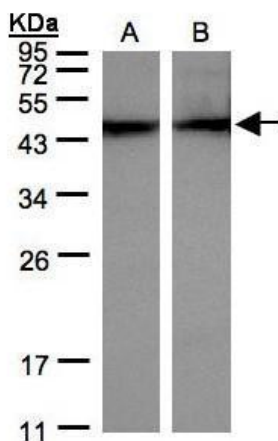
Product images:



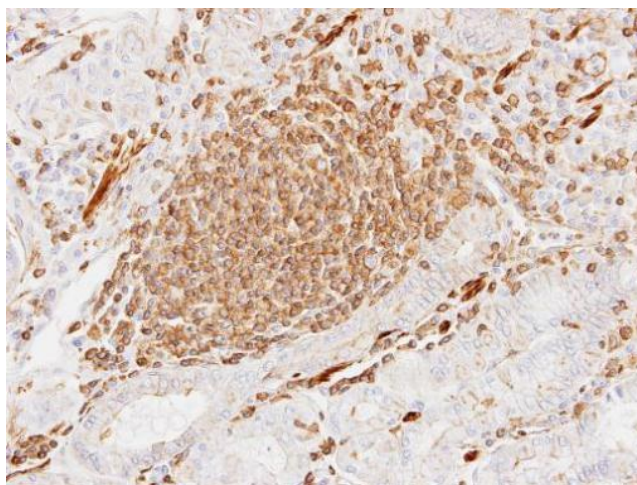
alpha Actin (cardiac muscle) antibody detects alpha Actin (cardiac muscle) protein by western blot analysis. A. 30 ug PC-12 whole cell lysate/extract. B. 30 ug Rat2 whole cell lysate/extract. 10 % SDS-PAGE. alpha Actin (cardiac muscle) antibody (TA308841)



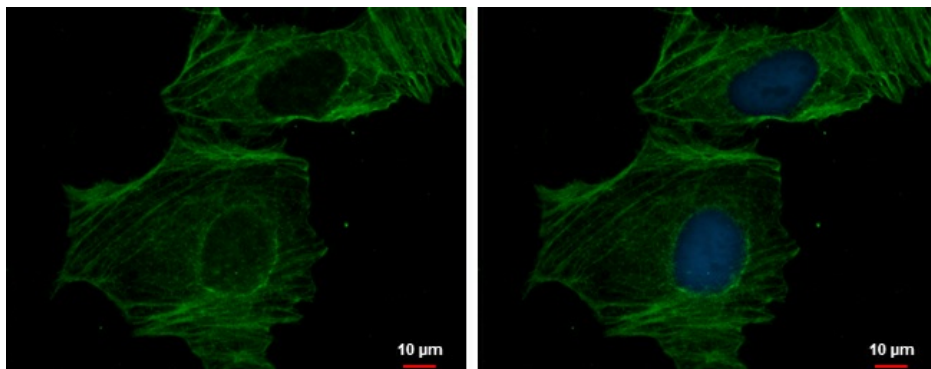
Sample (30 ug of whole cell lysate). A: NIH-3T3. 10% SDS PAGE. TA308841 diluted at 1:1000.



Sample (30 ug of whole cell lysate). A:HeLa S3. B:MOLT4. 12% SDS PAGE. TA308841 diluted at 1:500



Immunohistochemical analysis of paraffin-embedded Gastric CA, using alpha Actin (cardiac muscle) (TA308841) antibody at 1:100 dilution.



alpha Actin (cardiac muscle) antibody detects alpha Actin (cardiac muscle) protein at cytoskeleton by immunofluorescent analysis. Sample: HeLa cells were fixed in 0.5% Triton X-100 for 1 min, then ice-cold methanol for 5 min. Green: alpha Actin (cardiac m