

Product datasheet for **TA308834**

XRCC4 Rabbit Polyclonal Antibody

Product data:

Product Type:	Primary Antibodies
Applications:	IF, IHC, WB
Recommended Dilution:	ICC/IF:1:100-1:1000; IHC:1:100-1:1000; WB:1:500-1:3000
Reactivity:	Human (Predicted: Mouse, Rat, Bovine)
Host:	Rabbit
Isotype:	IgG
Clonality:	Polyclonal
Immunogen:	Synthetic peptide corresponding to a region within amino acids 216 and 309 of XRCC4 (Uniprot ID#Q13426)
Formulation:	0.1M Tris, 0.1M Glycine, 10% Glycerol (pH7). 0.01% Thimerosal was added as a preservative.
Concentration:	lot specific
Purification:	Purified by antigen-affinity chromatography.
Conjugation:	Unconjugated
Storage:	Store at -20°C as received.
Stability:	Stable for 12 months from date of receipt.
Predicted Protein Size:	38 kDa
Gene Name:	X-ray repair complementing defective repair in Chinese hamster cells 4
Database Link:	NP_071801 Entrez Gene 108138 MouseEntrez Gene 309995 RatEntrez Gene 7518 Human Q13426
Background:	The protein encoded by this gene functions together with DNA ligase IV and the DNA-dependent protein kinase in the repair of DNA double-strand break by non-homologous end joining and the completion of V(D)J recombination events. The non-homologous end-joining pathway is required both for normal development and for suppression of tumors. This gene functionally complements XR-1 Chinese hamster ovary cell mutant, which is impaired in DNA double-strand breaks produced by ionizing radiation and restriction enzymes. Alternative transcription initiation and alternative splicing generates several transcript variants. [provided by RefSeq]



[View online »](#)

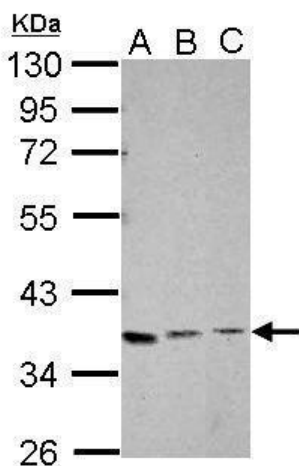
Synonyms: SSMED

Note: Seq homology of immunogen across species: Mouse (86%), Rat (86%), Bovine (93%)

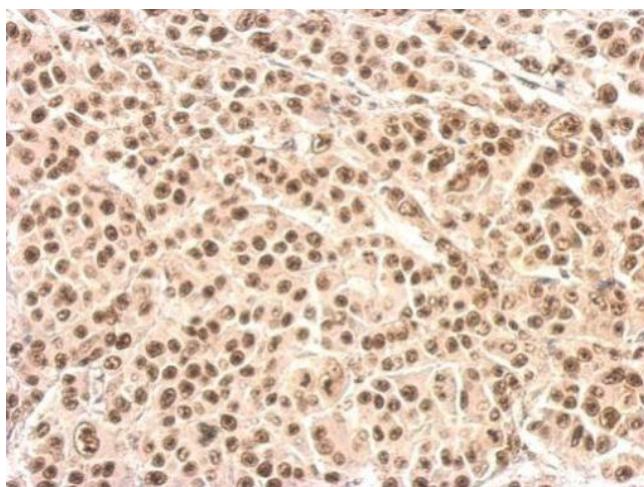
Protein Families: Druggable Genome

Protein Pathways: Non-homologous end-joining

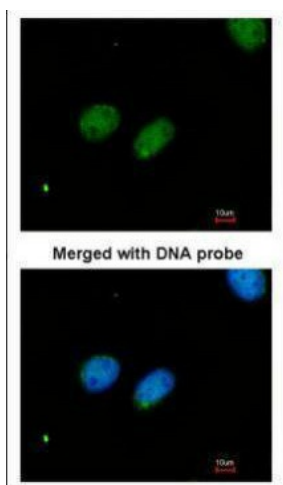
Product images:



Sample (30 ug of whole cell lysate). A: Jurkat. B: K562. C: HL-60. 10% SDS PAGE. TA308834 diluted at 1:1000.



XRCC4 antibody detects XRCC4 protein at nucleus on HBL435 xenograft by immunohistochemical analysis. Sample: Paraffin-embedded HBL435 xenograft. XRCC4 antibody (TA308834) dilution: 1:500.



Immunofluorescence analysis of paraformaldehyde-fixed HeLa, using XRCC4 (TA308834) antibody at 1:200 dilution.