

Product datasheet for **TA308830**

RPA14 (RPA3) Rabbit Polyclonal Antibody

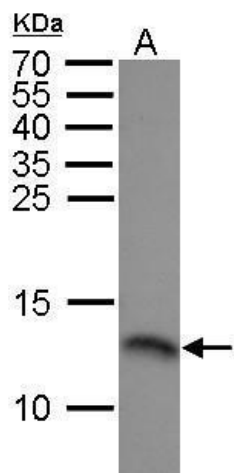
Product data:

Product Type:	Primary Antibodies
Applications:	IHC, WB
Recommended Dilution:	IHC:1:100-1:1000; WB:1:500-1:3000
Reactivity:	Human (Predicted: Cow)
Host:	Rabbit
Isotype:	IgG
Clonality:	Polyclonal
Immunogen:	Recombinant fragment corresponding to a region within amino acids 1 and 121 of RPA14 (Uniprot ID#P35244)
Formulation:	1XPBS, 20% Glycerol (pH7). 0.01% Thimerosal was added as a preservative.
Concentration:	lot specific
Purification:	Purified by antigen-affinity chromatography.
Conjugation:	Unconjugated
Storage:	Store at -20°C as received.
Stability:	Stable for 12 months from date of receipt.
Predicted Protein Size:	14 kDa
Gene Name:	replication protein A3
Database Link:	NP_002938 Entrez Gene 6119 Human P35244
Synonyms:	REPA3
Note:	Seq homology of immunogen across species: cow (86%)
Protein Families:	Druggable Genome, Stem cell - Pluripotency
Protein Pathways:	DNA replication, Homologous recombination, Mismatch repair, Nucleotide excision repair

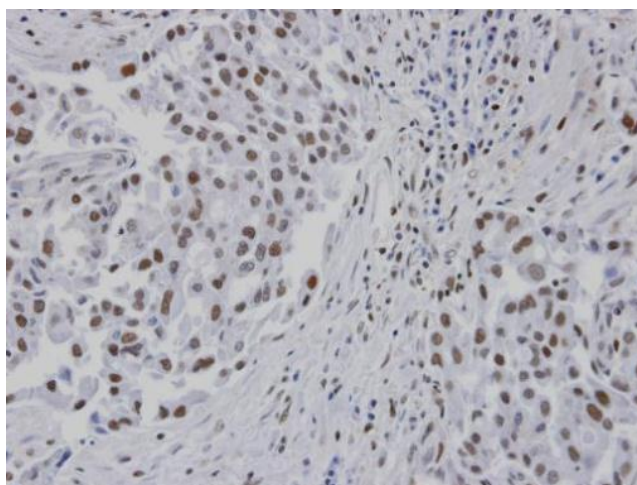


[View online »](#)

Product images:



RPA14 antibody detects RPA14 protein by Western blot analysis. A. 30 ug 293T whole cell lysate/extract. 15 % SDS-PAGE. RPA14 antibody (TA308830) dilution: 1:1000



Immunohistochemical analysis of paraffin-embedded lung CA patient tumor, using RPA 14 kDa subunit (TA308830) antibody at 1:100 dilution.