

Product datasheet for **TA308828**

AP1B1 Rabbit Polyclonal Antibody

Product data:

Product Type:	Primary Antibodies
Applications:	WB
Recommended Dilution:	WB:1:500-1:3000
Reactivity:	Human, Mouse (Predicted: Bovine)
Host:	Rabbit
Isotype:	IgG
Clonality:	Polyclonal
Immunogen:	Recombinant fragment corresponding to a region within amino acids 384 and 609 of beta-Adaptin (Uniprot ID#Q10567)
Formulation:	0.1M Tris, 0.1M Glycine, 10% Glycerol (pH7). 0.01% Thimerosal was added as a preservative.
Concentration:	lot specific
Purification:	Purified by antigen-affinity chromatography.
Conjugation:	Unconjugated
Storage:	Store at -20°C as received.
Stability:	Stable for 12 months from date of receipt.
Predicted Protein Size:	105 kDa
Gene Name:	adaptor related protein complex 1 beta 1 subunit
Database Link:	NP_001118 Entrez Gene 11764 Mouse Entrez Gene 162 Human Q10567
Background:	Adaptor protein complex 1 is found at the cytoplasmic face of coated vesicles located at the Golgi complex, where it mediates both the recruitment of clathrin to the membrane and the recognition of sorting signals within the cytosolic tails of transmembrane receptors. This complex is a heterotetramer composed of two large, one medium, and one small adaptin subunit. The protein encoded by this gene serves as one of the large subunits of this complex and is a member of the adaptin protein family. This gene is a candidate meningioma gene. Two transcript variants encoding different isoforms have been found for this gene, and variants utilizing alternative polyadenylation signals exist. [provided by RefSeq]



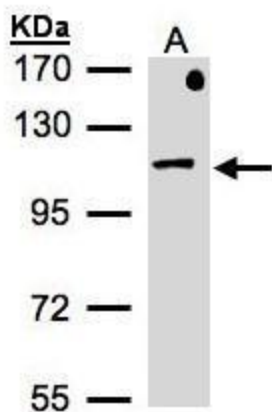
[View online »](#)

Synonyms: ADTB1; AP105A; BAM22; CLAPB2

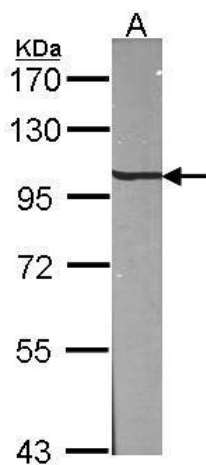
Note: Seq homology of immunogen across species: Bovine (100%)

Protein Pathways: Lysosome

Product images:



Sample (30 ug of whole cell lysate). A: MOLT4.
7.5% SDS PAGE. TA308828 diluted at 1:500



Sample (30 ug of whole cell lysate). A: NIH-3T3.
7.5% SDS PAGE. TA308828 diluted at 1:1000.