

Product datasheet for **TA308826**

BLNK Rabbit Polyclonal Antibody

Product data:

Product Type:	Primary Antibodies
Applications:	IF, WB
Recommended Dilution:	ICC/IF:1:100-1:1000; WB:1:500-1:3000
Reactivity:	Human (Predicted: Mouse, Rat, Bovine)
Host:	Rabbit
Isotype:	IgG
Clonality:	Polyclonal
Immunogen:	Synthetic peptide corresponding to a region within amino acids 394 and 456 of BLNK (Uniprot ID#Q8WV28)
Formulation:	1XPBS, 40% Glycerol (pH7). 0.01% Thimerosal was added as a preservative.
Concentration:	lot specific
Purification:	Purified by antigen-affinity chromatography.
Conjugation:	Unconjugated
Storage:	Store at -20°C as received.
Stability:	Stable for 12 months from date of receipt.
Predicted Protein Size:	50 kDa
Gene Name:	B-cell linker
Database Link:	NP_001107566 Entrez Gene 17060 Mouse Entrez Gene 499356 Rat Entrez Gene 29760 Human Q8WV28



[View online »](#)

Background: This gene encodes a cytoplasmic linker or adaptor protein that plays a critical role in B cell development. This protein bridges B cell receptor-associated kinase activation with downstream signaling pathways, thereby affecting various biological functions. The phosphorylation of five tyrosine residues is necessary for this protein to nucleate distinct signaling effectors following B cell receptor activation. Mutations in this gene cause hypoglobulinemia and absent B cells, a disease in which the pro- to pre-B-cell transition is developmentally blocked. Deficiency in this protein has also been shown in some cases of pre-B acute lymphoblastic leukemia. Alternatively spliced transcript variants encoding different isoforms have been found for this gene. [provided by RefSeq]

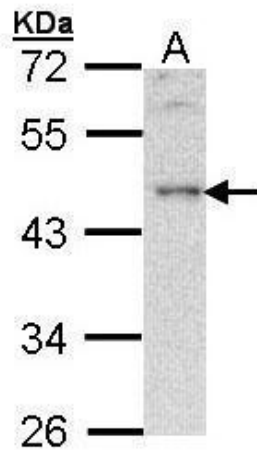
Synonyms: AGM4; BASH; bca; BLNK-S; LY57; SLP-65; SLP65

Note: Seq homology of immunogen across species: Mouse (100%), Rat (100%), Bovine (100%)

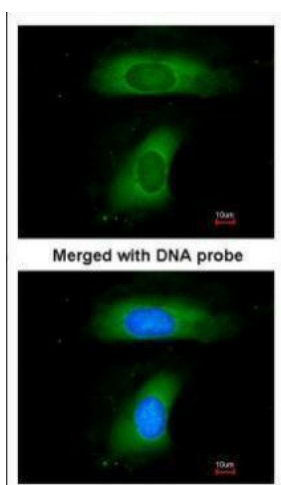
Protein Families: Druggable Genome

Protein Pathways: B cell receptor signaling pathway, Primary immunodeficiency

Product images:



Sample (30 ug of whole cell lysate). A: HeLa. 10% SDS PAGE. TA308826 diluted at 1:500.



Immunofluorescence analysis of paraformaldehyde-fixed HeLa, using B-cell linker protein (TA308826) antibody at 1:200 dilution.