

## Product datasheet for **TA308825**

### IKK beta (IKBKB) Rabbit Polyclonal Antibody

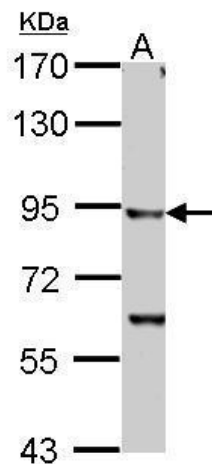
#### Product data:

Product Type:	Primary Antibodies
Applications:	IF, IHC, WB
Recommended Dilution:	ICC/IF:1:100-1:1000; IHC:1:100-1:1000; WB:1:500-1:10000
Reactivity:	Human (Predicted: Rhesus Monkey)
Host:	Rabbit
Isotype:	IgG
Clonality:	Polyclonal
Immunogen:	Recombinant fragment corresponding to a region within amino acids 493 and 739 of IKK beta (Uniprot ID#O14920)
Formulation:	0.1M Tris, 0.1M Glycine, 10% Glycerol (pH7). 0.01% Thimerosal was added as a preservative.
Concentration:	lot specific
Purification:	Purified by antigen-affinity chromatography.
Conjugation:	Unconjugated
Storage:	Store at -20°C as received.
Stability:	Stable for 12 months from date of receipt.
Predicted Protein Size:	87 kDa
Gene Name:	inhibitor of kappa light polypeptide gene enhancer in B-cells, kinase beta
Database Link:	<a href="#">NP_001547</a> <a href="#">Entrez Gene 3551 Human O14920</a>

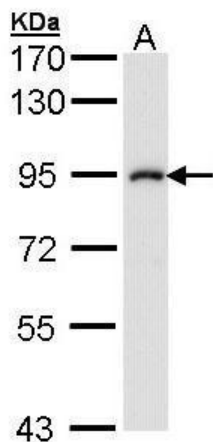


[View online »](#)

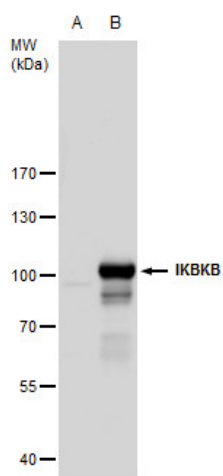
<b>Background:</b>	NFKB1 (MIM 164011) or NFKB2 (MIM 164012) is bound to REL (MIM 164910), RELA (MIM 164014), or RELB (MIM 604758) to form the NFKB complex. The NFKB complex is inhibited by I-kappa-B proteins (NFKBIA, MIM 164008, or NFKBIB, MIM 604495), which inactivate NF-kappa-B by trapping it in the cytoplasm. Phosphorylation of serine residues on the I-kappa-B proteins by kinases (IKBKA, MIM 600664, or IKKBK) marks them for destruction via the ubiquitination pathway, thereby allowing activation of the NF-kappa-B complex. Activated NFKB complex translocates into the nucleus and binds DNA at kappa-B-binding motifs such as 5-prime GGGRNNYYCC 3-prime or 5-prime HGGARNYYCC 3-prime (where H is A, C, or T; R is an A or G purine; and Y is a C or T pyrimidine). [supplied by OMIM]
<b>Synonyms:</b>	IKK-beta; IKK2; IKKB; IMD15; NFKBIKB
<b>Note:</b>	Seq homology of immunogen across species: Rhesus Monkey (100%)
<b>Protein Families:</b>	Druggable Genome, Protein Kinase, Transcription Factors
<b>Protein Pathways:</b>	Acute myeloid leukemia, Adipocytokine signaling pathway, Apoptosis, B cell receptor signaling pathway, Chemokine signaling pathway, Chronic myeloid leukemia, Cytosolic DNA-sensing pathway, Epithelial cell signaling in Helicobacter pylori infection, Insulin signaling pathway, MAPK signaling pathway, Neurotrophin signaling pathway, NOD-like receptor signaling pathway, Pancreatic cancer, Pathways in cancer, Prostate cancer, RIG-I-like receptor signaling pathway, Small cell lung cancer, T cell receptor signaling pathway, Toll-like receptor signaling pathway, Type II diabetes mellitus

**Product images:**

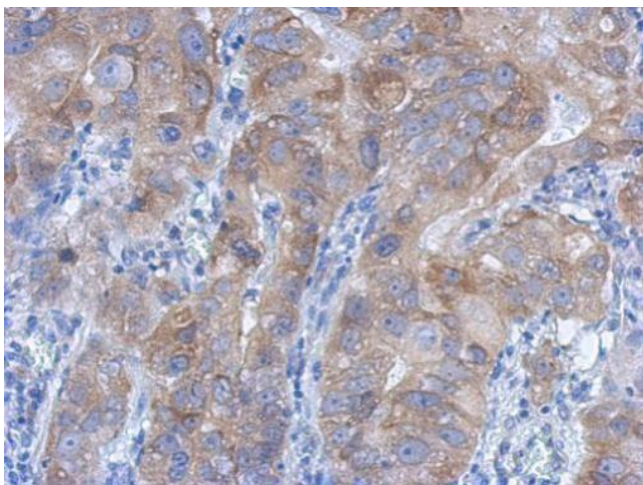
IKK beta antibody detects IKKBK protein by Western blot analysis. A. 30 ug PC-12 whole cell lysate/extract. 7.5 % SDS-PAGE. IKK beta antibody (TA308825) dilution: 1:1000



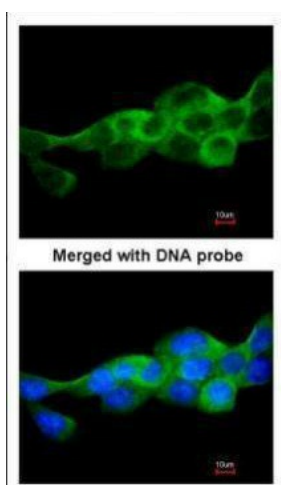
Sample (30 ug of whole cell lysate). A: A431. 7.5% SDS PAGE. TA308825 diluted at 1:1000.



IKK beta antibody detects IKK beta protein by western blot analysis. A. 30 ug 293T whole cell extract. B. 30 ug whole cell extract of DDDDK-human IKBKB-transfected 293T cells. 7.5 % SDS-PAGE. IKK beta antibody (TA308825) dilution: 1:5000



Immunohistochemical analysis of paraffin-embedded Colon ca, using IKK beta (TA308825) antibody at 1:500 dilution.



Immunofluorescence analysis of paraformaldehyde-fixed A431, using IKK beta (TA308825) antibody at 1:200 dilution.