

## Product datasheet for **TA308824**

### IL16 Rabbit Polyclonal Antibody

#### Product data:

Product Type:	Primary Antibodies
Applications:	IF, WB
Recommended Dilution:	ICC/IF:1:100-1:1000; WB:1:500-1:3000
Reactivity:	Human (Predicted: Pig, Chimpanzee, Bovine, Rhesus Monkey)
Host:	Rabbit
Isotype:	IgG
Clonality:	Polyclonal
Immunogen:	Synthetic peptide corresponding to a region within amino acids 1268 and 1332 of IL16 (Uniprot ID#Q14005)
Formulation:	0.1M Tris, 0.1M Glycine, 10% Glycerol (pH7). 0.01% Thimerosal was added as a preservative.
Concentration:	lot specific
Purification:	Purified by antigen-affinity chromatography.
Conjugation:	Unconjugated
Storage:	Store at -20°C as received.
Stability:	Stable for 12 months from date of receipt.
Predicted Protein Size:	142 kDa
Gene Name:	interleukin 16
Database Link:	<a href="#">NP_757366</a> <a href="#">Entrez Gene 3603 Human Q14005</a>
Background:	The protein encoded by this gene is a pleiotropic cytokine that functions as a chemoattractant, a modulator of T cell activation, and an inhibitor of HIV replication. The signaling process of this cytokine is mediated by CD4. The product of this gene undergoes proteolytic processing, which is found to yield two functional proteins. The cytokine function is exclusively attributed to the secreted C-terminal peptide, while the N-terminal product may play a role in cell cycle control. Caspase 3 is reported to be involved in the proteolytic processing of this protein. Two transcript variants encoding different isoforms have been found for this gene. [provided by RefSeq]



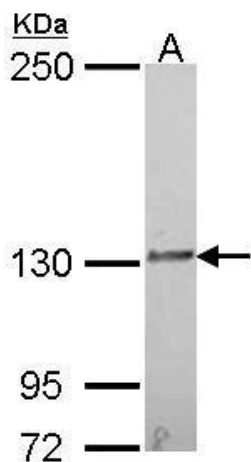
[View online »](#)

**Synonyms:** LCF; NIL16; prIL-16; PRIL16

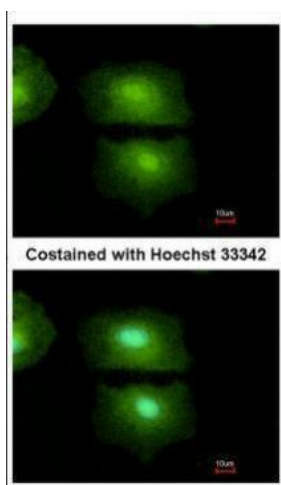
**Note:** Seq homology of immunogen across species: Pig (86%), Rhesus Monkey (87%), Chimpanzee (100%), Bovine (86%)

**Protein Families:** Druggable Genome, Secreted Protein

**Product images:**



Sample (30 ug of whole cell lysate). A: A549. 5% SDS PAGE. IL16 antibody. TA308824 diluted at 1:1000.



Immunofluorescence analysis of methanol-fixed A549, using IL16 (TA308824) antibody at 1:500 dilution.