

Product datasheet for **TA308823**

DNA Ligase III (LIG3) Rabbit Polyclonal Antibody

Product data:

Product Type:	Primary Antibodies
Applications:	IF, IHC, WB
Recommended Dilution:	ICC/IF:1:100-1:1000; IHC:1:100-1:1000; WB:1:500-1:3000
Reactivity:	Human
Host:	Rabbit
Isotype:	IgG
Clonality:	Polyclonal
Immunogen:	Recombinant fragment corresponding to a region within amino acids 116 and 433 of DNA ligase 3 (Uniprot ID#P49916)
Formulation:	1XPBS, 20% Glycerol (pH7). 0.025% ProClin 300 was added as a preservative.
Concentration:	lot specific
Purification:	Purified by antigen-affinity chromatography.
Conjugation:	Unconjugated
Storage:	Store at -20°C as received.
Stability:	Stable for 12 months from date of receipt.
Predicted Protein Size:	113 kDa
Gene Name:	DNA ligase 3
Database Link:	NP_002302 Entrez Gene 3980 Human P49916
Background:	This gene is a member of the DNA ligase family. Each member of this family encodes a protein that catalyzes the joining of DNA ends but they each have a distinct role in DNA metabolism. The protein encoded by this gene is involved in excision repair and is located in both the mitochondria and nucleus, with translation initiation from the upstream start codon allowing for transport to the mitochondria and translation initiation from a downstream start codon allowing for transport to the nucleus. Additionally, alternate transcriptional splice variants, encoding different isoforms, have been characterized. [provided by RefSeq]
Synonyms:	LIG2

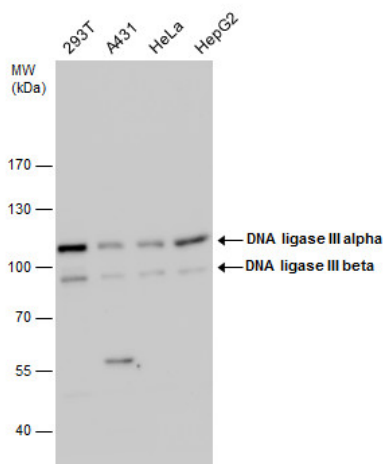


[View online »](#)

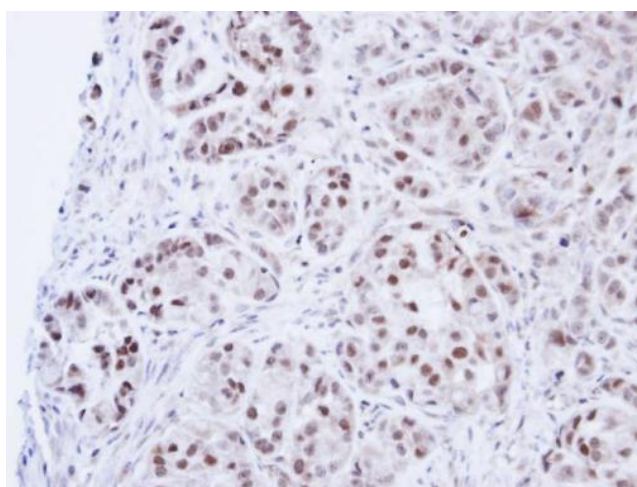
Protein Families: Druggable Genome

Protein Pathways: Base excision repair

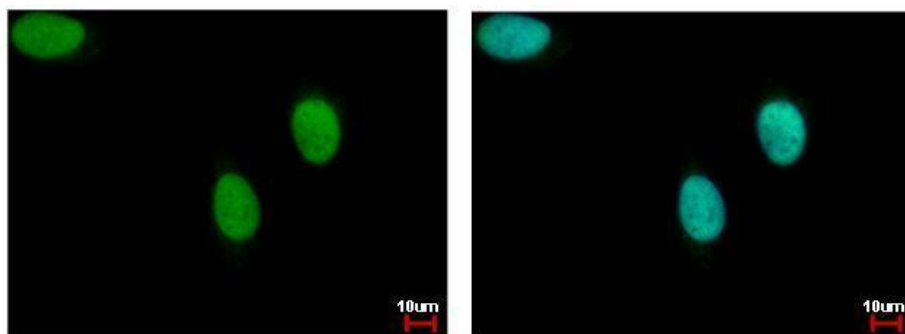
Product images:



DNA ligase III antibody detects DNA ligase III protein by western blot analysis. Various whole cell extracts (30 ug) were separated by 7.5% SDS-PAGE, and the membrane was blotted with DNA ligase III antibody (TA308823) diluted by 1:1000.



Immunohistochemical analysis of paraffin-embedded A549 Xenograft, using DNA ligase 3 (TA308823) antibody at 1:100 dilution.



DNA ligase III antibody detects LIG3 protein at nucleus by immunofluorescent analysis. Sample: HeLa cells were fixed in 4% paraformaldehyde at RT for 15 min. Green: LIG3 protein stained by DNA ligase III antibody (TA308823) diluted at 1:500. Blue: Hoechst