

## Product datasheet for **TA308822**

### Protein S (PROS1) Rabbit Polyclonal Antibody

#### Product data:

Product Type:	Primary Antibodies
Applications:	IF, IHC, WB
Recommended Dilution:	ICC/IF:1:100-1:1000; IHC:1:100-1:1000; WB:1:500-1:3000
Reactivity:	Human
Host:	Rabbit
Isotype:	IgG
Clonality:	Polyclonal
Immunogen:	Recombinant fragment corresponding to a region within amino acids 209 and 477 of Protein S (Uniprot ID#P07225)
Formulation:	0.1M Tris, 0.1M Glycine, 10% Glycerol (pH7). 0.01% Thimerosal was added as a preservative.
Concentration:	lot specific
Purification:	Purified by antigen-affinity chromatography.
Conjugation:	Unconjugated
Storage:	Store at -20°C as received.
Stability:	Stable for 12 months from date of receipt.
Predicted Protein Size:	75 kDa
Gene Name:	protein S (alpha)
Database Link:	<a href="#">NP_000304</a> <a href="#">Entrez Gene 5627 Human P07225</a>
Background:	This gene encodes a vitamin K-dependent plasma protein that functions as a cofactor for the anticoagulant protease, activated protein C (APC) to inhibit blood coagulation. It is found in plasma in both a free, functionally active form and also in an inactive form complexed with C4b-binding protein. Mutations in this gene result in autosomal dominant hereditary thrombophilia. An inactive pseudogene of this locus is located at an adjacent region on chromosome 3. [provided by RefSeq]
Synonyms:	PROS; PS21; PS22; PS23; PS24; PS25; PSA; THPH5; THPH6

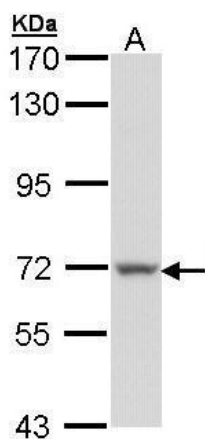


[View online »](#)

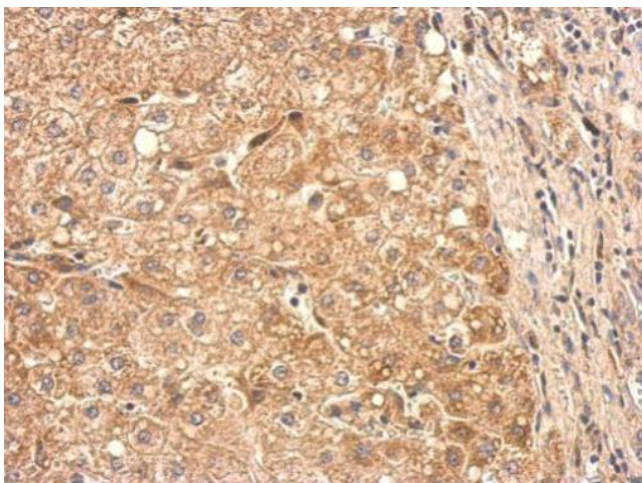
Protein Families: Druggable Genome, Secreted Protein

Protein Pathways: Complement and coagulation cascades

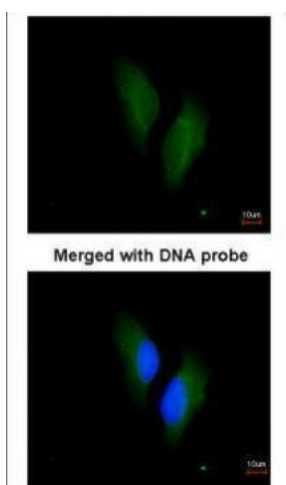
### Product images:



Sample (30 ug of whole cell lysate). A: 293T. 7.5% SDS PAGE. TA308822 diluted at 1:1000.



Protein S alpha antibody [N2C2], Internal detects PROS1 protein at cytosol on hepatoma by immunohistochemical analysis. Sample: Paraffin-embedded hepatoma. Protein S alpha antibody [N2C2], Internal (TA308822) dilution: 1:200.



Immunofluorescence analysis of paraformaldehyde-fixed HeLa, using protein S (alpha) (TA308822) antibody at 1:200 dilution.