

Product datasheet for **TA308820**

NQO1 Rabbit Polyclonal Antibody

Product data:

Product Type:	Primary Antibodies
Applications:	IF, IHC, WB
Recommended Dilution:	ICC/IF:1:100-1:1000; IHC:1:100-1:1000; WB:1:500-1:3000
Reactivity:	Human (Predicted: Pig, Bovine, Guinea Pig, Rhesus Monkey)
Host:	Rabbit
Isotype:	IgG
Clonality:	Polyclonal
Immunogen:	Synthetic peptide corresponding to a region within amino acids 213 and 274 of NQO1 (Uniprot ID#P15559)
Formulation:	1XPBS, 20% Glycerol (pH7). 0.025% ProClin 300 was added as a preservative.
Concentration:	lot specific
Purification:	Purified by antigen-affinity chromatography.
Conjugation:	Unconjugated
Storage:	Store at -20°C as received.
Stability:	Stable for 12 months from date of receipt.
Predicted Protein Size:	31 kDa
Gene Name:	NAD(P)H quinone dehydrogenase 1
Database Link:	NP_001020605 Entrez Gene 1728 Human P15559



[View online »](#)

Background:

This gene is a member of the NAD(P)H dehydrogenase (quinone) family and encodes a cytoplasmic 2-electron reductase. This FAD-binding protein forms homodimers and reduces quinones to hydroquinones. This protein's enzymatic activity prevents the one electron reduction of quinones that results in the production of radical species. Mutations in this gene have been associated with tardive dyskinesia (TD), an increased risk of hematotoxicity after exposure to benzene, and susceptibility to various forms of cancer. Altered expression of this protein has been seen in many tumors and is also associated with Alzheimer's disease (AD). Alternate transcriptional splice variants, encoding different isoforms, have been characterized. [provided by RefSeq]

Synonyms:

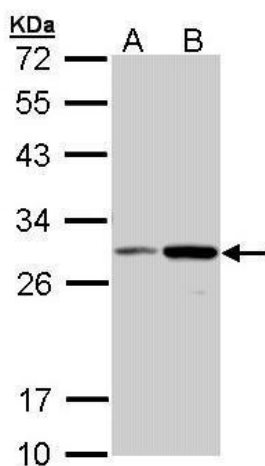
DHQU; DIA4; DTD; NMOR1; NMORI; QR1

Note:

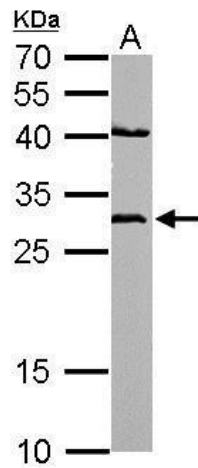
Seq homology of immunogen across species: Pig (92%), Rhesus Monkey (100%), Bovine (83%), Guinea pig (100%)

Protein Families:

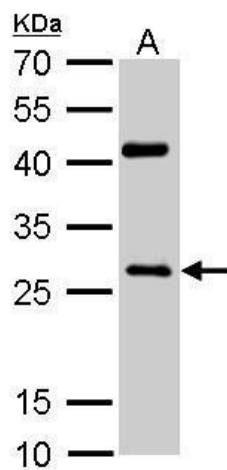
Druggable Genome

Product images:

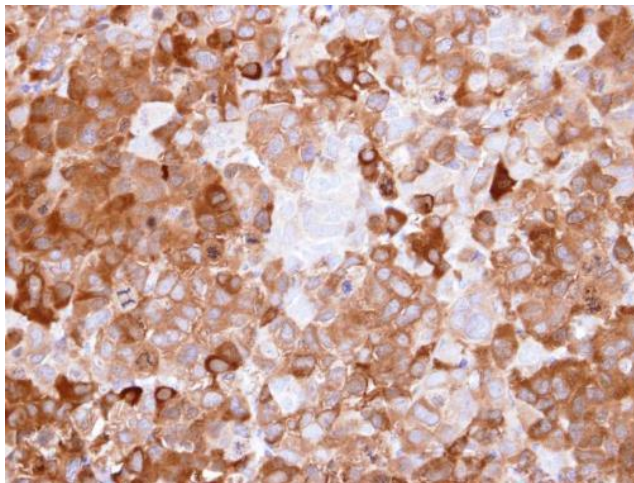
Sample (30 ug of whole cell lysate). A: Molt-4. B: Raji. 12% SDS PAGE. TA308820 diluted at 1:1000.



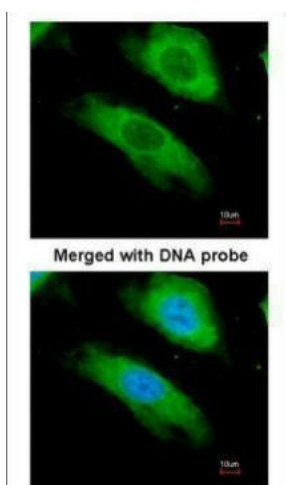
NQO1 antibody [C2C3], C-term detects NQO1 protein by Western blot analysis. A. 50 ug mouse heart lysate/extract. 12 % SDS-PAGE. NQO1 antibody [C2C3], C-term (TA308820) dilution: 1:500



NQO1 antibody [C2C3], C-term detects NQO1 protein by Western blot analysis. A. 50 ug rat heart lysate/extract. 12 % SDS-PAGE. NQO1 antibody [C2C3], C-term (TA308820) dilution: 1:500



Immunohistochemical analysis of paraffin-embedded CL1-0 xenograft, using NQO1 (TA308820) antibody at 1:500 dilution.



Immunofluorescence analysis of paraformaldehyde-fixed HeLa, using NQO1 (TA308820) antibody at 1:200 dilution.