

Product datasheet for **TA308819**

FTCD Rabbit Polyclonal Antibody

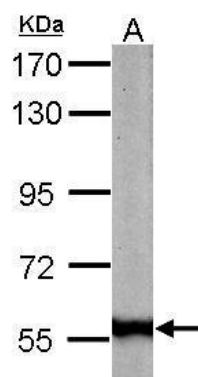
Product data:

Product Type:	Primary Antibodies
Applications:	IHC, WB
Recommended Dilution:	IHC:1:100-1:1000; WB:1:500-1:3000
Reactivity:	Human, Mouse (Predicted: Pig, Rat, Bovine)
Host:	Rabbit
Isotype:	IgG
Clonality:	Polyclonal
Immunogen:	Recombinant fragment corresponding to a region within amino acids 1 and 251 of FTCD (Uniprot ID#O95954)
Formulation:	0.1M Tris, 0.1M Glycine, 10% Glycerol (pH7). 0.01% Thimerosal was added as a preservative.
Purification:	Purified by antigen-affinity chromatography.
Conjugation:	Unconjugated
Storage:	Store at -20°C as received.
Stability:	Stable for 12 months from date of receipt.
Predicted Protein Size:	59 kDa
Gene Name:	formimidoyltransferase cyclodeaminase
Database Link:	NP_996848 Entrez Gene 14317 Mouse Entrez Gene 89833 Rat Entrez Gene 10841 Human O95954
Background:	FTCD is a bifunctional enzyme that channels 1-carbon units from formiminoglutamate, a metabolite of the histidine degradation pathway, to the folate pool. [supplied by OMIM]
Synonyms:	LCHC1
Note:	Seq homology of immunogen across species: Pig (84%), Rat (89%), Bovine (88%)
Protein Pathways:	Histidine metabolism, Metabolic pathways, One carbon pool by folate

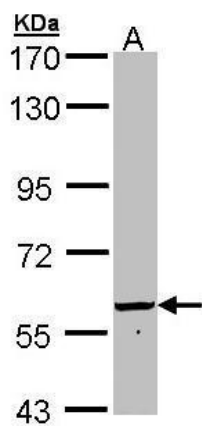


[View online »](#)

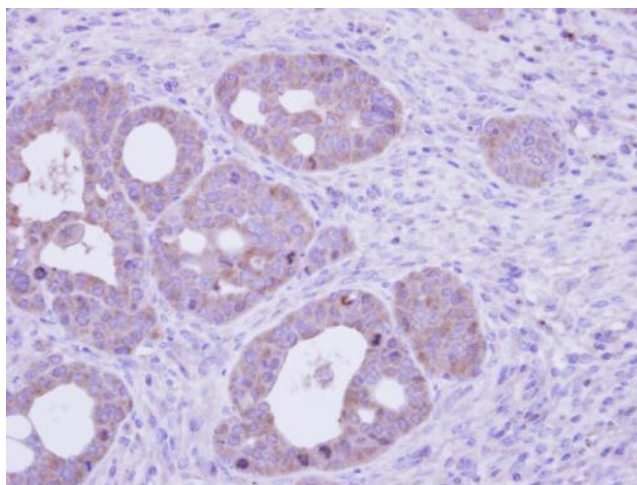
Product images:



Sample (50 ug of whole cell lysate). A: mouse liver. 7.5% SDS PAGE. TA308819 diluted at 1:1000.



Sample (30 ug of whole cell lysate). A: Hep G2. 7.5% SDS PAGE. TA308819 diluted at 1:1000



Immunohistochemical analysis of paraffin-embedded NCIN87 xenograft, using FTCD (TA308819) antibody at 1:100 dilution.