

## Product datasheet for **TA308818**

### CAD Rabbit Polyclonal Antibody

#### Product data:

Product Type:	Primary Antibodies
Applications:	IHC, WB
Recommended Dilution:	IHC:1:100-1:1000; WB:1:500-1:3000
Reactivity:	Human
Host:	Rabbit
Isotype:	IgG
Clonality:	Polyclonal
Immunogen:	Recombinant fragment corresponding to a region within amino acids 1625 and 1930 of CAD (Uniprot ID#P27708)
Formulation:	1XPBS, 10% Glycerol (pH7). 0.01% Thimerosal was added as a preservative.
Concentration:	lot specific
Purification:	Purified by antigen-affinity chromatography.
Conjugation:	Unconjugated
Storage:	Store at -20°C as received.
Stability:	Stable for 12 months from date of receipt.
Predicted Protein Size:	243 kDa
Gene Name:	carbamoyl-phosphate synthetase 2, aspartate transcarbamylase, and dihydroorotase
Database Link:	<a href="#">NP_004332</a> <a href="#">Entrez Gene 790 Human P27708</a>

**Background:** The de novo synthesis of pyrimidine nucleotides is required for mammalian cells to proliferate. This gene encodes a trifunctional protein which is associated with the enzymatic activities of the first 3 enzymes in the 6-step pathway of pyrimidine biosynthesis: carbamoylphosphate synthetase (CPS II), aspartate transcarbamoylase, and dihydroorotase. This protein is regulated by the mitogen-activated protein kinase (MAPK) cascade, which indicates a direct link between activation of the MAPK cascade and de novo biosynthesis of pyrimidine nucleotides. [provided by RefSeq]



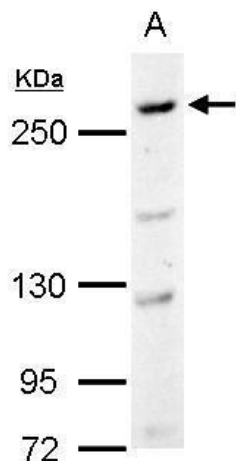
[View online »](#)

**Synonyms:** and dihydroorotase; aspartate transcarbamylase; CAD trifunctional protein; carbamoyl-phosphate synthetase 2; carbamoylphosphate synthetase 2; dihydroorotase; multifunctional protein CAD

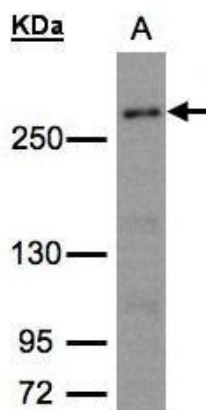
**Protein Families:** Druggable Genome

**Protein Pathways:** Alanine, aspartate and glutamate metabolism, Metabolic pathways, Pyrimidine metabolism

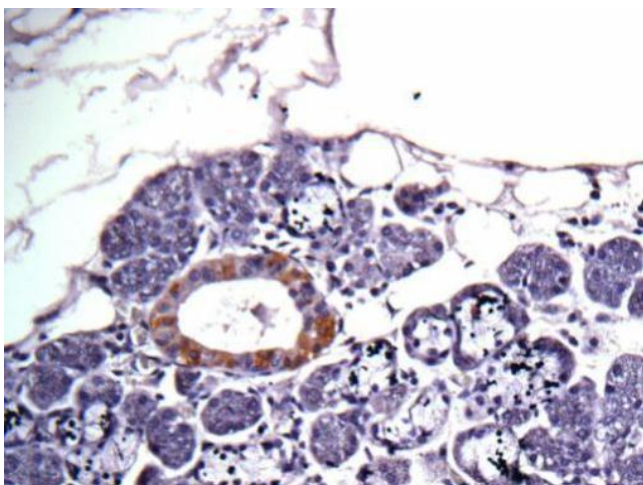
**Product images:**



CAD antibody [C2C3], C-term detects CAD protein by Western blot analysis. A. 30 ug C2C12 whole cell lysate/extract. 5 % SDS-PAGE. CAD antibody [C2C3], C-term (TA308818) dilution: 1:1000



Sample (30ug whole cell lysate). A:293T whole cell lysate. 5% SDS PAGE. TA308818 diluted at 1:1500



Immunohistochemical analysis of Salivary gland cancer, using CAD (TA308818) antibody at 1:100 dilution.