

## Product datasheet for **TA308814**

### SHARP2 (BHLHE40) Rabbit Polyclonal Antibody

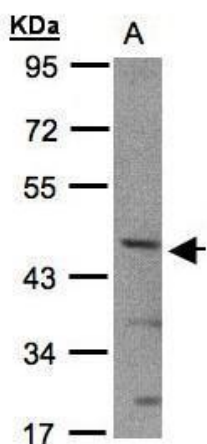
#### Product data:

Product Type:	Primary Antibodies
Applications:	IF, WB
Recommended Dilution:	ICC/IF:1:100-1:1000; WB:1:500-1:3000
Reactivity:	Human (Predicted: Mouse, Rat, Bovine)
Host:	Rabbit
Isotype:	IgG
Clonality:	Polyclonal
Immunogen:	Synthetic peptide corresponding to a region within amino acids 1 and 81 of SHARP2 (Uniprot ID#O14503)
Formulation:	0.1M Tris, 0.1M Glycine, 10% Glycerol (pH7). 0.01% Thimerosal was added as a preservative.
Concentration:	lot specific
Purification:	Purified by antigen-affinity chromatography.
Conjugation:	Unconjugated
Storage:	Store at -20°C as received.
Stability:	Stable for 12 months from date of receipt.
Predicted Protein Size:	46 kDa
Gene Name:	basic helix-loop-helix family member e40
Database Link:	<a href="#">NP_003661</a> <a href="#">Entrez Gene 20893 MouseEntrez Gene 79431 RatEntrez Gene 8553 Human O14503</a>
Background:	This gene encodes a basic helix-loop-helix protein expressed in various tissues. Expression in the chondrocytes is responsive to the addition of Bt2cAMP. The encoded protein is believed to be involved in the control of cell differentiation. [provided by RefSeq]
Synonyms:	BHLHB2; DEC1; HLHB2; SHARP-2; STRA13; Stra14
Note:	Seq homology of immunogen across species: Mouse (100%), Rat (100%), Bovine (100%)
Protein Families:	Transcription Factors
Protein Pathways:	Circadian rhythm - mammal

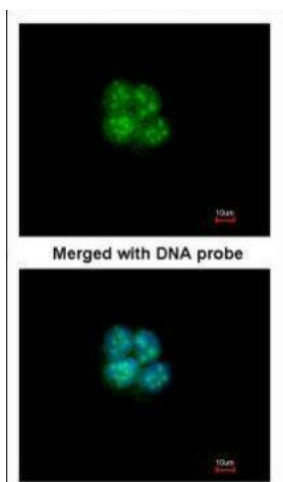


[View online »](#)

Product images:



Sample (30 ug whole cell lysate). A:293T. 10% SDS PAGE. TA308814 diluted at 1:1000



Immunofluorescence analysis of paraformaldehyde-fixed A431, using SHARP2 (TA308814) antibody at 1:200 dilution.