

Product datasheet for **TA308812**

DDB1 Rabbit Polyclonal Antibody

Product data:

Product Type:	Primary Antibodies
Applications:	IF, IHC, IP, WB
Recommended Dilution:	ICC/IF:1:100-1:1000; IHC:1:100-1:1000; WB:1:1000-1:10000
Reactivity:	Human, Mouse (Predicted: Bovine)
Host:	Rabbit
Isotype:	IgG
Clonality:	Polyclonal
Immunogen:	Recombinant fragment corresponding to a region within amino acids 749 and 1140 of DDB1 (Uniprot ID#Q16531)
Formulation:	1XPBS, 1% BSA, 20% Glycerol (pH7). 0.025% ProClin 300 was added as a preservative.
Concentration:	lot specific
Purification:	Purified by antigen-affinity chromatography.
Conjugation:	Unconjugated
Storage:	Store at -20°C as received.
Stability:	Stable for 12 months from date of receipt.
Predicted Protein Size:	127 kDa
Gene Name:	damage specific DNA binding protein 1
Database Link:	NP_001914 Entrez Gene 13194 Mouse Entrez Gene 1642 Human Q16531

Background: This gene encodes the large subunit of DNA damage-binding protein which is a heterodimer composed of a large and a small subunit. This protein functions in nucleotide-excision repair. Its defective activity causes the repair defect in the patients with xeroderma pigmentosum complementation group E (XPE). However, it remains for mutation analysis to demonstrate whether the defect in XPE patients is in this gene or the gene encoding the small subunit. In addition, Best vitelliform macular dystrophy is mapped to the same region as this gene on 11q, but no sequence alternations of this gene are demonstrated in Best disease patients. [provided by RefSeq]



[View online »](#)

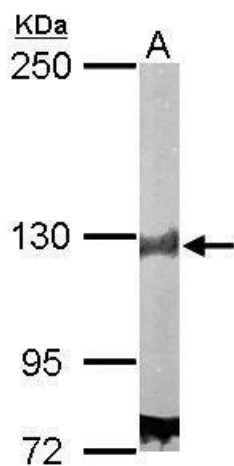
Synonyms: DDBA; UV-DDB1; XAP1; XPCE; XPE; XPE-BF

Note: Seq homology of immunogen across species: Bovine (100%)

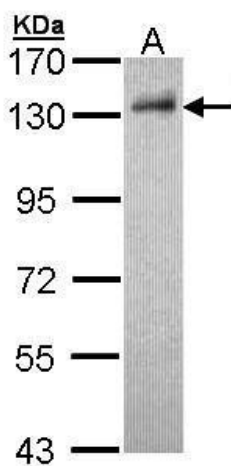
Protein Families: Druggable Genome

Protein Pathways: Nucleotide excision repair, Ubiquitin mediated proteolysis

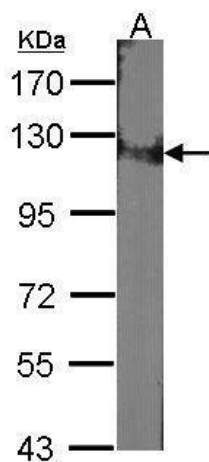
Product images:



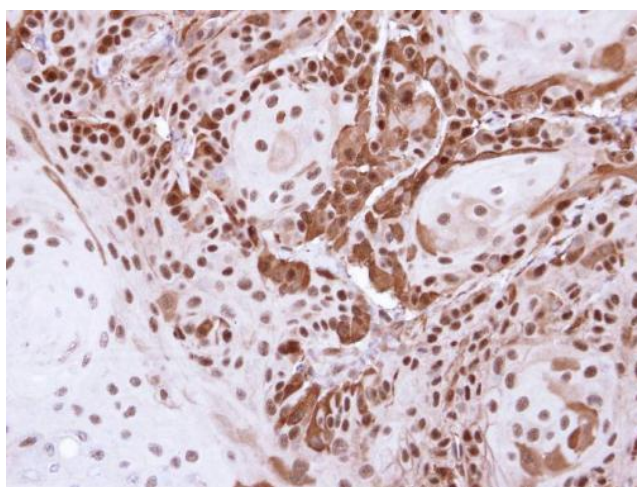
Sample (50 ug of whole cell lysate). A: Mouse brain. 5% SDS PAGE. TA308812 diluted at 1:5000.



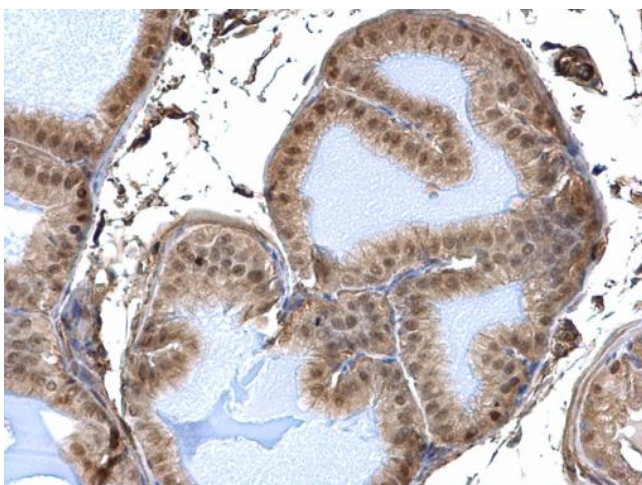
Sample (30 ug of whole cell lysate). A: Hep G2. 7.5% SDS PAGE. TA308812 diluted at 1:1000.



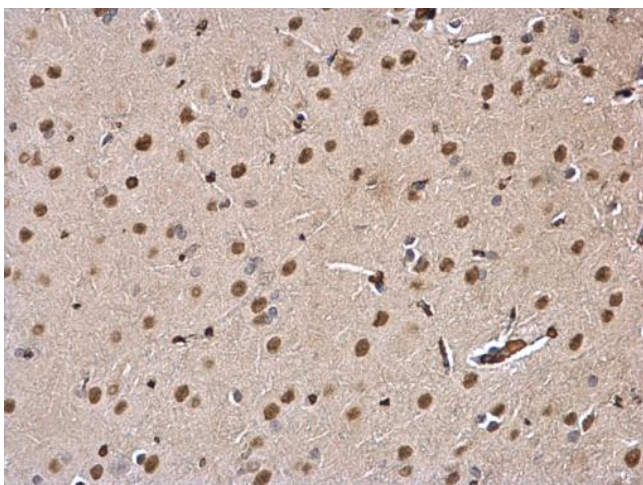
Sample (30 ug of whole cell lysate). A:NIH-3T3. 7.5% SDS PAGE. TA308812 diluted at 1:1000.



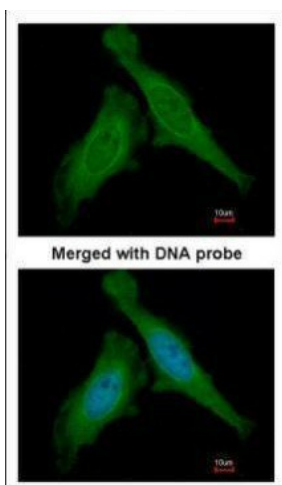
Immunohistochemical analysis of paraffin-embedded Cal27 Xenograft, using DDB1 (TA308812) antibody at 1:500 dilution.



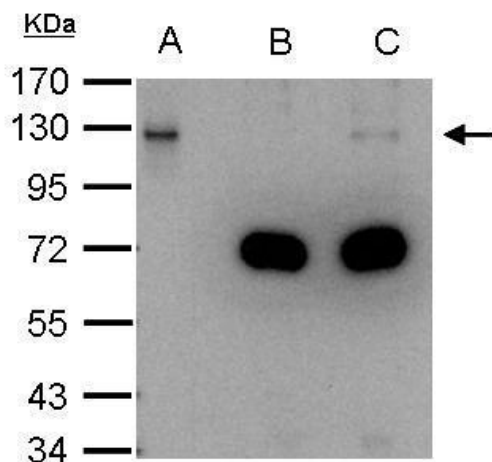
DDB1 antibody detects DDB1 protein at nucleus and cytosol on mouse prostate by immunohistochemical analysis. Sample: Paraffin-embedded mouse prostate. DDB1 antibody (TA308812) dilution: 1:500.



DDB1 antibody detects DDB1 protein at nucleus and cytosol on rat fore brain by immunohistochemical analysis. Sample: Paraffin-embedded rat fore brain. DDB1 antibody (TA308812) dilution: 1:500.



Immunofluorescence analysis of paraformaldehyde-fixed HeLa, using DDB1 (TA308812) antibody at 1:200 dilution.



DDB1 antibody immunoprecipitates DDB1 protein in IP experiments. IP Sample: 1000 ug HeLa whole cell lysate/extract A. 40 ug HeLa whole cell lysate/extract B. Control with 2.5 ug of preimmune rabbit IgG C. Immunoprecipitation of DDB1 protein by 2.5 ug of D