

Product datasheet for **TA308810**

SAFB Rabbit Polyclonal Antibody

Product data:

Product Type:	Primary Antibodies
Applications:	IF, IHC, WB
Recommended Dilution:	ICC/IF:1:100-1:1000; IHC:1:100-1:1000; WB:1:500-1:3000
Reactivity:	Human (Predicted: Bovine)
Host:	Rabbit
Isotype:	IgG
Clonality:	Polyclonal
Immunogen:	Recombinant fragment contain a sequence corresponding to a region within amino acids 476 and 695 of SAFB (Uniprot ID#Q15424)
Formulation:	0.1M Tris, 0.1M Glycine, 10% Glycerol (pH7). 0.01% Thimerosal was added as a preservative.
Concentration:	lot specific
Purification:	Purified by antigen-affinity chromatography.
Conjugation:	Unconjugated
Storage:	Store at -20°C as received.
Stability:	Stable for 12 months from date of receipt.
Predicted Protein Size:	103 kDa
Gene Name:	scaffold attachment factor B
Database Link:	NP_002958 Entrez Gene 6294 Human Q15424



[View online »](#)

Background:

This gene encodes a DNA-binding protein that has high specificity for scaffold or matrix attachment region DNA elements (S/MAR DNA). This protein is thought to be involved in attaching the base of chromatin loops to the nuclear matrix but there is conflicting evidence as to whether this protein is a component of chromatin or a nuclear matrix protein. Scaffold attachment factors are a specific subset of nuclear matrix proteins (NMP) that specifically bind to S/MAR. This encoded protein is thought to serve as a molecular base to assemble a 'transcriptosome complex' in the vicinity of actively transcribed genes. It is involved in the regulation of the heat shock protein 27 transcription and also can act as an estrogen receptor corepressor. This gene is a candidate gene for breast tumorigenesis. [provided by RefSeq]

Synonyms:

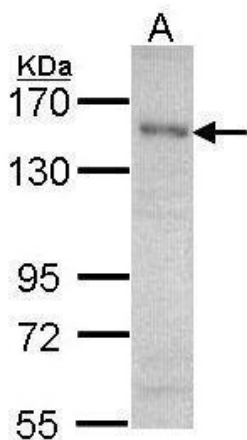
HAP; HET; SAB-B1; SAF-B; SAF-B1; SAFB1

Note:

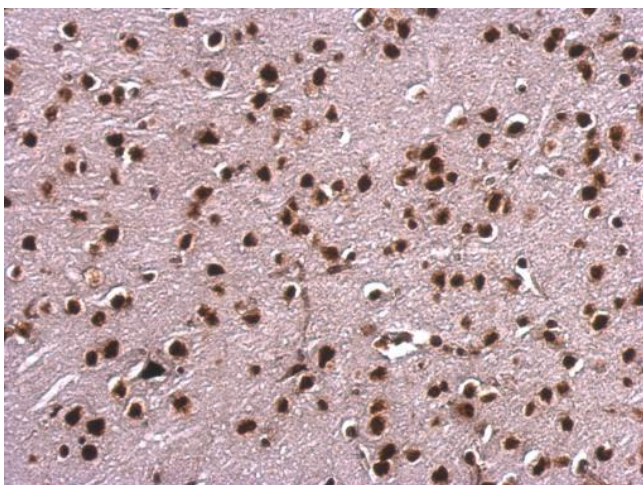
Seq homology of immunogen across species: Bovine (87%)

Protein Families:

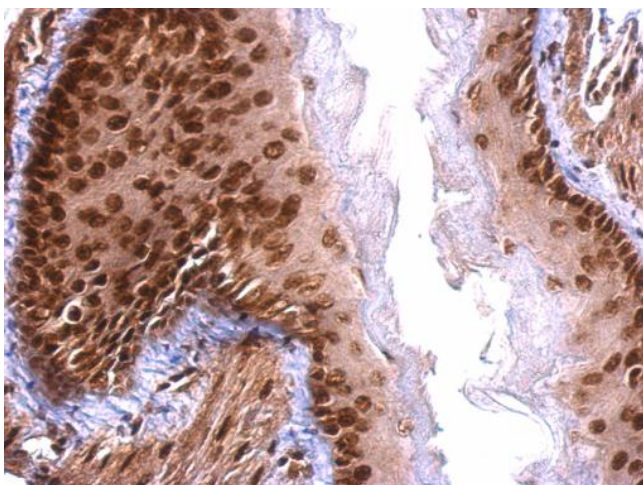
Druggable Genome, Transcription Factors

Product images:


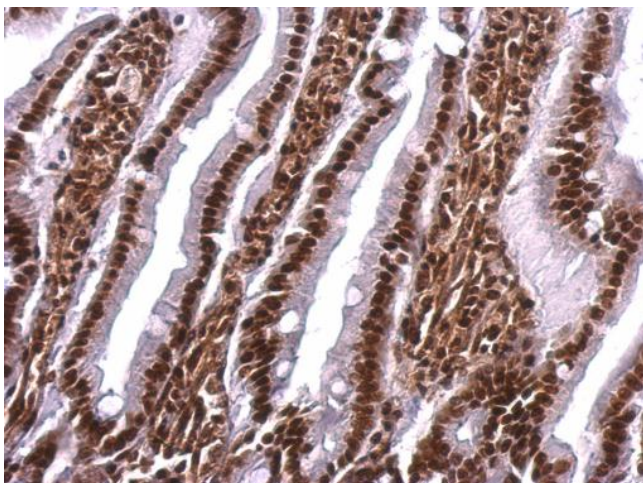
Sample (30 ug of whole cell lysate). A: A431. B: Hep G2. 7.5% SDS PAGE. TA308810 diluted at 1:1000.



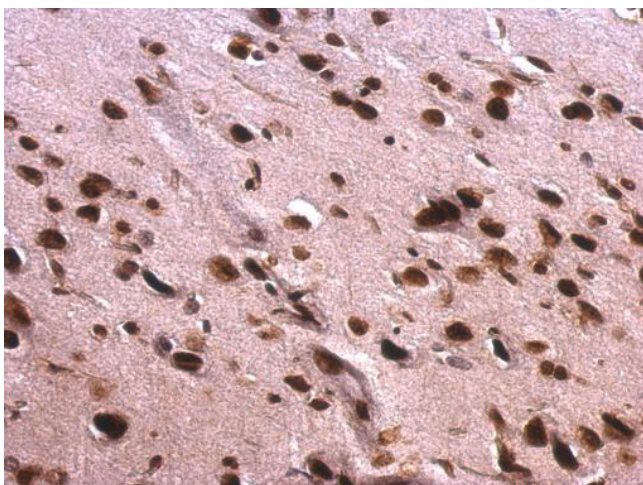
Scaffold attachment factor B1 antibody detects Scaffold attachment factor B1 protein at nucleus on mouse fore brain by immunohistochemical analysis. Sample: Paraffin-embedded mouse fore brain. Scaffold attachment factor B1 antibody (TA308810) dilution: 1:



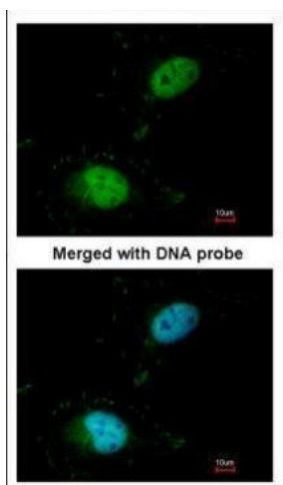
Scaffold attachment factor B1 antibody detects Scaffold attachment factor B1 protein at nucleus on mouse intestine by immunohistochemical analysis. Sample: Paraffin-embedded mouse esophagus. Scaffold attachment factor B1 antibody (TA308810) dilution: 1:50



Scaffold attachment factor B1 antibody detects Scaffold attachment factor B1 protein at nucleus on rat fore brain by immunohistochemical analysis. Sample: Paraffin-embedded mouse intestine. Scaffold attachment factor B1 antibody (TA308810) dilution: 1:500



Scaffold attachment factor B1 antibody detects Scaffold attachment factor B1 protein at nucleus on rat fore brain by immunohistochemical analysis. Sample: Paraffin-embedded rat fore brain. Scaffold attachment factor B1 antibody (TA308810) dilution: 1:500.



Immunofluorescence analysis of paraformaldehyde-fixed HeLa, using Scaffold attachment factor B1 (TA308810) antibody at 1:100 dilution.