

## Product datasheet for **TA308806**

### **GST3 (GSTP1) Rabbit Polyclonal Antibody**

#### **Product data:**

<b>Product Type:</b>	Primary Antibodies
<b>Applications:</b>	IF, IHC, WB
<b>Recommended Dilution:</b>	ICC/IF:1:100-1:1000; IHC:1:100-1:1000; WB:1:1000-1:10000
<b>Reactivity:</b>	Human (Predicted: Rat, Dog, Bovine, Rhesus Monkey)
<b>Host:</b>	Rabbit
<b>Isotype:</b>	IgG
<b>Clonality:</b>	Polyclonal
<b>Immunogen:</b>	Synthetic peptide corresponding to a region within amino acids 1 and 63 of GSTP1 (Uniprot ID#P09211)
<b>Formulation:</b>	1XPBS, 20% Glycerol (pH7). 0.01% Thimerosal was added as a preservative.
<b>Concentration:</b>	lot specific
<b>Purification:</b>	Purified by antigen-affinity chromatography.
<b>Conjugation:</b>	Unconjugated
<b>Storage:</b>	Store at -20°C as received.
<b>Stability:</b>	Stable for 12 months from date of receipt.
<b>Predicted Protein Size:</b>	23 kDa
<b>Gene Name:</b>	glutathione S-transferase pi 1
<b>Database Link:</b>	<a href="#">NP_000843</a> <a href="#">Entrez Gene 24426 Rat</a> <a href="#">Entrez Gene 476005 Dog</a> <a href="#">Entrez Gene 2950 Human</a> <a href="#">P09211</a>
<b>Background:</b>	Glutathione S-transferases (GSTs) are a family of enzymes that play an important role in detoxification by catalyzing the conjugation of many hydrophobic and electrophilic compounds with reduced glutathione. Based on their biochemical, immunologic, and structural properties, the soluble GSTs are categorized into 4 main classes: alpha, mu, pi, and theta. This GST family member is a polymorphic gene encoding active, functionally different GSTP1 variant proteins that are thought to function in xenobiotic metabolism and play a role in susceptibility to cancer, and other diseases. [provided by RefSeq]
<b>Synonyms:</b>	DFN7; FAES3; GST3; GSTP; HEL-S-22; PI



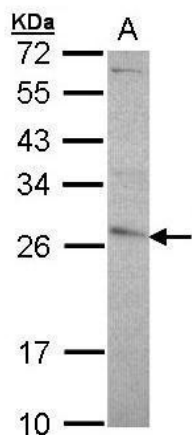
[View online »](#)

**Note:** Seq homology of immunogen across species: Rat (100%), Dog (100%), Rhesus Monkey (100%), Bovine (100%)

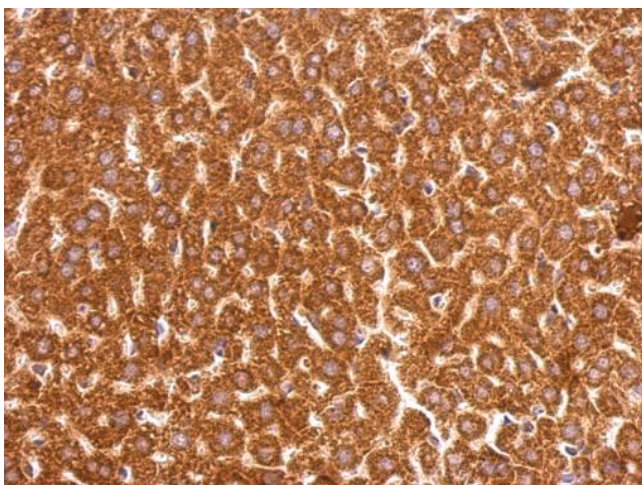
**Protein Families:** Druggable Genome

**Protein Pathways:** Drug metabolism - cytochrome P450, Glutathione metabolism, Metabolism of xenobiotics by cytochrome P450, Pathways in cancer, Prostate cancer

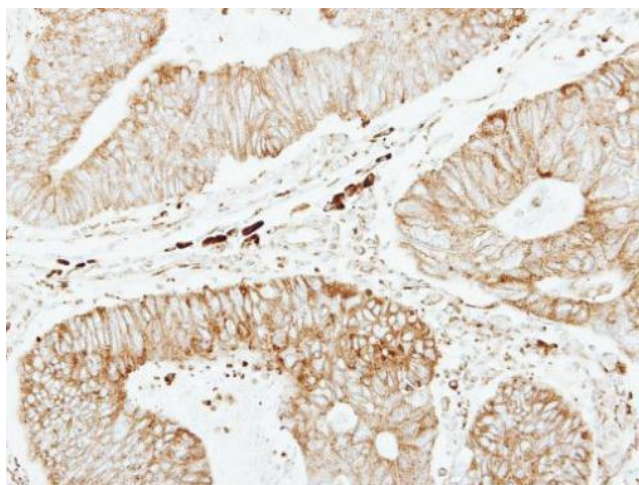
**Product images:**



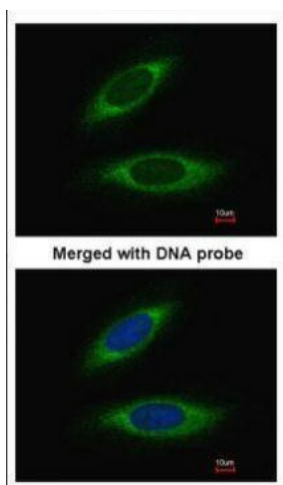
Sample (30 ug of whole cell lysate). A: A431. 12% SDS PAGE. TA308806 diluted at 1:5000.



GSTP1 antibody [N1N2], N-term detects GSTP1 protein at cytosol on mouse liver by immunohistochemical analysis. Sample: Paraffin-embedded mouse liver. GSTP1 antibody [N1N2], N-term (TA308806) dilution: 1:500.



Immunohistochemical analysis of paraffin-embedded Colon ca, using GSTP1 (TA308806) antibody at 1:250 dilution.



Immunofluorescence analysis of paraformaldehyde-fixed HeLa, using glutathione transferase (TA308806) antibody at 1:200 dilution.