

Product datasheet for **TA308805**

Lamin B2 (LMNB2) Rabbit Polyclonal Antibody

Product data:

Product Type:	Primary Antibodies
Applications:	IHC, IP, WB
Recommended Dilution:	IHC:1:100-1:1000; WB:1:500-1:3000
Reactivity:	Human
Host:	Rabbit
Isotype:	IgG
Clonality:	Polyclonal
Immunogen:	Recombinant fragment corresponding to a region within amino acids 221 and 500 of Lamin B2 (Uniprot ID#Q03252)
Formulation:	1XPBS, 20% Glycerol (pH7). 0.025% ProClin 300 was added as a preservative.
Concentration:	lot specific
Purification:	Purified by antigen-affinity chromatography.
Conjugation:	Unconjugated
Storage:	Store at -20°C as received.
Stability:	Stable for 12 months from date of receipt.
Predicted Protein Size:	68 kDa
Gene Name:	lamin B2
Database Link:	NP_116126 Entrez Gene 84823 Human Q03252

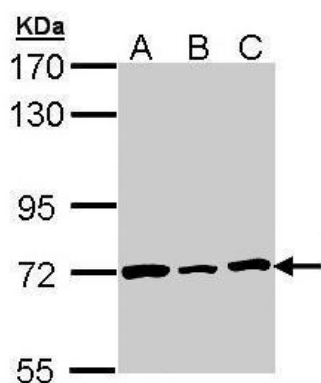
Background: The nuclear lamina consists of a two-dimensional matrix of proteins located next to the inner nuclear membrane. The lamin family of proteins make up the matrix and are highly conserved in evolution. During mitosis, the lamina matrix is reversibly disassembled as the lamin proteins are phosphorylated. Lamin proteins are thought to be involved in nuclear stability, chromatin structure and gene expression. Vertebrate lamins consist of two types, A and B. This gene encodes one of the two B type proteins, B2. This gene is in a head-to-tail orientation with the gene for the translocase of inner mitochondrial membrane 13 homolog gene. [provided by RefSeq]



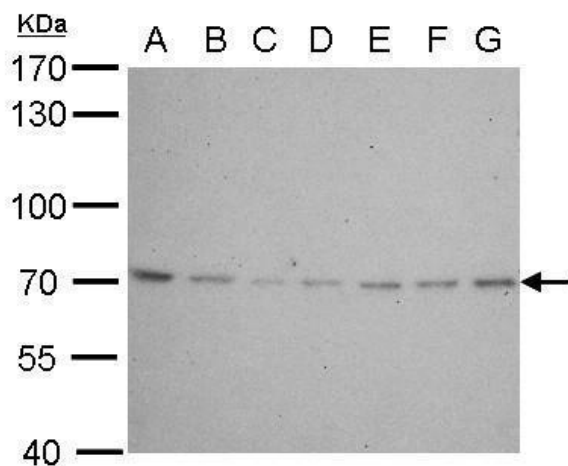
[View online »](#)

Synonyms: EPM9; LAMB2; LMN2

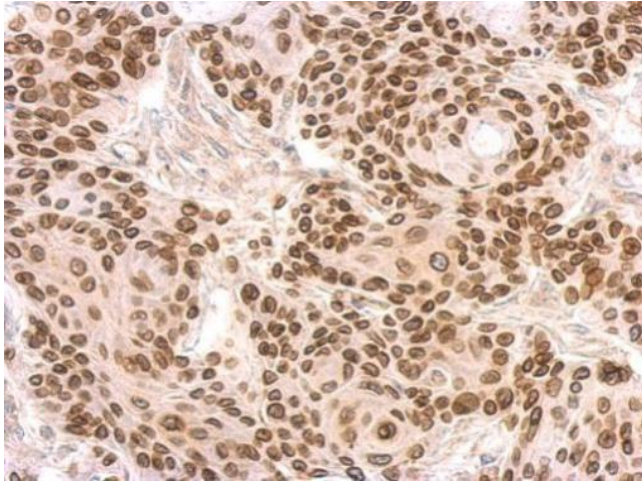
Product images:



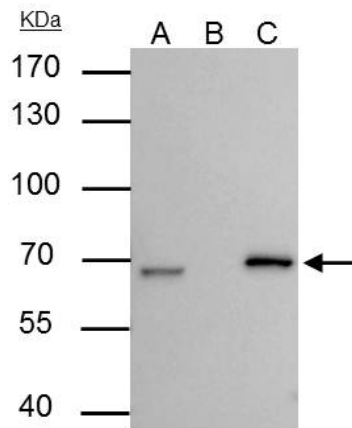
Sample (30 ug of whole cell lysate). A: H1299. B: HeLa. C: Hep G2. 7.5% SDS PAGE. TA308805 diluted at 1:1000.



Lamin B2 antibody [N3C2], Internal detects LMNB2 protein by Western blot analysis. A. 30 ug Neuro2A whole cell lysate/extract. B. 30 ug GL261 whole cell lysate/extract. C. 30 ug C8D30 whole cell lysate/extract. D. 30 ug NIH-3T3 whole cell lysate/extract.



Lamin B2 antibody [N3C2], Internal detects LMNB2 protein at on Cal27 xenograft by immunohistochemical analysis. Sample: Paraffin-embedded Cal27 xenograft. Lamin B2 antibody [N3C2], Internal (TA308805) dilution: 1:500.



Lamin B2 antibody [N3C2], Internal immunoprecipitates Lamin B2 protein in IP experiments. IP Sample: HepG2 whole cell lysate/extract A : 30 ug whole cell lysate/extract of Lamin B2 protein expressing HepG2 cells B : Control with 3 ug of pre-immune rabbit