

Product datasheet for **TA308804**

Villin (VIL1) Rabbit Polyclonal Antibody

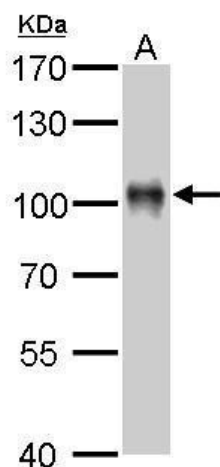
Product data:

Product Type:	Primary Antibodies
Applications:	IF, IHC, WB
Recommended Dilution:	ICC/IF:1:100-1:1000; IHC:1:100-1:1000; WB:1:1000-1:10000
Reactivity:	Human
Host:	Rabbit
Isotype:	IgG
Clonality:	Polyclonal
Immunogen:	Recombinant protein fragment contain a sequence corresponding to a region within amino acids 7 and 246 of Villin
Formulation:	1XPBS, 20% Glycerol (pH7). 0.025% ProClin 300 was added as a preservative.
Concentration:	lot specific
Purification:	Purified by antigen-affinity chromatography.
Conjugation:	Unconjugated
Storage:	Store at -20°C as received.
Stability:	Stable for 12 months from date of receipt.
Predicted Protein Size:	93 kDa
Gene Name:	villin 1
Database Link:	NP_009058 Entrez Gene 7429 Human P09327
Background:	This gene encodes a member of a family of calcium-regulated actin-binding proteins. This protein represents a dominant part of the brush border cytoskeleton which functions in the capping, severing, and bundling of actin filaments. Two mRNAs of 2.7 kb and 3.5 kb have been observed; they result from utilization of alternate poly-adenylation signals present in the terminal exon. [provided by RefSeq]
Synonyms:	D2S1471; VIL

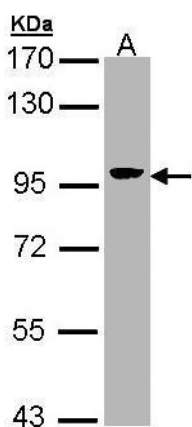


[View online »](#)

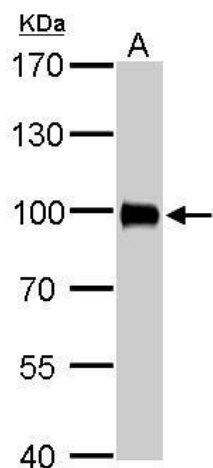
Product images:



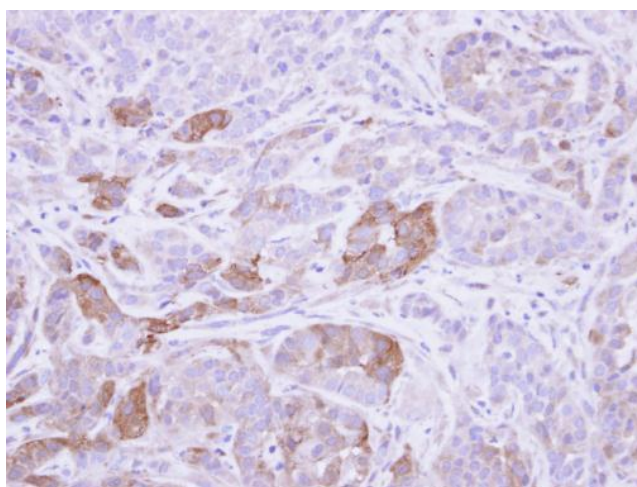
Villin antibody detects VIL1 protein by Western blot analysis. A. 50 ug mouse kidney lysate/extract. 7.5 % SDS-PAGE. Villin antibody (TA308804) dilution: 1:1000



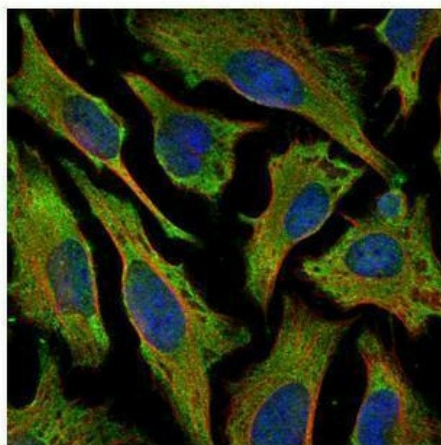
Sample (30 ug of whole cell lysate). A: Hep G2. 7.5% SDS PAGE. TA308804 diluted at 1:5000



Villin antibody detects VIL1 protein by Western blot analysis. A. 50 ug rat kidney lysate/extract. 7.5 % SDS-PAGE. Villin antibody (TA308804) dilution: 1:2000



Immunohistochemical analysis of paraffin-embedded A549 xenograft, using Villin (TA308804) antibody at 1:500 dilution.



Confocal immunofluorescence analysis (Olympus FV10i) of methanol-fixed HeLa, using Villin (TA308804) antibody (Green) at 1:500 dilution. Alpha-tubulin filaments were labeled with anti-alpha tubulin antibody (Red) at 1:2000.