

Product datasheet for **TA308803**

Cytokeratin 20 (KRT20) Rabbit Polyclonal Antibody

Product data:

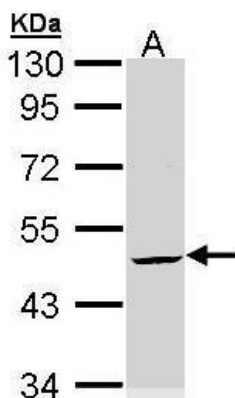
Product Type:	Primary Antibodies
Applications:	IF, IHC, WB
Recommended Dilution:	ICC/IF:1:100-1:1000; IHC:1:100-1:1000; WB:1:500-1:3000
Reactivity:	Human (Predicted: Mouse, Rat)
Host:	Rabbit
Isotype:	IgG
Clonality:	Polyclonal
Immunogen:	Recombinant fragment corresponding to a region within amino acids 75 and 317 of Cytokeratin 20 (Uniprot ID#P35900)
Formulation:	0.1M Tris, 0.1M Glycine, 10% Glycerol (pH7). 0.01% Thimerosal was added as a preservative.
Concentration:	lot specific
Purification:	Purified by antigen-affinity chromatography.
Conjugation:	Unconjugated
Storage:	Store at -20°C as received.
Stability:	Stable for 12 months from date of receipt.
Predicted Protein Size:	49 kDa
Gene Name:	keratin 20
Database Link:	NP_061883 Entrez Gene 66809 Mouse Entrez Gene 286912 Rat Entrez Gene 54474 Human P35900
Background:	The protein encoded by this gene is a member of the keratin family. The keratins are intermediate filament proteins responsible for the structural integrity of epithelial cells and are subdivided into cytokeratins and hair keratins. The type I cytokeratins consist of acidic proteins which are arranged in pairs of heterotypic keratin chains. This cytokeratin is a major cellular protein of mature enterocytes and goblet cells and is specifically expressed in the gastric and intestinal mucosa. The type I cytokeratin genes are clustered in a region of chromosome 17q12-q21. [provided by RefSeq]
Synonyms:	CD20; CK-20; CK20; K20; KRT21



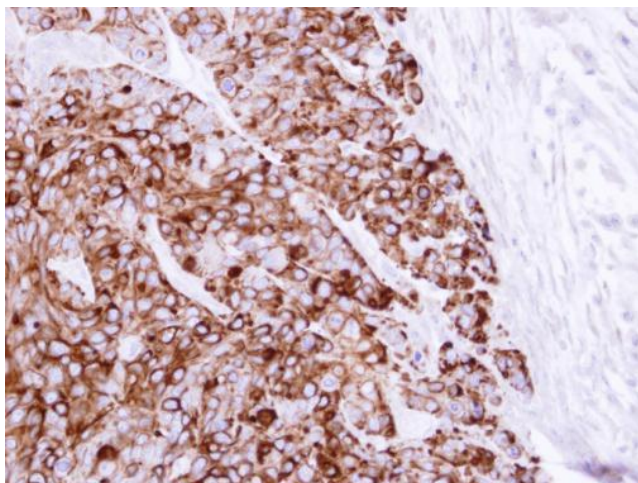
[View online »](#)

Note: Seq homology of immunogen across species: mouse (82%), Rat (83%)

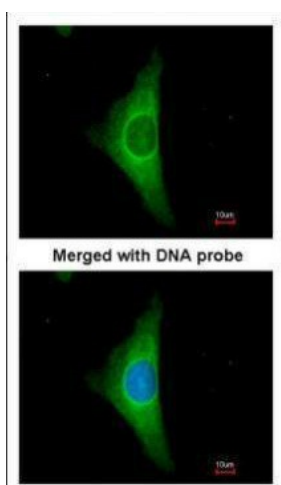
Product images:



Sample (30 ug of whole cell lysate). A: HeLa. 10% SDS PAGE. TA308803 diluted at 1:3000



Immunohistochemical analysis of paraffin-embedded HT29 xenograft, using Cytokeratin 20 (TA308803) antibody at 1:100 dilution.



Immunofluorescence analysis of paraformaldehyde-fixed HeLa, using Cytokeratin 20 (TA308803) antibody at 1:200 dilution.