

Product datasheet for **TA308801**

Fascin (FSCN1) Rabbit Polyclonal Antibody

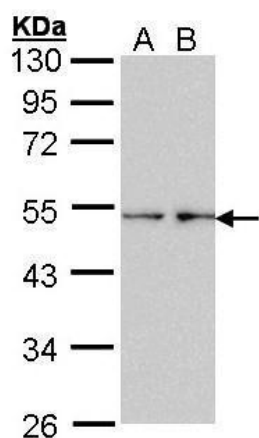
Product data:

Product Type:	Primary Antibodies
Applications:	WB
Recommended Dilution:	WB:1:500-1:3000
Reactivity:	Human (Predicted: Mouse, Chicken, Pig, Bovine)
Host:	Rabbit
Isotype:	IgG
Clonality:	Polyclonal
Immunogen:	Recombinant fragment corresponding to a region within amino acids 162 and 386 of Fascin 1 (Uniprot ID#Q16658)
Formulation:	0.1M Tris, 0.1M Glycine, 10% Glycerol (pH7). 0.01% Thimerosal was added as a preservative.
Concentration:	lot specific
Purification:	Purified by antigen-affinity chromatography.
Conjugation:	Unconjugated
Storage:	Store at -20°C as received.
Stability:	Stable for 12 months from date of receipt.
Predicted Protein Size:	55 kDa
Gene Name:	fascin actin-bundling protein 1
Database Link:	NP_003079 Entrez Gene 14086 Mouse Entrez Gene 6624 Human Q16658
Synonyms:	FAN1; HSN; p55; SNL
Note:	Seq homology of immunogen across species: Mouse (97%), Chicken (84%), Pig (96%), Bovine (95%)



[View online »](#)

Product images:



Sample (30 ug of whole cell lysate). A: HeLa. B: Hep G2. 7.5% SDS PAGE. TA308801 diluted at 1:1000