

Product datasheet for **TA308800**

KRT13 Rabbit Polyclonal Antibody

Product data:

Product Type:	Primary Antibodies
Applications:	IF, IHC, WB
Recommended Dilution:	ICC/IF:1:100-1:1000; IHC:1:100-1:1000; WB:1:500-1:3000
Reactivity:	Human (Predicted: Cow, Rat)
Host:	Rabbit
Isotype:	IgG
Clonality:	Polyclonal
Immunogen:	Recombinant protein fragment contain a sequence corresponding to a region within amino acids 198 and 438 of Cytokeratin 13
Formulation:	0.1M Tris, 0.1M Glycine, 10% Glycerol (pH7). 0.01% Thimerosal was added as a preservative.
Concentration:	lot specific
Purification:	Purified by antigen-affinity chromatography.
Conjugation:	Unconjugated
Storage:	Store at -20°C as received.
Stability:	Stable for 12 months from date of receipt.
Predicted Protein Size:	50 kDa
Gene Name:	keratin 13
Database Link:	NP_002265 Entrez Gene 287699 Rat Entrez Gene 3860 Human P13646



[View online »](#)

Background:

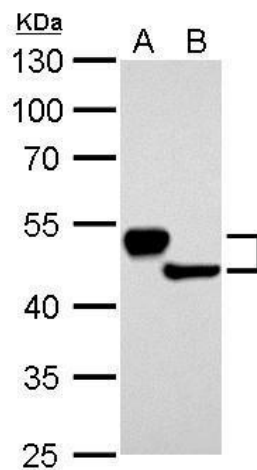
The protein encoded by this gene is a member of the keratin gene family. The keratins are intermediate filament proteins responsible for the structural integrity of epithelial cells and are subdivided into cytokeratins and hair keratins. Most of the type I cytokeratins consist of acidic proteins which are arranged in pairs of heterotypic keratin chains. This type I cytokeratin is paired with keratin 4 and expressed in the suprabasal layers of non-cornified stratified epithelia. Mutations in this gene and keratin 4 have been associated with the autosomal dominant disorder White Sponge Nevus. The type I cytokeratins are clustered in a region of chromosome 17q21.2. Alternative splicing of this gene results in multiple transcript variants; however, not all variants have been described. [provided by RefSeq]

Synonyms:

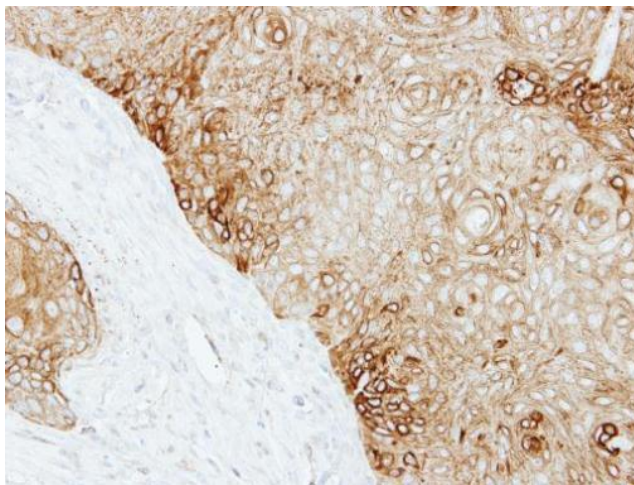
CK13; K13; WSN2

Note:

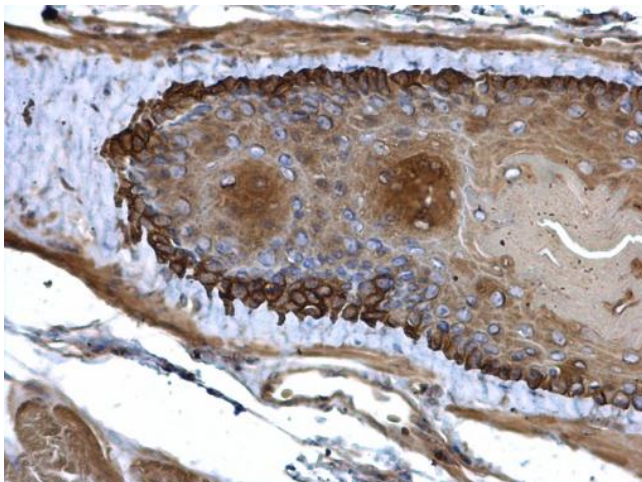
Seq homology of immunogen across species: Cow (84%), Rat (94%)

Product images:

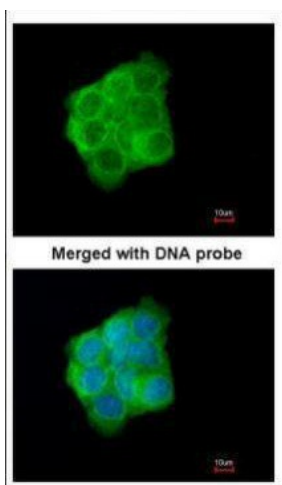
Cytokeratin 13 antibody detects KRT13 protein by Western blot analysis. A. 30 µg A431 whole cell lysate/extract. B. 30 µg HeLa whole cell lysate/extract. 10 % SDS-PAGE. Cytokeratin 13 antibody (TA308800) dilution: 1:10000



Immunohistochemical analysis of paraffin-embedded Cal27 xenograft, using Cytokeratin 13 (TA308800) antibody at 1:500 dilution.



Cytokeratin 13 antibody detects Cytokeratin 13 protein at cytosol on mouse esophagus by immunohistochemical analysis. Sample: Paraffin-embedded mouse esophagus. Cytokeratin 13 antibody (TA308800) dilution: 1:500.



Immunofluorescence analysis of paraformaldehyde-fixed A431, using Cytokeratin 13 (TA308800) antibody at 1:200 dilution.