

Product datasheet for **TA308798**

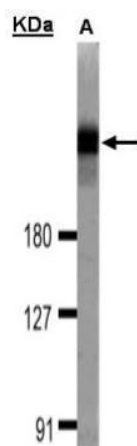
DOCK1 Rabbit Polyclonal Antibody

Product data:

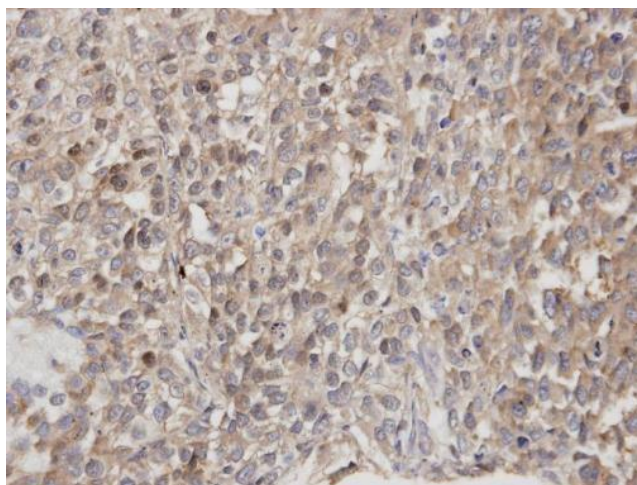
Product Type:	Primary Antibodies
Applications:	IF, IHC, WB
Recommended Dilution:	ICC/IF:1:100-1:1000; IHC:1:100-1:1000; WB:1:500-1:3000
Reactivity:	Human (Predicted: Mouse, Rat, Zebrafish)
Host:	Rabbit
Isotype:	IgG
Clonality:	Polyclonal
Immunogen:	Synthetic peptide corresponding to a region within amino acids 1802 and 1865 of DOCK1
Formulation:	1XPBS, 20% Glycerol (pH7). 0.01% Thimerosal was added as a preservative.
Concentration:	lot specific
Purification:	Purified by antigen-affinity chromatography.
Conjugation:	Unconjugated
Storage:	Store at -20°C as received.
Stability:	Stable for 12 months from date of receipt.
Predicted Protein Size:	215 kDa
Gene Name:	dedicator of cytokinesis 1
Database Link:	NP_001371 Entrez Gene 309081 RatEntrez Gene 330662 MouseEntrez Gene 1793 Human Q14185
Background:	This gene product binds to the SH3 domain of CRK protein. It may regulate cell surface extension and may have a role in the cell surface extension of an engulfing cell around a dying cell during apoptosis. [provided by RefSeq]
Synonyms:	ced5; DOCK180
Note:	Seq homology of immunogen across species: Mouse (100%), Rat (100%), Zebrafish (92%)
Protein Families:	Druggable Genome
Protein Pathways:	Focal adhesion, Regulation of actin cytoskeleton



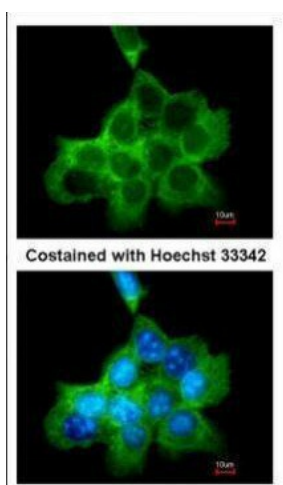
[View online »](#)

Product images:

Sample (30 ug of whole cell lysate). A:293T. 7.5% SDS PAGE. TA308798 diluted at 1:1000



Immunohistochemical analysis of paraffin-embedded Lung CA, using DOCK 180 (TA308798) antibody at 1:100 dilution.



Immunofluorescence analysis of methanol-fixed A431, using DOCK1/180 (TA308798) antibody at 1:200 dilution.