

## Product datasheet for **TA308797**

### DUSP8 Rabbit Polyclonal Antibody

#### Product data:

Product Type:	Primary Antibodies
Applications:	IF, WB
Recommended Dilution:	ICC/IF:1:100-1:1000; WB:1:500-1:3000
Reactivity:	Human (Predicted: Mouse, Rat)
Host:	Rabbit
Isotype:	IgG
Clonality:	Polyclonal
Immunogen:	Synthetic peptide corresponding to a region within amino acids 1 and 44 of DUSP8 (Uniprot ID#Q13202)
Formulation:	0.1M Tris, 0.1M Glycine, 10% Glycerol (pH7). 0.01% Thimerosal was added as a preservative.
Concentration:	lot specific
Purification:	Purified by antigen-affinity chromatography.
Conjugation:	Unconjugated
Storage:	Store at -20°C as received.
Stability:	Stable for 12 months from date of receipt.
Predicted Protein Size:	66 kDa
Gene Name:	dual specificity phosphatase 8
Database Link:	<a href="#">NP_004411</a> <a href="#">Entrez Gene 18218 Mouse</a> <a href="#">Entrez Gene 361679 Rat</a> <a href="#">Entrez Gene 1850 Human</a> <a href="#">Q13202</a>



[View online »](#)

**Background:**

The protein encoded by this gene is a member of the dual specificity protein phosphatase subfamily. These phosphatases inactivate their target kinases by dephosphorylating both the phosphoserine/threonine and phosphotyrosine residues. They negatively regulate members of the mitogen-activated protein (MAP) kinase superfamily (MAPK/ERK, SAPK/JNK, p38), which is associated with cellular proliferation and differentiation. Different members of the family of dual specificity phosphatases show distinct substrate specificities for various MAP kinases, different tissue distribution and subcellular localization, and different modes of inducibility of their expression by extracellular stimuli. This gene product inactivates SAPK/JNK and p38, is expressed predominantly in the adult brain, heart, and skeletal muscle, is localized in the cytoplasm, and is induced by nerve growth factor and insulin. An intronless pseudogene for DUSP8 is present on chromosome 10q11.2. [provided by RefSeq]

**Synonyms:**

C11orf81; HB5; HVH-5; HVH8

**Note:**

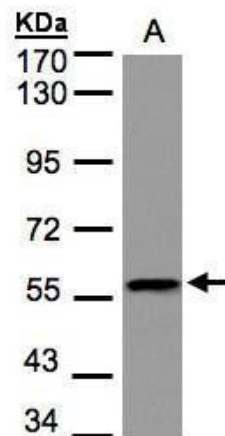
Seq homology of immunogen across species: Mouse (100%), Rat (100%)

**Protein Families:**

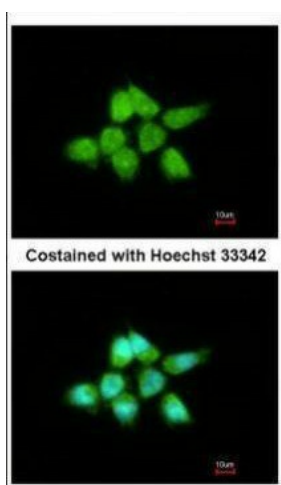
Druggable Genome, Phosphatase

**Protein Pathways:**

MAPK signaling pathway

**Product images:**

Sample (30 ug of whole cell lysate). A:Raji. 7.5% SDS PAGE. TA308797 diluted at 1:1000



Immunofluorescence analysis of paraformaldehyde-fixed A431, using DUSP8 (TA308797) antibody at 1:200 dilution.