

## Product datasheet for **TA308795**

### PIK3CB Rabbit Polyclonal Antibody

#### Product data:

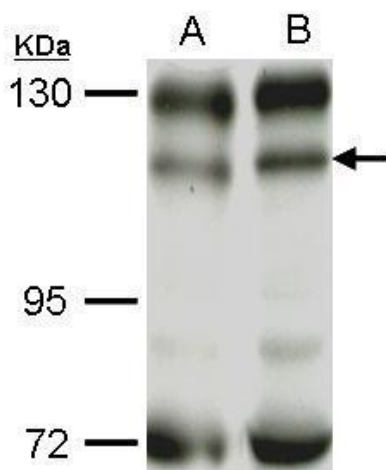
Product Type:	Primary Antibodies
Applications:	IF, WB
Recommended Dilution:	ICC/IF:1:100-1:1000; WB:1:500-1:3000
Reactivity:	Human, Mouse
Host:	Rabbit
Isotype:	IgG
Clonality:	Polyclonal
Immunogen:	Recombinant fragment corresponding to a region within amino acids 509 and 820 of PI3 kinase p110 beta (Uniprot ID#P42338)
Formulation:	0.1M Tris, 0.1M Glycine, 10% Glycerol (pH7). 0.01% Thimerosal was added as a preservative.
Concentration:	lot specific
Purification:	Purified by antigen-affinity chromatography.
Conjugation:	Unconjugated
Storage:	Store at -20°C as received.
Stability:	Stable for 12 months from date of receipt.
Predicted Protein Size:	123 kDa
Gene Name:	phosphatidylinositol-4,5-bisphosphate 3-kinase catalytic subunit beta
Database Link:	<a href="#">NP_006210</a> <a href="#">Entrez Gene 74769 Mouse</a> <a href="#">Entrez Gene 5291 Human</a> <a href="#">P42338</a>
Background:	Phosphoinositide 3-kinases (PI3Ks) phosphorylate the 3-prime OH position of the inositol ring of inositol lipids. They have been implicated as participants in signaling pathways regulating cell growth by virtue of their activation in response to various mitogenic stimuli. PI3Ks are composed of a 110-kD catalytic subunit, such as PIK3CB, and an 85-kD adaptor subunit (Hu et al., 1993 [PubMed 8246984]). [supplied by OMIM]
Synonyms:	P110BETA; PI3K; PI3KBETA; PIK3C1
Protein Families:	Druggable Genome



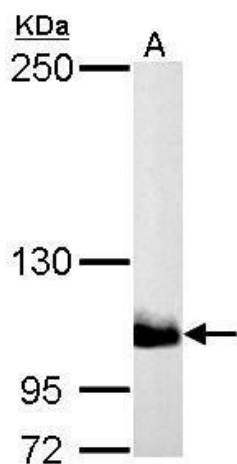
[View online »](#)

**Protein Pathways:**

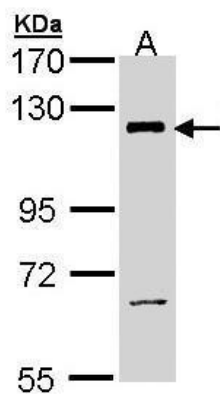
Acute myeloid leukemia, Apoptosis, B cell receptor signaling pathway, Chemokine signaling pathway, Chronic myeloid leukemia, Colorectal cancer, Endometrial cancer, ErbB signaling pathway, Fc epsilon RI signaling pathway, Fc gamma R-mediated phagocytosis, Focal adhesion, Glioma, Inositol phosphate metabolism, Insulin signaling pathway, Jak-STAT signaling pathway, Leukocyte transendothelial migration, Melanoma, mTOR signaling pathway, Natural killer cell mediated cytotoxicity, Neurotrophin signaling pathway, Non-small cell lung cancer, Pancreatic cancer, Pathways in cancer, Phosphatidylinositol signaling system, Progesterone-mediated oocyte maturation, Prostate cancer, Regulation of actin cytoskeleton, Renal cell carcinoma, Small cell lung cancer, T cell receptor signaling pathway, Toll-like receptor signaling pathway, Type II diabetes mellitus, VEGF signaling pathway

**Product images:**


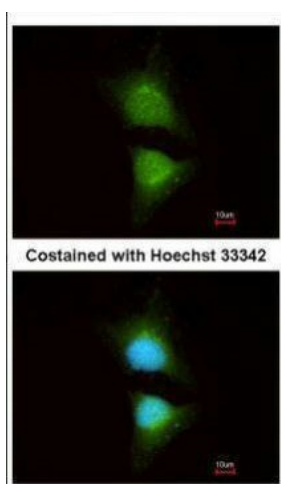
Sample (50 ug of whole cell lysate). A: C2C12. B: C2C12+AEA10mM. TA308795 diluted at 1:1000.



PI3K p110 beta antibody [N3C2], Internal detects PIK3CB protein by Western blot analysis. A. 30 ug PC-12 whole cell lysate/extract. 5 % SDS-PAGE. PI3K p110 beta antibody [N3C2], Internal (TA308795) dilution: 1:1000



Sample (30 ug of whole cell lysate). A: H1299.  
7.5% SDS PAGE. TA308795 diluted at 1:1000.



Immunofluorescence analysis of methanol-fixed HeLa, using PI3K p110 beta (TA308795) antibody at 1:200 dilution.