

Product datasheet for **TA308794**

MC1 Receptor (MC1R) Rabbit Polyclonal Antibody

Product data:

Product Type:	Primary Antibodies
Applications:	IHC, WB
Recommended Dilution:	IHC:1:100-1:1000; WB:1:500-1:3000
Reactivity:	Human (Predicted: Chicken, Chimpanzee)
Host:	Rabbit
Isotype:	IgG
Clonality:	Polyclonal
Immunogen:	Synthetic peptide corresponding to a region within amino acids 253 and 317 of MC1 Receptor (Uniprot ID#Q01726)
Formulation:	1XPBS, 20% Glycerol (pH7). 0.025% ProClin 300 was added as a preservative.
Concentration:	lot specific
Purification:	Purified by antigen-affinity chromatography.
Conjugation:	Unconjugated
Storage:	Store at -20°C as received.
Stability:	Stable for 12 months from date of receipt.
Predicted Protein Size:	35 kDa
Gene Name:	melanocortin 1 receptor
Database Link:	NP_002377 Entrez Gene 4157 Human Q01726



[View online »](#)

Background:

This intronless gene encodes the receptor protein for melanocyte-stimulating hormone (MSH). The encoded protein, a seven pass transmembrane G protein coupled receptor, controls melanogenesis. Two types of melanin exist: red pheomelanin and black eumelanin. Gene mutations that lead to a loss in function are associated with increased pheomelanin production, which leads to lighter skin and hair color. Eumelanin is photoprotective but pheomelanin may contribute to UV-induced skin damage by generating free radicals upon UV radiation. Binding of MSH to its receptor activates the receptor and stimulates eumelanin synthesis. This receptor is a major determining factor in sun sensitivity and is a genetic risk factor for melanoma and non-melanoma skin cancer. Over 30 variant alleles have been identified which correlate with skin and hair color, providing evidence that this gene is an important component in determining normal human pigment variation. [provided by RefSeq]

Synonyms:

CMM5; MSH-R; SHEP2

Note:

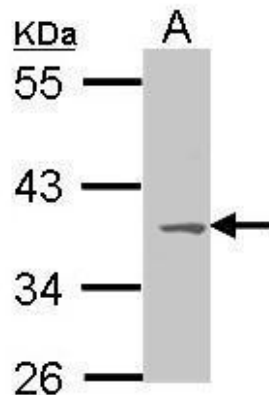
Seq homology of immunogen across species: Chicken (80%), Chimpanzee (100%)

Protein Families:

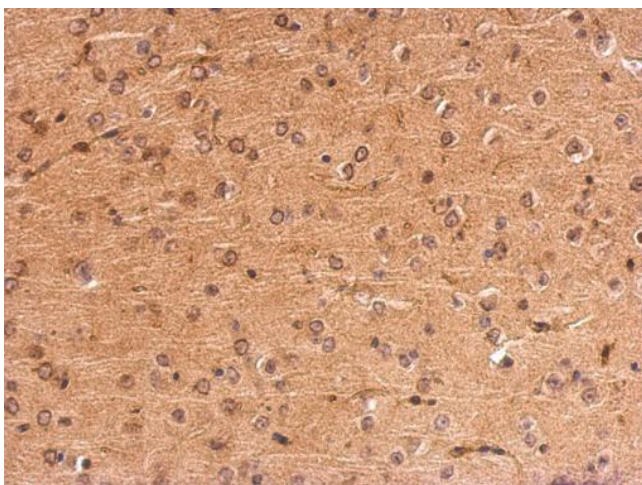
Druggable Genome, GPCR, Transmembrane

Protein Pathways:

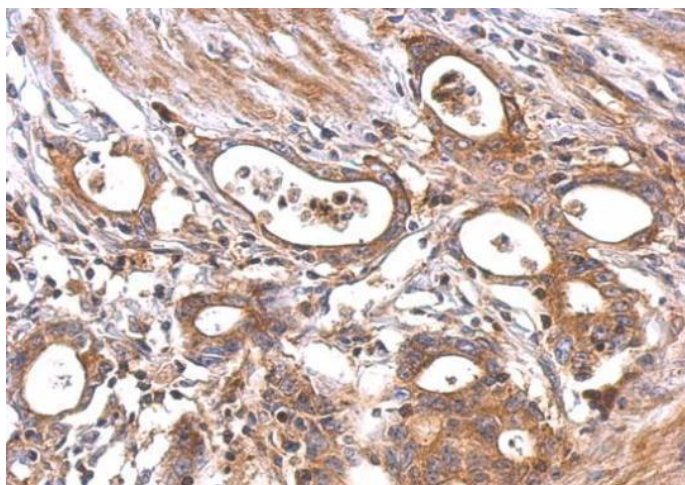
Melanogenesis, Neuroactive ligand-receptor interaction

Product images:

Sample (30 ug of whole cell lysate). A: Molt-4.
10% SDS PAGE. TA308794 diluted at 1:1000.



MC1 Receptor antibody [C2C3], C-term detects MC1R protein at membrane on mouse fore brain by immunohistochemical analysis. Sample: Paraffin-embedded mouse fore brain. MC1 Receptor antibody [C2C3], C-term (TA308794) dilution: 1:500.



MC1 Receptor antibody [C2C3], C-term detects MC1R protein at cytosol and membrane on colon carcinoma by immunohistochemical analysis. Sample: Paraffin-embedded colon carcinoma. MC1 Receptor antibody [C2C3], C-term (TA308794) dilution: 1:500.