

## Product datasheet for **TA308793**

### I 309 (CCL1) Rabbit Polyclonal Antibody

#### Product data:

Product Type:	Primary Antibodies
Applications:	IHC, WB
Recommended Dilution:	IHC:1:100-1:1000; WB:1:500-1:3000
Reactivity:	Human
Host:	Rabbit
Isotype:	IgG
Clonality:	Polyclonal
Immunogen:	Synthetic peptide corresponding to a region within amino acids 32 and 96 of I-309 (Uniprot ID#P22362)
Formulation:	0.1M Tris, 0.1M Glycine, 10% Glycerol (pH7). 0.01% Thimerosal was added as a preservative.
Concentration:	lot specific
Purification:	Purified by antigen-affinity chromatography.
Conjugation:	Unconjugated
Storage:	Store at -20°C as received.
Stability:	Stable for 12 months from date of receipt.
Predicted Protein Size:	11 kDa
Gene Name:	C-C motif chemokine ligand 1
Database Link:	<a href="#">NP_002972</a> <a href="#">Entrez Gene 6346 Human P22362</a>
Background:	This gene is one of several cytokine genes clustered on the q-arm of chromosome 17. Cytokines are a family of secreted proteins involved in immunoregulatory and inflammatory processes. The protein encoded by this gene is structurally related to the CXC subfamily of cytokines. Members of this subfamily are characterized by two cysteines separated by a single amino acid. This cytokine is secreted by activated T cells and displays chemotactic activity for monocytes but not for neutrophils. It binds to the chemokine receptor CCR8. [provided by RefSeq]
Synonyms:	I-309; P500; SCYA1; SISE; TCA3

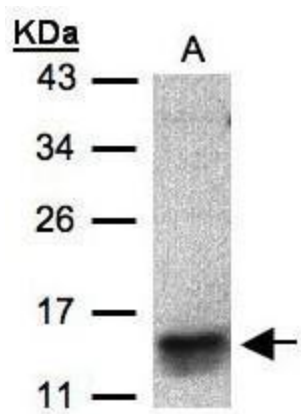


[View online »](#)

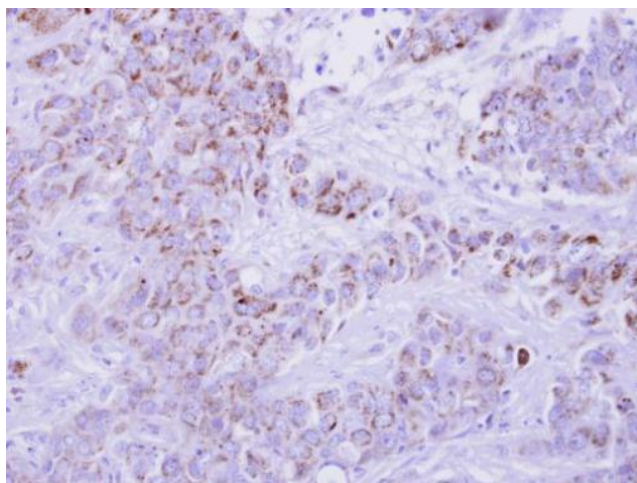
Protein Families: Druggable Genome, Secreted Protein

Protein Pathways: Chemokine signaling pathway, Cytokine-cytokine receptor interaction

### Product images:



Sample (30 ug of whole cell lysate). A: MOLT4.  
15% SDS PAGE. TA308793 diluted at 1:500



I-309 antibody detects CCL1 protein at cytosol on Breast Carcinoma by immunohistochemical analysis. Sample: Paraffin-embedded Breast Carcinoma. I-309 antibody (TA308793) dilution: 1:250.