

Product datasheet for **TA308790**

Cullin 3 (CUL3) Rabbit Polyclonal Antibody

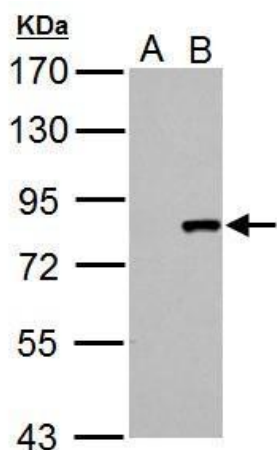
Product data:

Product Type:	Primary Antibodies
Applications:	WB
Recommended Dilution:	WB:1:1000-1:10000
Reactivity:	Human (Predicted: Rat, Bovine, Rhesus Monkey, Mouse)
Host:	Rabbit
Isotype:	IgG
Clonality:	Polyclonal
Immunogen:	Recombinant fragment corresponding to a region within amino acids 352 and 656 of Cullin 3 (Uniprot ID#Q13618)
Formulation:	0.1M Tris, 0.1M Glycine, 10% Glycerol (pH7). 0.01% Thimerosal was added as a preservative.
Concentration:	lot specific
Purification:	Purified by antigen-affinity chromatography.
Conjugation:	Unconjugated
Storage:	Store at -20°C as received.
Stability:	Stable for 12 months from date of receipt.
Predicted Protein Size:	89 kDa
Gene Name:	cullin 3
Database Link:	NP_003581 Entrez Gene 26554 Mouse Entrez Gene 301555 Rat Entrez Gene 8452 Human Q13618
Background:	CUL3 is a component of a ubiquitin E3 ligase that is essential for mitotic division (Sumara et al., 2007 [PubMed 17543862]). [supplied by OMIM]
Synonyms:	CUL-3; PHA2E
Note:	Seq homology of immunogen across species: Mouse (100%), Rat (100%), Rhesus Monkey (100%), Bovine (100%)
Protein Families:	Druggable Genome
Protein Pathways:	Ubiquitin mediated proteolysis



[View online »](#)

Product images:



Cullin 3 antibody detects Cullin 3 protein by Western blot analysis. A. 30 ug 293T whole cell lysate/extract. B. 30 ug whole cell lysate/extract of human CUL3-transfected 293T cells. 7.5 % SDS-PAGE. Cullin 3 antibody (TA308790) dilution: 1:5000