

Product datasheet for **TA308789**

XRCC2 Rabbit Polyclonal Antibody

Product data:

Product Type:	Primary Antibodies
Applications:	WB
Recommended Dilution:	WB:1:500-1:3000
Reactivity:	Human, Mouse (Predicted: Rat, Bovine)
Host:	Rabbit
Isotype:	IgG
Clonality:	Polyclonal
Immunogen:	Recombinant fragment corresponding to a region within amino acids 1 and 123 of XRCC2 (Uniprot ID#O43543)
Formulation:	0.1M Tris, 0.1M Glycine, 10% Glycerol (pH7). 0.01% Thimerosal was added as a preservative.
Concentration:	lot specific
Purification:	Purified by antigen-affinity chromatography.
Conjugation:	Unconjugated
Storage:	Store at -20°C as received.
Stability:	Stable for 12 months from date of receipt.
Predicted Protein Size:	32 kDa
Gene Name:	X-ray repair complementing defective repair in Chinese hamster cells 2
Database Link:	NP_005422 Entrez Gene 57434 MouseEntrez Gene 499966 RatEntrez Gene 7516 Human O43543
Background:	This gene encodes a member of the RecA/Rad51-related protein family that participates in homologous recombination to maintain chromosome stability and repair DNA damage. This gene is involved in the repair of DNA double-strand breaks by homologous recombination and it functionally complements Chinese hamster <i>irs1</i> , a repair-deficient mutant that exhibits hypersensitivity to a number of different DNA-damaging agents. [provided by RefSeq]
Synonyms:	FANCU
Note:	Seq homology of immunogen across species: Rat (94%), Bovine (94%)

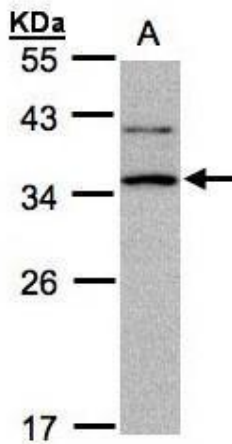


[View online »](#)

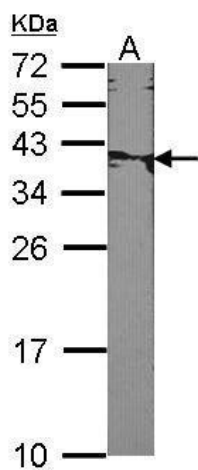
Protein Families: Druggable Genome

Protein Pathways: Homologous recombination

Product images:



Sample. A: 30ug of Raji whole cell lysate. 12% SDS PAGE. TA308789 diluted at 1:1000



Sample (30 ug of whole cell lysate). A:NIH-3T3. 12% SDS PAGE. TA308789 diluted at 1:1000.