

Product datasheet for **TA308784**

MVP Rabbit Polyclonal Antibody

Product data:

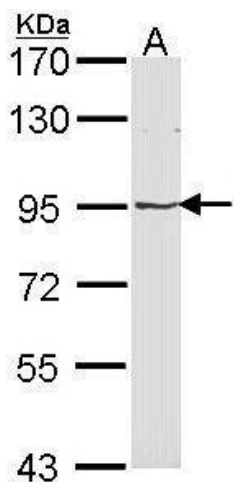
Product Type:	Primary Antibodies
Applications:	IF, IHC, WB
Recommended Dilution:	ICC/IF:1:100-1:1000; IHC:1:100-1:1000; WB:1:500-1:3000
Reactivity:	Human
Host:	Rabbit
Isotype:	IgG
Clonality:	Polyclonal
Immunogen:	Recombinant fragment corresponding to a region within amino acids 158 and 380 of MVP/LRP (Uniprot ID#Q14764)
Formulation:	0.1M Tris, 0.1M Glycine, 20% Glycerol (pH7). 0.01% Thimerosal was added as a preservative.
Concentration:	lot specific
Purification:	Purified by antigen-affinity chromatography.
Conjugation:	Unconjugated
Storage:	Store at -20°C as received.
Stability:	Stable for 12 months from date of receipt.
Predicted Protein Size:	99 kDa
Gene Name:	major vault protein
Database Link:	NP_005106 Entrez Gene 9961 Human Q14764
Background:	This gene encodes the major vault protein which is a lung resistance-related protein. Vaults are multi-subunit structures that may be involved in nucleo-cytoplasmic transport. This protein mediates drug resistance, perhaps via a transport process. It is widely distributed in normal tissues, and overexpressed in multidrug-resistant cancer cells. The protein overexpression is a potentially useful marker of clinical drug resistance. This gene produces two transcripts by using two alternative exon 2 sequences; however, the open reading frames are the same in both transcripts. [provided by RefSeq]
Synonyms:	LRP; VAULT1



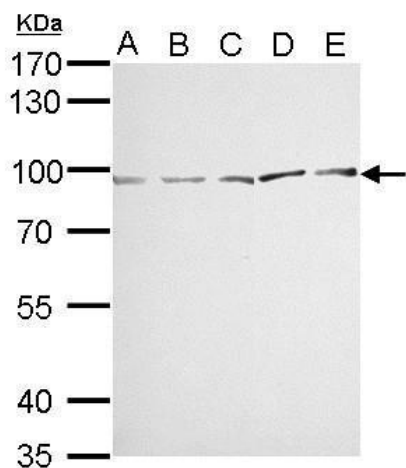
[View online »](#)

Protein Families: Druggable Genome

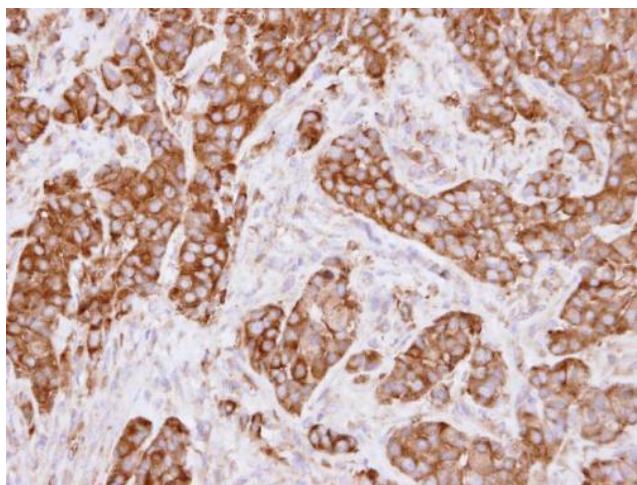
Product images:



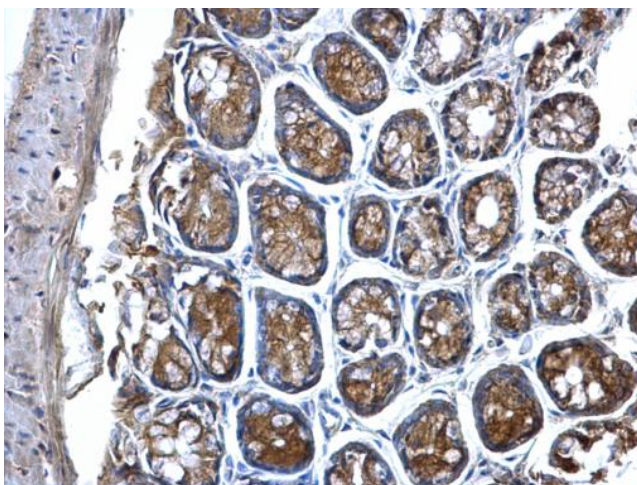
Sample (30 ug of whole cell lysate). A: Molt-4. 7.5% SDS PAGE. TA308784 diluted at 1:1000.



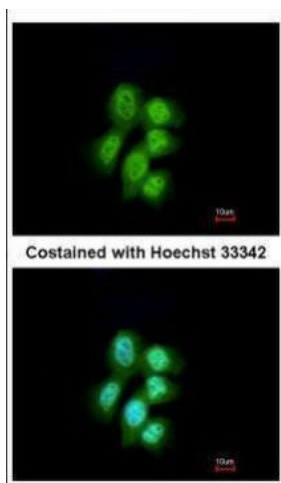
MVP/LRP antibody detects MVP protein by Western blot analysis. A. 30 ug Neuro2A whole cell lysate/extract. B. 30 ug GL261 whole cell lysate/extract. C. 30 ug C8D30 whole cell lysate/extract. D. 30 ug BCL-1 whole cell lysate/extract. E. 30 ug Raw264.7 whol



Immunohistochemical analysis of paraffin-embedded A549 xenograft, using LRP (MVP) (TA308784) antibody at 1:500 dilution.



MVP/LRP antibody detects MVP/LRP protein at cytosol on mouse colon by immunohistochemical analysis. Sample: Paraffin-embedded mouse colon. MVP/LRP antibody (TA308784) dilution: 1:500.



Immunofluorescence analysis of paraformaldehyde-fixed A431, using MVP/LRP (TA308784) antibody at 1:200 dilution.