

## Product datasheet for **TA308783**

### **ESE1 (ELF3) Rabbit Polyclonal Antibody**

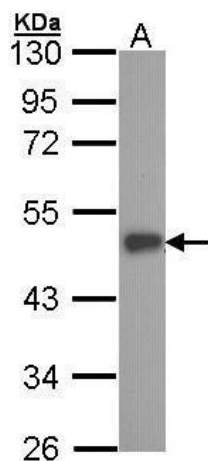
#### **Product data:**

<b>Product Type:</b>	Primary Antibodies
<b>Applications:</b>	IF, IHC, WB
<b>Recommended Dilution:</b>	ICC/IF:1:100-1:1000; IHC:1:100-1:1000; WB:1:500-1:3000
<b>Reactivity:</b>	Human (Predicted: Mouse)
<b>Host:</b>	Rabbit
<b>Isotype:</b>	IgG
<b>Clonality:</b>	Polyclonal
<b>Immunogen:</b>	Synthetic peptide corresponding to a region within amino acids 309 and 371 of ESE1 (Uniprot ID#P78545)
<b>Formulation:</b>	1XPBS, 20% Glycerol (pH7). 0.01% Thimerosal was added as a preservative.
<b>Concentration:</b>	lot specific
<b>Purification:</b>	Purified by antigen-affinity chromatography.
<b>Conjugation:</b>	Unconjugated
<b>Storage:</b>	Store at -20°C as received.
<b>Stability:</b>	Stable for 12 months from date of receipt.
<b>Predicted Protein Size:</b>	41 kDa
<b>Gene Name:</b>	E74 like ETS transcription factor 3
<b>Database Link:</b>	<a href="#">NP_001107781</a> <a href="#">Entrez Gene 13710 Mouse</a> <a href="#">Entrez Gene 1999 Human</a> <a href="#">P78545</a>
<b>Synonyms:</b>	EPR-1; ERT; ESE-1; ESX
<b>Note:</b>	Seq homology of immunogen across species: Mouse (85%)
<b>Protein Families:</b>	Transcription Factors

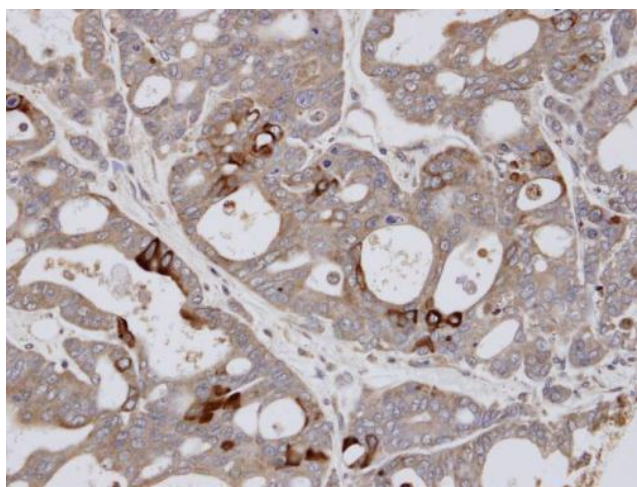


[View online »](#)

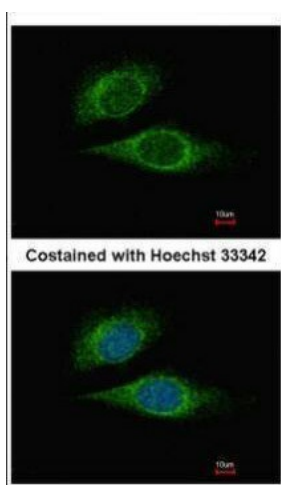
## Product images:



Sample (30 ug of whole cell lysate). A: A431. 10% SDS PAGE. TA308783 diluted at 1:1000.



Immunohistochemical analysis of paraffin-embedded NCI-N87 xenograft, using ESE1 (TA308783) antibody at 1:100 dilution.



Immunofluorescence analysis of methanol-fixed HeLa, using ESE1 (TA308783) antibody at 1:500 dilution.