

## Product datasheet for **TA308782**

### **TOM1L1 Rabbit Polyclonal Antibody**

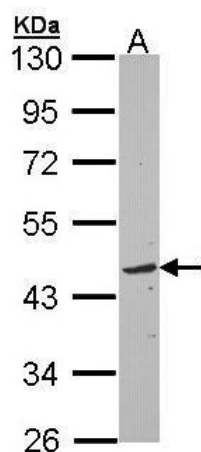
#### **Product data:**

Product Type:	Primary Antibodies
Applications:	IF, WB
Recommended Dilution:	ICC/IF:1:100-1:1000; WB:1:500-1:3000
Reactivity:	Human
Host:	Rabbit
Isotype:	IgG
Clonality:	Polyclonal
Immunogen:	Synthetic peptide corresponding to a region within amino acids 413 and 476 of TOM1L1 (Uniprot ID#O75674)
Formulation:	1XPBS, 10% Glycerol (pH7). 0.01% Thimerosal was added as a preservative.
Concentration:	lot specific
Purification:	Purified by antigen-affinity chromatography.
Conjugation:	Unconjugated
Storage:	Store at -20°C as received.
Stability:	Stable for 12 months from date of receipt.
Predicted Protein Size:	53 kDa
Gene Name:	target of myb1 like 1 membrane trafficking protein
Database Link:	<a href="#">NP_005477</a> <a href="#">Entrez Gene 10040 Human</a> <a href="#">O75674</a>
Synonyms:	KNS-CL.3; OK; SRCASM

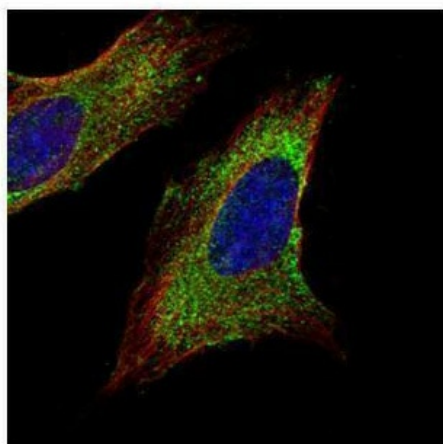


[View online »](#)

## Product images:



Sample (30 ug of whole cell lysate). A: Raji. 10% SDS PAGE. TA308782 diluted at 1:3000.



Confocal immunofluorescence analysis (Olympus FV10i) of methanol-fixed HeLa, using TOM1L1 (TA308782) antibody (Green) at 1:500 dilution. Alpha-tubulin filaments were labeled with anti-alpha tubulin antibody (Red) at 1:2000.