

Product datasheet for **TA308778**

IL1RA (IL1RN) Rabbit Polyclonal Antibody

Product data:

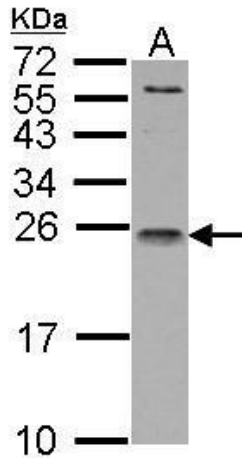
Product Type:	Primary Antibodies
Applications:	IF, IHC, WB
Recommended Dilution:	ICC/IF:1:100-1:1000; IHC:1:100-1:1000; WB:1:500-1:3000
Reactivity:	Human
Host:	Rabbit
Isotype:	IgG
Clonality:	Polyclonal
Immunogen:	Recombinant fragment corresponding to a region within amino acids 1 and 177 of IL1ra antagonist (Uniprot ID#P18510)
Formulation:	1XPBS, 20% Glycerol (pH7). 0.025% ProClin 300 was added as a preservative.
Concentration:	lot specific
Purification:	Purified by antigen-affinity chromatography.
Conjugation:	Unconjugated
Storage:	Store at -20°C as received.
Stability:	Stable for 12 months from date of receipt.
Predicted Protein Size:	20 kDa
Gene Name:	interleukin 1 receptor antagonist
Database Link:	NP_000568 Entrez Gene 3557 Human P18510
Background:	The protein encoded by this gene is a member of the interleukin 1 cytokine family. This protein inhibits the activities of interleukin 1, alpha (IL1A) and interleukin 1, beta (IL1B), and modulates a variety of interleukin 1 related immune and inflammatory responses. This gene and five other closely related cytokine genes form a gene cluster spanning approximately 400 kb on chromosome 2. A polymorphism of this gene is reported to be associated with increased risk of osteoporotic fractures and gastric cancer. Four alternatively spliced transcript variants encoding distinct isoforms have been reported. [provided by RefSeq]
Synonyms:	DIRA; ICIL-1RA; IL-1ra; IL-1ra3; IL-1RN; IL1F3; IL1RA; IRAP; MVCD4



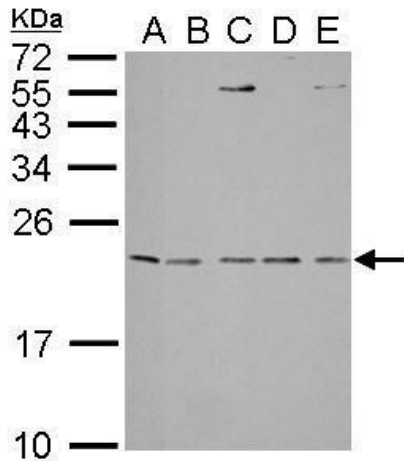
[View online »](#)

Protein Families: Druggable Genome, Secreted Protein

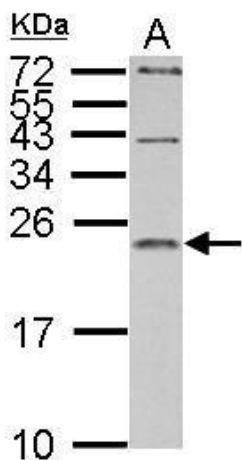
Product images:



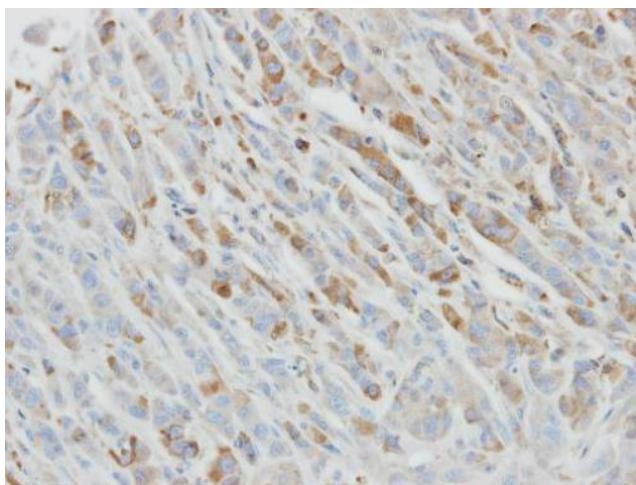
IL1 Receptor antagonist antibody detects IL1RN protein by Western blot analysis. A. 30 ug Raji whole cell lysate/extract. 15 % SDS-PAGE. IL1 Receptor antagonist antibody (TA308778) dilution: 1:1000



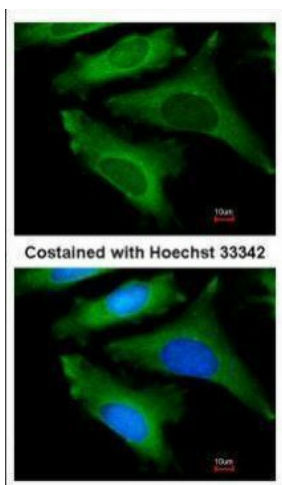
IL1 Receptor antagonist antibody detects IL1RN protein by Western blot analysis. A. 30 ug Neuro2A whole lysate/extract. B. 30 ug C8D30 whole cell lysate/extract. C. 30 ug NIH-3T3 whole cell lysate/extract. D. 30 ug Raw264.7 whole cell lysate/extract. E. 3



IL1 Receptor antagonist antibody detects IL1RN protein by Western blot analysis. A. 30 ug PC-12 whole cell lysate/extract. 15 % SDS-PAGE. IL1 Receptor antagonist antibody (TA308778) dilution: 1:1000



Immunohistochemical analysis of paraffin-embedded PC3 xenograft, using IL1 Receptor antagonist (TA308778) antibody at 1:500 dilution.



Immunofluorescence analysis of methanol-fixed HeLa, using IL1ra antagonist (TA308778) antibody at 1:200 dilution.