

Product datasheet for **TA308777**

Collagen III (COL3A1) Rabbit Polyclonal Antibody

Product data:

Product Type:	Primary Antibodies
Applications:	IF, IHC, WB
Recommended Dilution:	ICC/IF:1:100-1:1000; IHC:1:100-1:1000; WB:1:500-1:3000
Reactivity:	Human (Predicted: Bovine, Chicken, Rat, X. tropicalis)
Host:	Rabbit
Isotype:	IgG
Clonality:	Polyclonal
Immunogen:	Recombinant protein fragment contain a sequence corresponding to a region within amino acids 1247 and 1389 of Collagen III alpha1
Formulation:	1XPBS, 20% Glycerol (pH7). 0.025% ProClin 300 was added as a preservative.
Concentration:	lot specific
Purification:	Purified by antigen-affinity chromatography.
Conjugation:	Unconjugated
Storage:	Store at -20°C as received.
Stability:	Stable for 12 months from date of receipt.
Predicted Protein Size:	139 kDa
Gene Name:	collagen type III alpha 1 chain
Database Link:	NP_000081 Entrez Gene 84032 Rat Entrez Gene 1281 Human P02461
Background:	This gene encodes the pro-alpha1 chains of type III collagen, a fibrillar collagen that is found in extensible connective tissues such as skin, lung, uterus, intestine and the vascular system, frequently in association with type I collagen. Mutations in this gene are associated with Ehlers-Danlos syndrome types IV, and with aortic and arterial aneurysms. Two transcripts, resulting from the use of alternate polyadenylation signals, have been identified for this gene. [provided by R. Dalglish]
Synonyms:	EDS4A



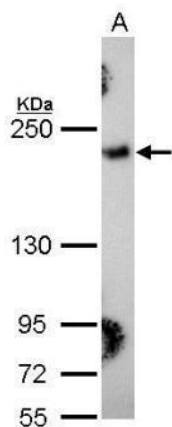
[View online »](#)

Note: Seq homology of immunogen across species: Chicken (86%), Rat (92%), Bovine (93%), Xenopus tropicalis (81%)

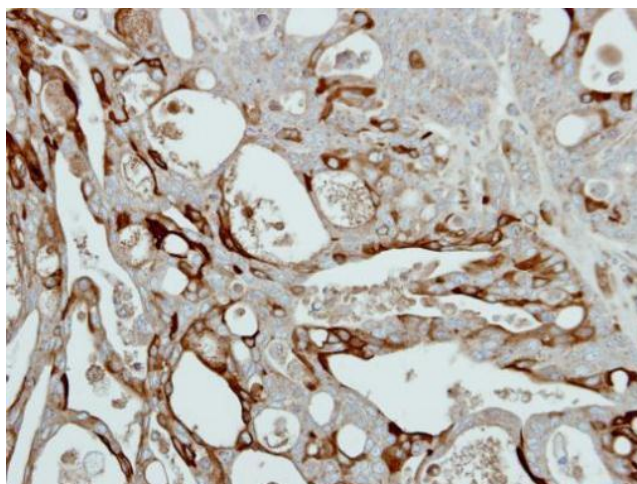
Protein Families: Druggable Genome

Protein Pathways: ECM-receptor interaction, Focal adhesion

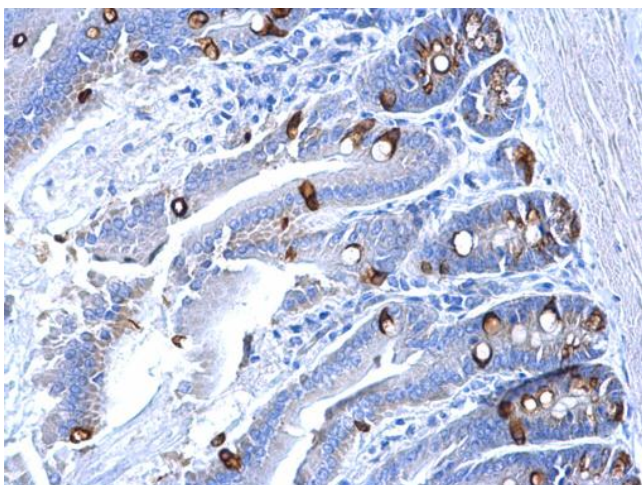
Product images:



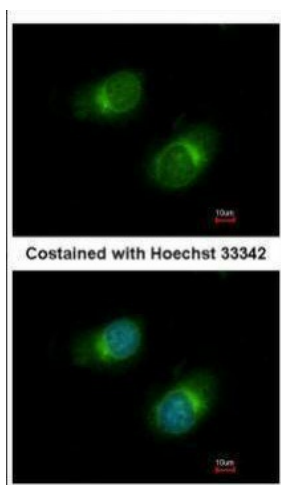
Sample (30 ug of whole cell lysate). A: HeLa. 5% SDS PAGE. TA308777 diluted at 1:1000.



Immunohistochemical analysis of paraffin-embedded NCIN87 xenograft, using Collagen III alpha1 (TA308777) antibody at 1:500 dilution.



Collagen III alpha1 antibody [C2C3-2], C-term detects Collagen III alpha1 protein at secreted on mouse intestine by immunohistochemical analysis. Sample: Paraffin-embedded mouse intestine. Collagen III alpha1 antibody [C2C3-2], C-term (TA308777) dilution:



Immunofluorescence analysis of methanol-fixed HeLa, using COL3A1 (TA308777) antibody at 1:50 dilution.