

Product datasheet for **TA308772**

CED6 (GULP1) Rabbit Polyclonal Antibody

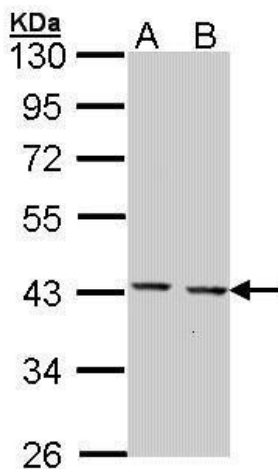
Product data:

Product Type:	Primary Antibodies
Applications:	WB
Recommended Dilution:	WB:1:500-1:3000
Reactivity:	Human, Mouse (Predicted: Rat)
Host:	Rabbit
Isotype:	IgG
Clonality:	Polyclonal
Immunogen:	Synthetic peptide corresponding to a region within amino acids 241 and 304 of GULP1 (Uniprot ID#Q9UBP9)
Formulation:	0.1M Tris, 0.1M Glycine, 10% Glycerol (pH7). 0.01% Thimerosal was added as a preservative.
Concentration:	lot specific
Purification:	Purified by antigen-affinity chromatography.
Conjugation:	Unconjugated
Storage:	Store at -20°C as received.
Stability:	Stable for 12 months from date of receipt.
Predicted Protein Size:	35 kDa
Gene Name:	GULP, engulfment adaptor PTB domain containing 1
Database Link:	NP_057399 Entrez Gene 70676 Mouse Entrez Gene 314543 Rat Entrez Gene 51454 Human Q9UBP9
Background:	The prompt clearance of cells undergoing apoptosis is critical during embryonic development, normal tissue turnover, inflammation, and autoimmunity. CED6 is an evolutionarily conserved adaptor protein required for efficient engulfment of apoptotic cells by phagocytes. [supplied by OMIM]
Synonyms:	CED-6; CED6; GULP
Note:	Seq homology of immunogen across species: Rat (100%)
Protein Families:	Druggable Genome

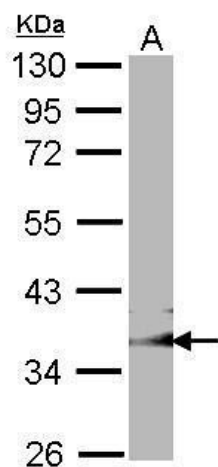


[View online »](#)

Product images:



Sample (30 ug of whole cell lysate). A: Hep G2. B: Molt-4. 10% SDS PAGE. TA308772 diluted at 1:1000.



Sample (30 ug of whole cell lysate). A: NIH-3T3. 10% SDS PAGE. GULP1 antibody. TA308772 diluted at 1:1000.