

Product datasheet for **TA308771**

TFE3 Rabbit Polyclonal Antibody

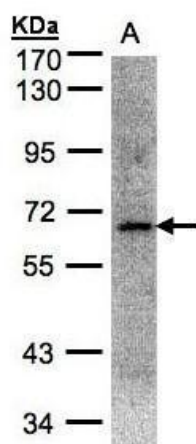
Product data:

Product Type:	Primary Antibodies
Applications:	IF, IHC, WB
Recommended Dilution:	ICC/IF:1:100-1:1000; IHC:1:100-1:1000; WB:1:500-1:3000
Reactivity:	Human (Predicted: Bovine, Rhesus Monkey)
Host:	Rabbit
Isotype:	IgG
Clonality:	Polyclonal
Immunogen:	Synthetic peptide corresponding to a region within amino acids 1 and 45 of TFE3 (Uniprot ID#P19532)
Formulation:	0.1M Tris, 0.1M Glycine, 10% Glycerol (pH7). 0.01% Thimerosal was added as a preservative.
Concentration:	lot specific
Purification:	Purified by antigen-affinity chromatography.
Conjugation:	Unconjugated
Storage:	Store at -20°C as received.
Stability:	Stable for 12 months from date of receipt.
Predicted Protein Size:	62 kDa
Gene Name:	transcription factor binding to IGHM enhancer 3
Database Link:	NP_006512 Entrez Gene 7030 Human P19532
Background:	TFE3, a member of the helix-loop-helix family of transcription factors, binds to the mu-E3 motif of the immunoglobulin heavy-chain enhancer and is expressed in many cell types (Henthorn et al., 1991 [PubMed 1685140]). [supplied by OMIM]
Synonyms:	bHLHe33; RCCP2; RCCX1; TFEA
Note:	Seq homology of immunogen across species: Rhesus Monkey (92%), Bovine (93%)
Protein Families:	Druggable Genome, Transcription Factors

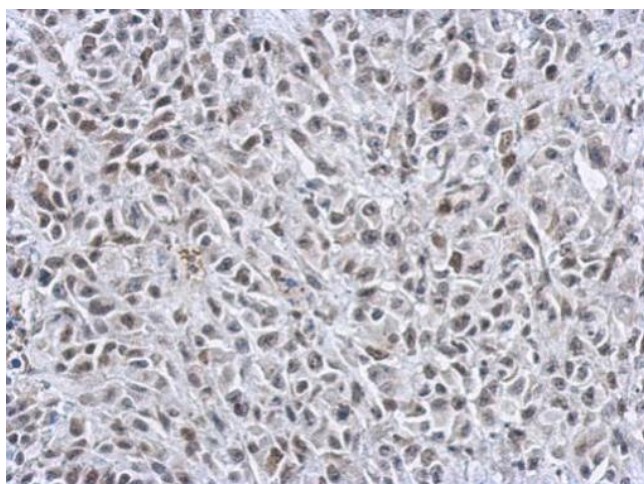


[View online »](#)

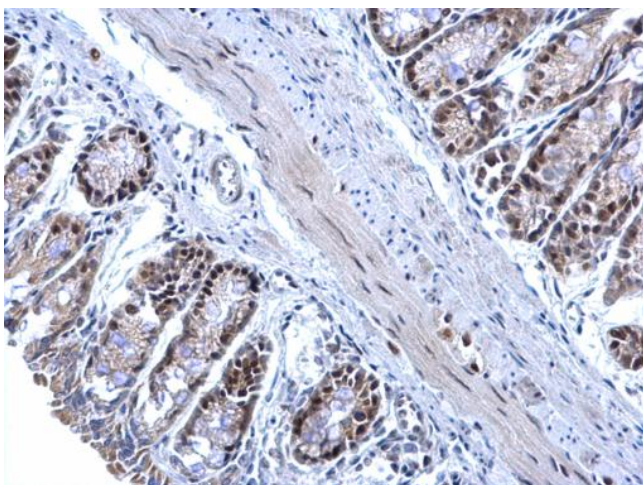
Product images:



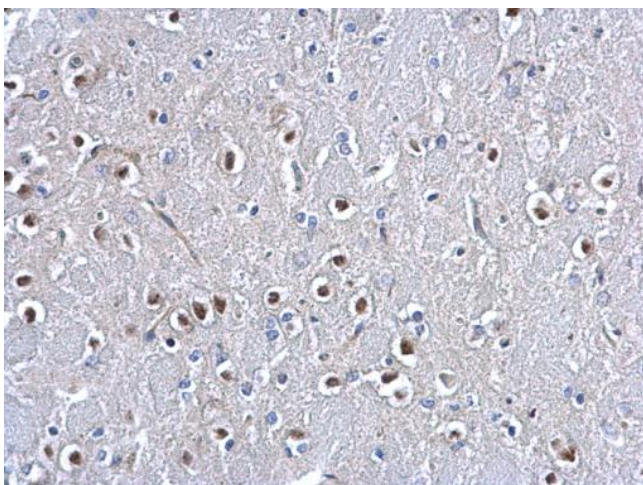
Sample (30 ug whole cell lysate). A: Hep G2. 7.5% SDS PAGE. TA308771 diluted at 1:1000



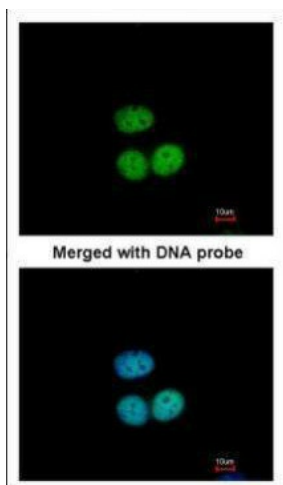
Immunohistochemical analysis of paraffin-embedded HBL435 xenograft, using TFE3 (TA308771) antibody at 1:200 dilution.



TFE3 antibody [N1], N-term detects TFE3 protein at nucleus on mouse colon by immunohistochemical analysis. Sample: Paraffin-embedded mouse colon. TFE3 antibody [N1], N-term (TA308771) dilution: 1:500.



TFE3 antibody [N1], N-term detects TFE3 protein at nucleus on rat middle brain by immunohistochemical analysis. Sample: Paraffin-embedded rat middle brain. TFE3 antibody [N1], N-term (TA308771) dilution: 1:500.



Immunofluorescence analysis of paraformaldehyde-fixed HeLa, using Transcription factor E3 (TA308771) antibody at 1:200 dilution.