

Product datasheet for **TA308770**

Endothelin 1 (EDN1) Rabbit Polyclonal Antibody

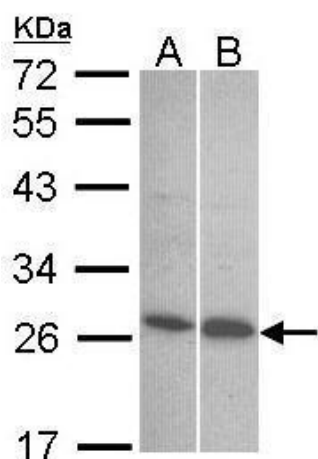
Product data:

Product Type:	Primary Antibodies
Applications:	IF, WB
Recommended Dilution:	ICC/IF:1:100-1:1000; WB:1:500-1:3000
Reactivity:	Human
Host:	Rabbit
Isotype:	IgG
Clonality:	Polyclonal
Immunogen:	Synthetic peptide corresponding to a region within amino acids 141 and 212 of Endothelin 1 (Uniprot ID#P05305)
Formulation:	1XPBS, 20% Glycerol (pH7). 0.025% ProClin 300 was added as a preservative.
Concentration:	lot specific
Purification:	Purified by antigen-affinity chromatography.
Conjugation:	Unconjugated
Storage:	Store at -20°C as received.
Stability:	Stable for 12 months from date of receipt.
Predicted Protein Size:	24 kDa
Gene Name:	endothelin 1
Database Link:	NP_001946 Entrez Gene 1906 Human P05305
Synonyms:	ARCND3; ET1; HDLCQ7; PPET1; QME
Protein Families:	Druggable Genome, Secreted Protein
Protein Pathways:	Melanogenesis

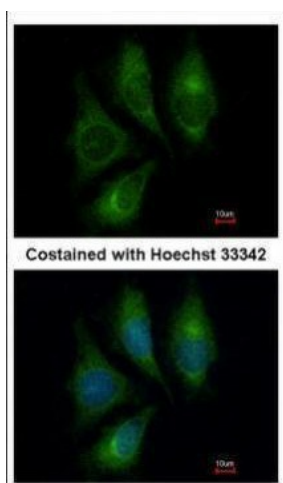


[View online »](#)

Product images:



Sample (30 ug of whole cell lysate). A: 293T. B: Hep G2. 12% SDS PAGE. TA308770 diluted at 1:1000.



Immunofluorescence analysis of methanol-fixed HeLa, using Endothelin 1 (TA308770) antibody at 1:200 dilution.