

Product datasheet for **TA308767**

Mesothelin (MSLN) Rabbit Polyclonal Antibody

Product data:

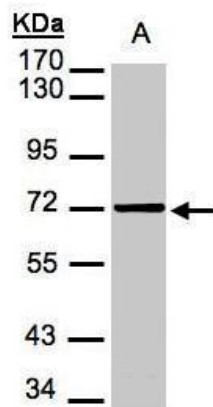
Product Type:	Primary Antibodies
Applications:	IHC, WB
Recommended Dilution:	IHC:1:100-1:1000; WB:1:500-1:3000
Reactivity:	Human
Host:	Rabbit
Isotype:	IgG
Clonality:	Polyclonal
Immunogen:	Recombinant fragment corresponding to a region within amino acids 44 and 468 of Mesothelin (Uniprot ID#Q13421)
Formulation:	0.1M Tris, 0.1M Glycine, 10% Glycerol (pH7). 0.01% Thimerosal was added as a preservative.
Concentration:	lot specific
Purification:	Purified by antigen-affinity chromatography.
Conjugation:	Unconjugated
Storage:	Store at -20°C as received.
Stability:	Stable for 12 months from date of receipt.
Predicted Protein Size:	69 kDa
Gene Name:	mesothelin
Database Link:	NP_037536 Entrez Gene 10232 Human Q13421
Background:	An antibody that reacts with ovarian cancers and mesotheliomas was used to isolate a cell surface antigen named mesothelin. Although the function of mesothelin is unknown, it may play a role in cellular adhesion and is present on mesothelium, mesotheliomas, and ovarian cancers. This gene encodes a preproprotein that is cleaved into two products, megakaryocyte potentiating factor and mesothelin. Alternative splicing results in multiple transcript variants. [provided by RefSeq]
Synonyms:	MPF; SMRP



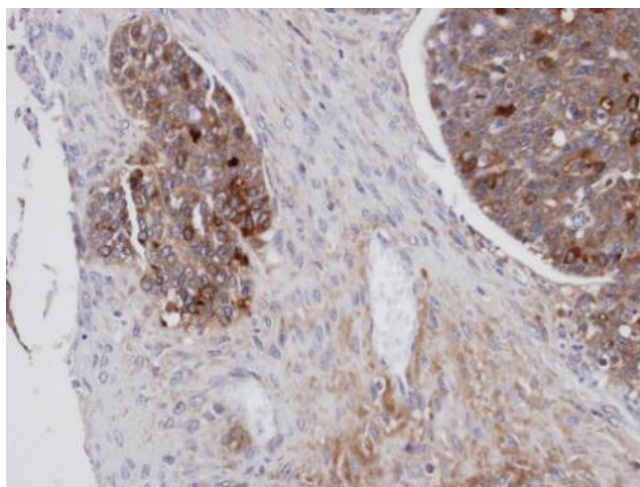
[View online »](#)

Protein Families: Druggable Genome, Secreted Protein, Transmembrane

Product images:



Sample (30 ug of whole cell lysate). A:293T. 7.5% SDS PAGE. TA308767 diluted at 1:1000



Immunohistochemical analysis of paraffin-embedded serous OVCA, using MSLN (TA308767) antibody at 1:100 dilution.