

Product datasheet for **TA308765**

SENP2 Rabbit Polyclonal Antibody

Product data:

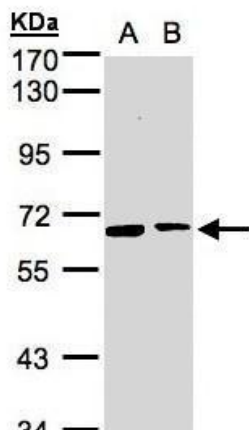
Product Type:	Primary Antibodies
Applications:	IF, IHC, WB
Recommended Dilution:	ICC/IF:1:100-1:1000; IHC:1:100-1:1000; WB:1:500-1:3000
Reactivity:	Human (Predicted: Bovine)
Host:	Rabbit
Isotype:	IgG
Clonality:	Polyclonal
Immunogen:	Synthetic peptide corresponding to a region within amino acids 1 and 62 of SENP2 (Uniprot ID#Q9HC62)
Formulation:	1XPBS, 1% BSA, 20% Glycerol (pH7). 0.01% Thimerosal was added as a preservative.
Concentration:	lot specific
Purification:	Purified by antigen-affinity chromatography.
Conjugation:	Unconjugated
Storage:	Store at -20°C as received.
Stability:	Stable for 12 months from date of receipt.
Predicted Protein Size:	68 kDa
Gene Name:	SUMO1/sentrin/SMT3 specific peptidase 2
Database Link:	NP_067640 Entrez Gene 59343 Human Q9HC62
Background:	SUMO1 (UBL1; MIM 601912) is a small ubiquitin-like protein that can be covalently conjugated to other proteins. SENP2 is one of a group of enzymes that process newly synthesized SUMO1 into the conjugatable form and catalyze the deconjugation of SUMO1-containing species. [supplied by OMIM]
Synonyms:	AXAM2; SMT3IP2
Note:	Seq homology of immunogen across species: Bovine (88%)
Protein Families:	Druggable Genome, Protease



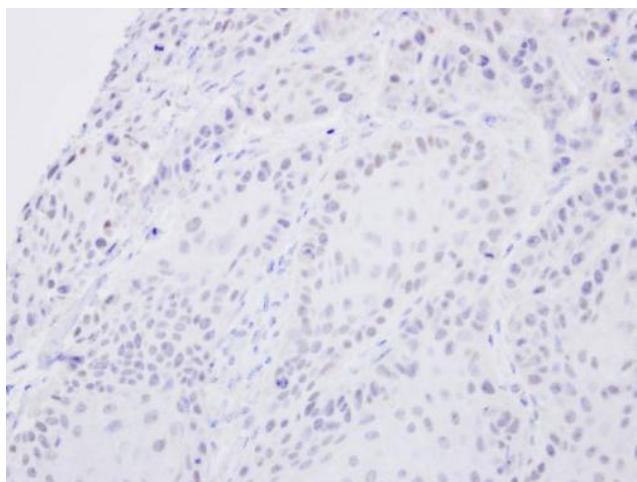
[View online »](#)

Protein Pathways: Wnt signaling pathway

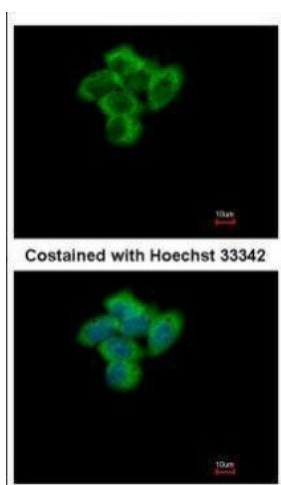
Product images:



Sample (30 ug whole cell lysate). A:293T.
B:MOLT4. 7.5% SDS PAGE. TA308765 diluted at
1:1000



Immunohistochemical analysis of paraffin-
embedded Cal27 xenograft, using SENP2
(TA308765) antibody at 1:500 dilution.



Immunofluorescence analysis of paraformaldehyde-fixed A431, using SENP2 (TA308765) antibody at 1:500 dilution.