

Product datasheet for **TA308764**

E2F1 Rabbit Polyclonal Antibody

Product data:

Product Type:	Primary Antibodies
Applications:	IF, WB
Recommended Dilution:	ICC/IF:1:100-1:1000; WB:1:500-1:3000
Reactivity:	Human
Host:	Rabbit
Isotype:	IgG
Clonality:	Polyclonal
Immunogen:	Recombinant fragment corresponding to a region within amino acids 133 and 362 of E2F1 (Uniprot ID#Q01094)
Formulation:	0.1M Tris, 0.1M Glycine, 10% Glycerol (pH7). 0.01% Thimerosal was added as a preservative.
Concentration:	lot specific
Purification:	Purified by antigen-affinity chromatography.
Conjugation:	Unconjugated
Storage:	Store at -20°C as received.
Stability:	Stable for 12 months from date of receipt.
Predicted Protein Size:	47 kDa
Gene Name:	E2F transcription factor 1
Database Link:	NP_005216 Entrez Gene 1869 Human Q01094



[View online »](#)

Background:

The protein encoded by this gene is a member of the E2F family of transcription factors. The E2F family plays a crucial role in the control of cell cycle and action of tumor suppressor proteins and is also a target of the transforming proteins of small DNA tumor viruses. The E2F proteins contain several evolutionally conserved domains found in most members of the family. These domains include a DNA binding domain, a dimerization domain which determines interaction with the differentiation regulated transcription factor proteins (DP), a transactivation domain enriched in acidic amino acids, and a tumor suppressor protein association domain which is embedded within the transactivation domain. This protein and another 2 members, E2F2 and E2F3, have an additional cyclin binding domain. This protein binds preferentially to retinoblastoma protein pRB in a cell-cycle dependent manner. It can mediate both cell proliferation and p53-dependent/independent apoptosis. [provided by RefSeq]

Synonyms:

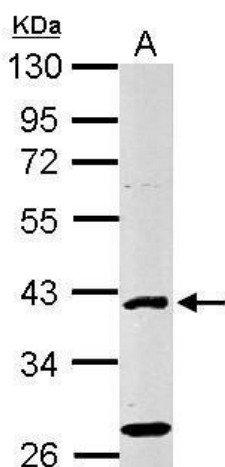
E2F-1; RBAP1; RBBP3; RBP3

Protein Families:

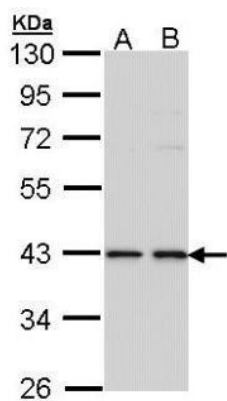
Druggable Genome, Transcription Factors

Protein Pathways:

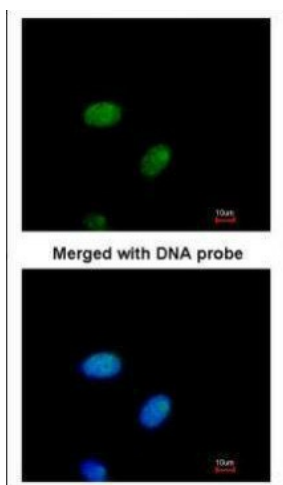
Bladder cancer, Cell cycle, Chronic myeloid leukemia, Glioma, Melanoma, Non-small cell lung cancer, Pancreatic cancer, Pathways in cancer, Prostate cancer, Small cell lung cancer

Product images:

Sample (30 ug of whole cell lysate). A: NIH-3T3.
10% SDS PAGE. TA308764 diluted at 1:500.



Sample (30 ug of whole cell lysate). A: A431. B: H1299. 10% SDS PAGE. TA308764 diluted at 1:1000.



Immunofluorescence analysis of paraformaldehyde-fixed HeLa, using E2F1 (TA308764) antibody at 1:200 dilution.